

XMLE100U1D43 has not been replaced. Please contact your customer care center for more information.

ⓘ Discontinued

### Main

Range of product	OsiSense XM
Product or component type	Electronic pressure sensors
Pressure sensor type	Electronic pressure sensor
Pressure sensor size	1450.38 psi (100 bar)
Pressure sensor name	XMLE
Controlled fluid	Fresh water (32...176 °F (0...80 °C)) Air (5...176 °F (-15...80 °C)) Corrosive fluid (5...176 °F (-15...80 °C)) Hydraulic oil (5...176 °F (-15...80 °C))
Fluid connection type	1/4" - 18 NPT (male)
Type of output signal	Discrete
Discrete output type	Solid state PNP, 1 NC
Electrical connection	Male connector M12
Adjustable range of switching point on rising pressure	101.53...1450.38 psi (7...100 bar)
Adjustable range of switching point on falling pressure	72.52...1421.37 psi (5...98 bar)
[Us] rated supply voltage	24 V DC, voltage limits: 11...33 V
Diameter	1.57 in (40 mm)

### Complementary

Enclosure material	Anodised aluminium
Type of installation	Control circuit
Operating position	Any position
Materials in contact with fluid	Stainless steel type AISI 303
Pressure switch type of operation	Regulation between 2 thresholds
Possible differential minimum at low setting	29.01 psi (2 bar)
Possible differential maximum at high setting	29.01 psi (2 bar)
Maximum permissible accidental pressure	2900.75 psi (200 bar)
Maximum permissible pressure - per cycle	1450.38 psi (100 bar)

Destruction pressure	4351.13 psi (300 bar)
Drift of the sensitivity	+/- 0.015 % of measuring range/°C
Drift of the zero point	+/- 0.03 % of measuring range/°C
Protection type	Overload protection Reverse polarity Short-circuit
Scale type	Adjustable differential
Local display	Without
Mechanical durability	>= 10000000 cycles
Measurement accuracy	+/- 0.3 % of the measuring range
Product weight	0.71 lb(US) (0.32 kg)

## Environment

IP degree of protection	IP65
Vibration resistance	35 gn (f = 60...2000 Hz) 5 gn (f = 25...200 Hz)
Protective treatment	TC
Shock resistance	50 gn
Standards	CE EN 50081 EN 50082
Product certifications	CSA UL
Ambient air temperature for operation	5...176 °F (-15...80 °C)

## Ordering and shipping details

Category	21551 - XMLE,XMLF,XMLG PRESSURE SENSORS
Discount Schedule	DS2
GTIN	003389110758740
Nbr. of units in pkg.	1
Package weight(Lbs)	0.7099999999999996
Returnability	N
Country of origin	CH

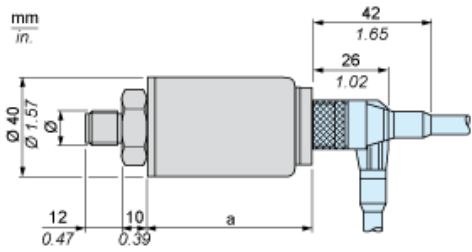
## Offer Sustainability

RoHS (date code: YYWW)	Compliant - since 0627 - Schneider Electric declaration of conformity <a href="#">Schneider Electric declaration of conformity</a>
------------------------	---

## Contractual warranty

Warranty period	18 months
-----------------	-----------

Dimensions



Ø : 1/2 NPT

Dimensions in mm

a
75

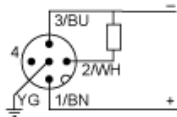
Dimensions in in.

a
2.95

---

Wiring Diagram

---

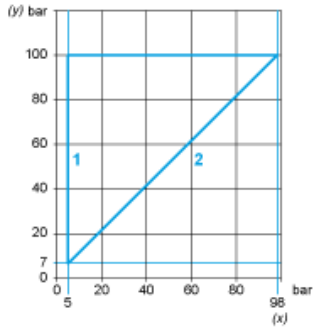


- (BU) Blue
- (BN) Brown
- (WH) White
- (YG) Yellow Green

---

Operating Curves

---



- 1 : Maximum differential
- 2 : Minimum differential
- (y) Rising pressure
- (x) Falling pressure