

Product data sheet

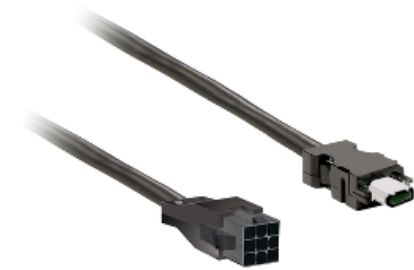
Characteristics

VW3M5D1AR50

power cable 5m shielded 4x 0,82mm², BCH2 leads connection

Product availability : Stock - Normally stocked in distribution facility

Price* : 65.00 USD



Main

Range of product	Lexium 28
Product or component type	Power cable
Accessory / separate part type	Preassembled power cordset
Accessory / separate part category	Connection accessory
Product compatibility	Servo motor BCH2 at 50 W (40 mm) (without brake) Servo motor BCH2 at 100 W (40 mm) (without brake) Servo motor BCH2 at 200 W (60 mm) (without brake) Servo motor BCH2 at 400 W (60 mm) (without brake) Servo motor BCH2 at 400 W (80 mm) (without brake) Servo motor BCH2 at 750 W (80 mm) (without brake)
Accessory / separate part destination	Between servo motor and servo drive
Range compatibility	Lexium 28
Cable length	16.4 ft (5 m)

Complementary

Electrical connection	Free end (servo drive side) Connector Molex 4-pin (servo motor side)
AWG gauge	4 x AWG 18
Product weight	0.99 lb(US) (0.45 kg)

Ordering and shipping details

Category	18264 - LEXIUM 23/28 ACCESSORIES
Discount Schedule	PC51
GTIN	00785901981640
Nbr. of units in pkg.	1
Package weight(Lbs)	1.5600000000000001
Returnability	Y
Country of origin	TN

Offer Sustainability

RoHS (date code: YYWW)	Compliant
------------------------	-----------

California proposition 65	WARNING: This product can expose you to chemicals including:
- - - - - Substance 1	Lead and lead compounds, which is known to the State of California to cause cancer and birth defects or other reproductive harm.
- - - - - More information	For more information go to www.p65warnings.ca.gov
