

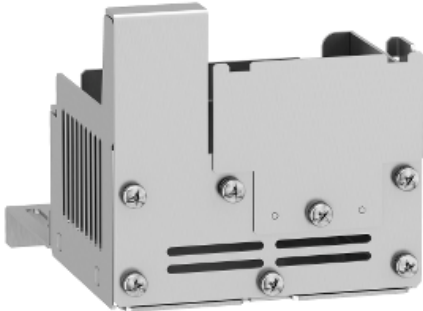
Product data sheet

Characteristics

VW3A95812

kit for UL type 1 conformity - mounted under variable speed drive

Product availability : Stock - Normally stocked in distribution facility



Main

| | |
|---------------------------------------|---|
| Range of product | Altivar |
| Accessory / separate part category | Mounting and fixing accessories |
| Accessory / separate part type | Kit for UL type 1 conformity |
| Product compatibility | Variable speed drive ATV320...C at 1.1 kW, 200...240 V single phase Variable speed drive ATV320...C at 1.5 kW, 200...240 V single phase Variable speed drive ATV320...C at 2.2 kW, 200...240 V single phase Variable speed drive ATV320...C at 0.37 kW, 380...500 V three phase Variable speed drive ATV320...C at 0.55 kW, 380...500 V three phase Variable speed drive ATV320...C at 0.75 kW, 380...500 V three phase Variable speed drive ATV320...C at 1.1 kW, 380...500 V three phase Variable speed drive ATV320...C at 1.5 kW, 380...500 V three phase Variable speed drive ATV320...C at 0.75 kW, 525...600 V three phase Variable speed drive ATV320...C at 1.5 kW, 525...600 V three phase |
| Accessory / separate part destination | Variable speed drive |

Complementary

| | |
|---------------------|------------------------|
| Range compatibility | Altivar Machine ATV320 |
| Kit composition | Mechanical device |
| Mounting location | Underside of drive |

Environment

| | |
|-----------|-----------|
| Standards | UL Type 1 |
|-----------|-----------|

Ordering and shipping details

| | |
|-----------------------|------------------------------------|
| Category | 22154 - ATV312 / ATV32 ACCESSORIES |
| Discount Schedule | CP4B |
| GTIN | 00785901092599 |
| Nbr. of units in pkg. | 1 |
| Package weight(Lbs) | 2 |
| Returnability | Y |
| Country of origin | ID |

Offer Sustainability

| | |
|---------------------------|---|
| RoHS (date code: YYWW) | Compliant - since 1616 - Schneider Electric declaration of conformity Schneider Electric declaration of conformity |
| California proposition 65 | WARNING: This product can expose you to chemicals including: |
| ----- Substance 1 | Lead and lead compounds, which is known to the State of California to cause cancer and birth defects or other reproductive harm. |
| ----- Substance 2 | Bisphenol A (BPA), which is known to the State of California to cause birth defects or other reproductive harm. |
| ----- More information | For more information go to www.p65warnings.ca.gov |