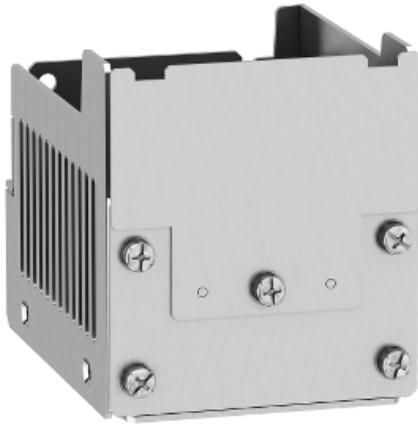


Product availability : Stock - Normally stocked in distribution facility



### Main

Range of product	Altivar
Accessory / separate part category	Mounting and fixing accessories
Accessory / separate part type	Kit for UL type 1 conformity
Product compatibility	Variable speed drive ATV320...C at 0.18 kW, 200...240 V single phase Variable speed drive ATV320...C at 0.37 kW, 200...240 V single phase Variable speed drive ATV320...C at 0.55 kW, 200...240 V single phase Variable speed drive ATV320...C at 0.75 kW, 200...240 V single phase
Accessory / separate part destination	Variable speed drive

### Complementary

Range compatibility	Altivar Machine ATV320
Kit composition	Mechanical device
Mounting location	Underside of drive

### Environment

Standards	UL Type 1
-----------	-----------

### Ordering and shipping details

Category	22154 - ATV312 / ATV32 ACCESSORIES
Discount Schedule	CP4B
GTIN	00785901092247
Nbr. of units in pkg.	1
Package weight(Lbs)	1.48
Returnability	Y
Country of origin	ID

### Offer Sustainability

RoHS (date code: YYWW)	Compliant - since 1616 - Schneider Electric declaration of conformity <a href="#">Schneider Electric declaration of conformity</a>
California proposition 65	WARNING: This product can expose you to chemicals including:

---

----- Substance 1	Lead and lead compounds, which is known to the State of California to cause cancer and birth defects or other reproductive harm.
----- Substance 2	Bisphenol A (BPA), which is known to the State of California to cause birth defects or other reproductive harm.
----- More information	For more information go to <a href="http://www.p65warnings.ca.gov">www.p65warnings.ca.gov</a>

---