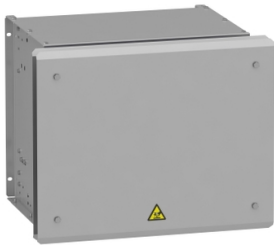


Product data sheet

Specifications



braking resistor, Altivar, 28Ohms,
5.1kW, IP23

VW3A7752

Product availability: Non-Stock - Not normally stocked in
distribution facility

Price*: 1,349.47 USD

Main

| | |
|--------------------------------|--|
| Range Compatibility | Altivar Process ATV900 Altivar Machine ATV340 |
| Product Or Component Type | Braking resistor |
| Ohmic Value | 28 Ohm |
| [Ue] Rated Operational Voltage | 24 V DC 250 V AC |

Complementary

| | |
|-------------------------|---|
| Product Compatibility | Variable speed drive ATV930 wall mount 11 kW 380...480 V severe cycle Variable speed drive ATV930 wall mount 15 kW 380...480 V severe cycle Variable speed drive ATV930 wall mount 4 kW 200...240 V severe cycle Variable speed drive ATV950 wall mount 11 kW 380...480 V severe cycle Variable speed drive ATV950 wall mount 15 kW 380...480 V severe cycle Variable speed drive ATV340 7.5 kW 380...480 V severe cycle Variable speed drive ATV340 11 kW 380...480 V severe cycle Variable speed drive ATV930 15 kW 500...690 V severe cycle Variable speed drive ATV930 18.5 kW 500...690 V severe cycle Variable speed drive ATV930 20 hp 600 V severe cycle Variable speed drive ATV930 25 hp 600 V severe cycle |
| Duty Cycle | Severe cycle (heavy duty) <54 s braking with 100 % braking torque for a 120 s cycle Severe cycle (heavy duty) <6 s braking with 165 % braking torque for a 120 s cycle |
| Average Power Available | 5.1 kW 122 °F (50 °C) |
| Electrical Connection | terminal <= 2.5 mm² / AWG 12 temperature control switch M6 bar wire drive |
| Protection Type | Thermal protection via drive or temperature control switch 120 °C |
| Width | 21.26 in (540 mm) |
| Height | 19.09 in (485 mm) |
| Depth | 25.59 in (650 mm) |
| Net Weight | 59.52 lb(US) (27 kg) |

Environment

| | |
|---------------------------------------|----------------------------|
| Ip Degree Of Protection | IP23 |
| Ambient Air Temperature For Storage | -13...158 °F (-25...70 °C) |
| Ambient Air Temperature For Operation | 32...122 °F (0...50 °C) |

Ordering and shipping details

| | |
|-------------------|--------------|
| Category | US1CP4E22209 |
| Discount Schedule | CP4E |

Price is "List Price" and may be subject to a trade discount – check with your local distributor or retailer for actual price.

Disclaimer: This documentation is not intended as a substitute for and is not to be used for determining suitability or reliability of these products for specific user applications

| | |
|-------------------|---------------|
| Gtin | 3606480802447 |
| Returnability | No |
| Country Of Origin | US |

Packing Units

| | |
|------------------------------|--------------------------|
| Unit Type Of Package 1 | PCE |
| Number Of Units In Package 1 | 1 |
| Package 1 Height | 22.83 in (58.000 cm) |
| Package 1 Width | 22.83 in (58.000 cm) |
| Package 1 Length | 27.95 in (71.000 cm) |
| Package 1 Weight | 52.69 lb(US) (23.900 kg) |

Sustainability

Green Premium™ label is Schneider Electric's commitment to delivering products with best-in-class environmental performance. Green Premium promises compliance with the latest regulations, transparency on environmental impacts, as well as circular and low-CO₂ products.

Guide to assessing product sustainability is a white paper that clarifies global eco-label standards and how to interpret environmental declarations.

[Learn more about Green Premium >](#)

[Guide to assess a product's sustainability >](#)

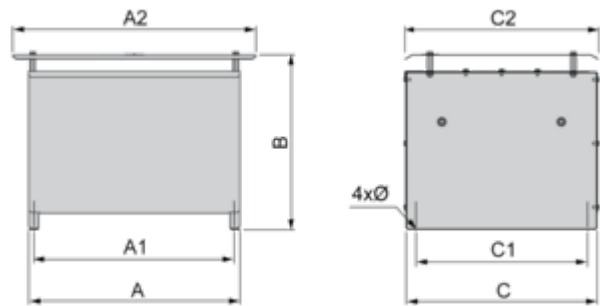
Well-being performance

| | | |
|---------------------------|---|-----|
| ✓ | Reach Free Of Svhc | |
| ✓ | Toxic Heavy Metal Free | |
| ✓ | Mercury Free | |
| ✓ | Rohs Exemption Information | Yes |
| | | |
| Reach Regulation | REACH Declaration | |
| | | |
| Eu Rohs Directive | Pro-active compliance (Product out of EU RoHS legal scope) EU RoHS Declaration | |
| | | |
| China Rohs Regulation | China RoHS declaration | |
| | | |
| California Proposition 65 | WARNING: This product can expose you to chemicals including: Lead and lead compounds, which is known to the State of California to cause cancer and birth defects or other reproductive harm. For more information go to www.P65Warnings.ca.gov | |

Dimensions Drawings

Dimensions

Right Side and Front View



Dimensions in mm

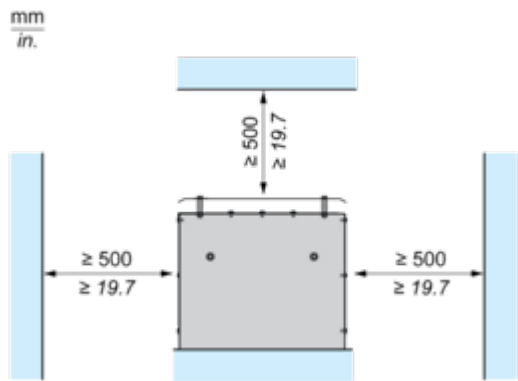
| A | B | C | A1 | C1 | A2 | C2 | Ø |
|-----|-----|-----|-----|-----|-----|-----|--------|
| 530 | 485 | 485 | 510 | 380 | 650 | 540 | 9 x 12 |

Dimensions in in.

| A | B | C | A1 | C1 | A2 | C2 | Ø |
|-------|-------|-------|-------|-------|-------|-------|-------------|
| 20.87 | 19.09 | 19.09 | 20.08 | 14.96 | 25.59 | 21.26 | 0.35 x 0.47 |

Mounting and Clearance

Clearances



Connections and Schema

Recommended Schema

1 Braking Resistor

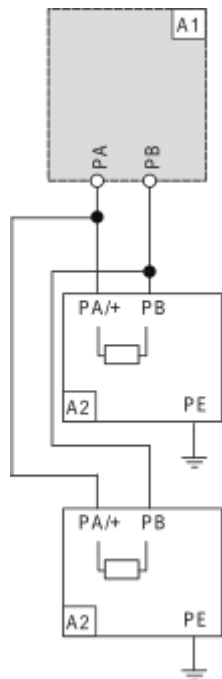


A1 : Drive or external braking unit

A2 : Braking resistor

PA, PB : Bus DC

2 Braking Resistors



A1 : Drive or external braking unit

A2 : Braking resistor

PA, PB : Bus DC