

Product data sheet

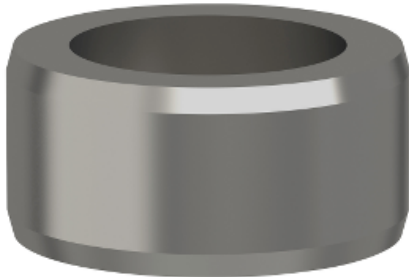
Characteristics

VW33MF020LD01

locating dowels 3,8xd8/d5,5 - 20 pieces

Product availability : Non-Stock - Not normally stocked in distribution facility

Price* : 135.73 USD



Main

Range of product	Lexium linear motion
Product or component type	Adaptor
Accessory / separate part category	Maintenance accessories

Complementary

Product compatibility	PAS 41 linear axis , outer dimension : 40 x 40 mm CAS 41 linear axis , outer dimension : 40 x 40 mm PAS 42 linear axis , outer dimension : 60 x 60 mm CAS 42 linear axis , outer dimension : 60 x 60 mm CAS 30 cantilever axis , outer dimension : 70 x 28 mm CAS 31 cantilever axis , outer dimension : 80 x 30 mm
Range compatibility	Lexium PAS Lexium CAS

Ordering and shipping details

Category	18233 - LINEAR MOTION ACCESSORIES
Discount Schedule	PC57
GTIN	003606485219981
Nbr. of units in pkg.	1
Package weight(Lbs)	0.10000000000000001
Returnability	N
Country of origin	DE

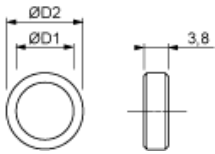
Offer Sustainability

RoHS (date code: YYWW)	Compliant - since 1001 - Schneider Electric declaration of conformity Schneider Electric declaration of conformity
California proposition 65	WARNING: This product can expose you to chemicals including:
----- Substance 1	Lead and lead compounds, which is known to the State of California to cause cancer and birth defects or other reproductive harm.
----- More information	For more information go to www.p65warnings.ca.gov

Contractual warranty

Warranty period	18 months
-----------------	-----------

Dimensions



Dimensions in mm

ØD1	ØD2
5.5	8 h6

Dimensions in in.

ØD1	ØD2
0.22	0.31 h6