

Product data sheet

Specifications



standard analog input kit, Modicon STB, 4 to 20mA, 8I, 15 bits with sign

STBACI1400K

Product availability: Stock - Normally stocked in distribution facility

Main

Range Of Product	Modicon STB distributed I/O solution
Product Or Component Type	Standard analog input kit
Kit Composition	STBXTS1100, 6-terminal screw type connector STBXTS2100, 6-terminal spring clamp connector STBACI1400 module STBXBA2000 base
Analogue Input Type	Current 0...20 mA Current 4...20 mA
Analogue Input Number	8
Analogue Input Resolution	15 bits + sign
Type Of Filter	Single low pass input filter 985 Hz

Complementary

Absolute Maximum Input	25 mA/50 V DC
Cold Swapping	Yes
Hot Swapping Fallback	Yes for standard NIMs
Fallback Status	State 0 basic NIMs User configurable standard NIMs
Data Format	EN 61131-2 IEC 61131-2
Update Time	22 ms
Integral Linearity	+/- 0.08 %FS
Differential Linearity	Monotonic
Input Impedance	<= 250 Ohm
Maximum Supply Current For Sensors	100 mA per input channels
Absolute Accuracy Error	+/- 0.4 % of full scale per °C
Temperature Drift	+/-0.005 %/°C
Insulation Between Channels And Logic Bus	1500 V for 1 minute
Insulation Between Channels And Sensor Bus	30 V
Addressing Requirement	16 input words
Product Compatibility	Power distribution module STBPDT3100/3105 Mounting base STBXBA2000
[Us] Rated Supply Voltage	24 V DC
Supply	Power distribution module

Price is "List Price" and may be subject to a trade discount – check with your local distributor or retailer for actual price.

Disclaimer: This documentation is not intended as a substitute for and is not to be used for determining suitability or reliability of these products for specific user applications

Current Consumption	90 mA 5 V DC logic bus
Marking	CE
Overvoltage Category	II
Status Led	1 LED (Green) module status (RDY)
Depth	2.76 in (70 mm)
Height	0.72 in (18.4 mm)
Width	5.05 in (128.3 mm)

Environment

Product Certifications	FM Class 1 Division 2 CSA UL ATEX Cat 3G C-tick
Pollution Degree	2 IEC 60664-1
Operating Altitude	<= 6561.68 ft (2000 m)
Ip Degree Of Protection	IP20 conforming to IEC 61131-2 class 1
Ambient Air Temperature For Operation	-13...158 °F (-25...70 °C)
Ambient Air Temperature For Operation	- 13...158 °F
Ambient Air Temperature For Storage	-40...185 °F (-40...85 °C) without derating
Ambient Air Temperature For Storage	-40...185 °F without derating
Relative Humidity	95 % 140 °F (60 °C) without condensation
Vibration Resistance	+/-0.35 mm 10...58 Hz 3 gn 58...150 Hz 35 x 7.5 mm symmetrical DIN rail 5 gn 58...150 Hz 35 x 15 mm symmetrical DIN rail
Shock Resistance	30 gn 11 ms IEC 88 reference 2-27

Ordering and shipping details

Category	US1PC3218215
Discount Schedule	PC32
Gtin	3595863948400
Returnability	Yes
Country Of Origin	ID

Packing Units

Unit Type Of Package 1	PCE
Number Of Units In Package 1	1
Package 1 Height	0.98 in (2.5 cm)
Package 1 Width	3.15 in (8.0 cm)
Package 1 Length	5.12 in (13.0 cm)
Package 1 Weight	5.19 oz (147.0 g)
Unit Type Of Package 2	S02
Number Of Units In Package 2	28
Package 2 Height	5.91 in (15 cm)

Package 2 Width	11.81 in (30 cm)
Package 2 Length	15.75 in (40 cm)
Package 2 Weight	10.01 lb(US) (4.542 kg)
Unit Type Of Package 3	P06
Number Of Units In Package 3	448
Package 3 Height	29.53 in (75.0 cm)
Package 3 Width	23.62 in (60.0 cm)
Package 3 Length	31.50 in (80.0 cm)
Package 3 Weight	286.60 lb(US) (130 kg)

Contractual warranty

Warranty	18 months
----------	-----------

Sustainability

Green Premium™ label is Schneider Electric's commitment to delivering products with best-in-class environmental performance. Green Premium promises compliance with the latest regulations, transparency on environmental impacts, as well as circular and low-CO₂ products.

Guide to assessing product sustainability is a white paper that clarifies global eco-label standards and how to interpret environmental declarations.

[Learn more about Green Premium >](#)

[Guide to assess a product's sustainability >](#)

Well-being performance



Mercury Free



Rohs Exemption Information

Yes

Reach Regulation

[REACH Declaration](#)

Eu Rohs Directive

Pro-active compliance (Product out of EU RoHS legal scope)

China Rohs Regulation

[China RoHS declaration](#)

Weee

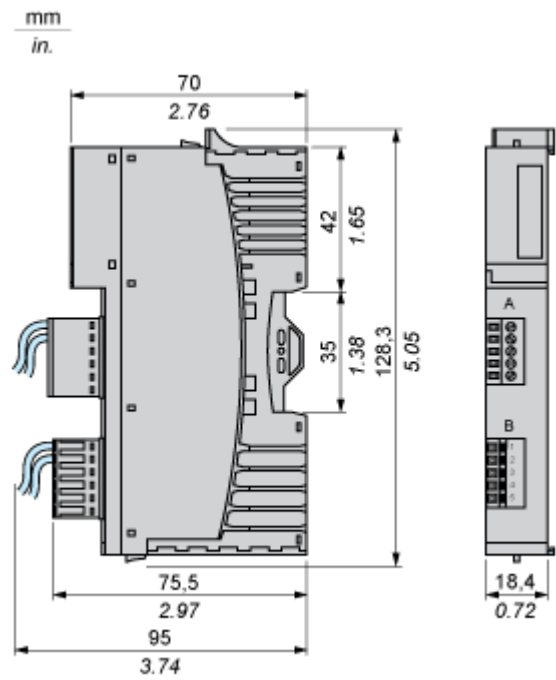
The product must be disposed on European Union markets following specific waste collection and never end up in rubbish bins.

California Proposition 65

WARNING: This product can expose you to chemicals including: Lead and lead compounds, which is known to the State of California to cause cancer and birth defects or other reproductive harm. For more information go to www.P65Warnings.ca.gov

Dimensions Drawings

Dimensions

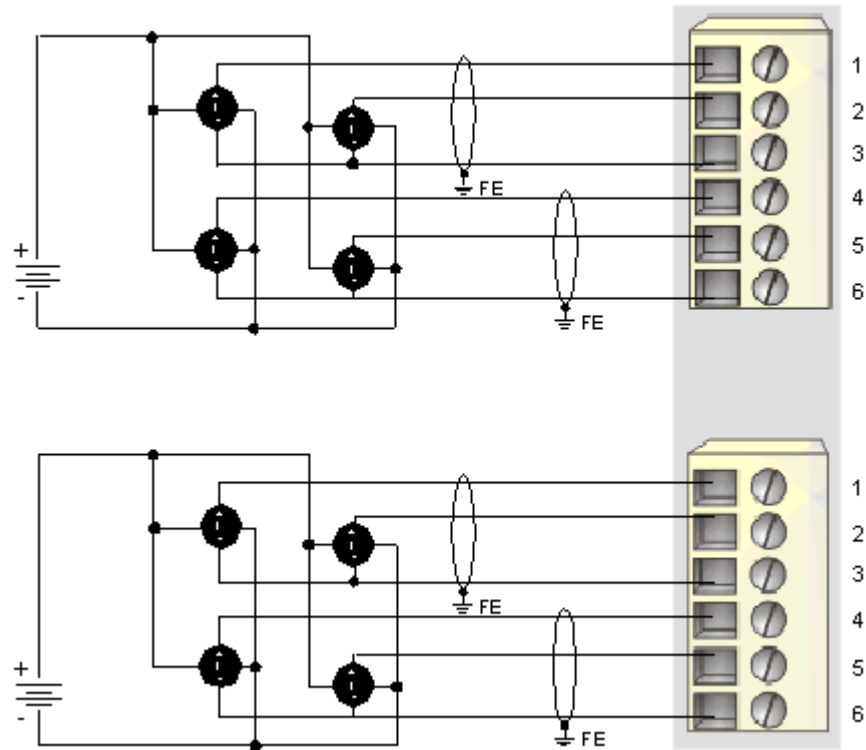


Connections and Schema

Wiring Diagram

Example

8 isolated analog sensors, external 24 VDC power supply



Pin	Top Connections	Bottom Connections
1	current in 1	current in 5
2	current in 2	current in 6
3	return	return
4	current in 3	current in 7
5	current in 4	current in 8
6	return	return