

# Product data sheet

## Characteristics

# SH31401P01F1100

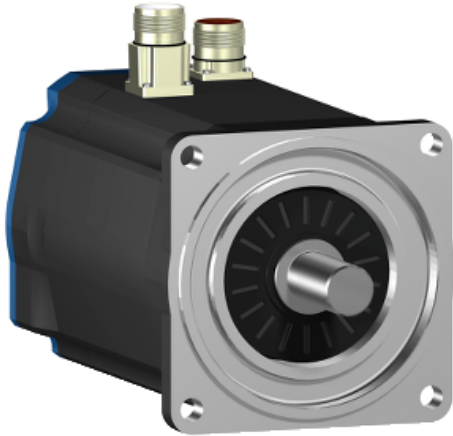
servo motor SH3 140

11,1Nm,nokey,single,brake,str.conn,IP65/IP65,4k RPM

Product availability : Non-Stock - Not normally stocked in distribution facility



Price\*\* : 2,557.58 USD



### Main

Range compatibility	PacDrive 3
Product or component type	Servo motor
Device short name	SH3....P

### Complementary

Maximum mechanical speed	4000 rpm
[Us] rated supply voltage	115...480 V
Phase	Three phase
Continuous stall current	7.8 A
Continuous stall torque	98.23 lbf.in (11.1 N.m) at 115...480 V three phase
Peak stall torque	238.94 lbf.in (27 N.m) at 115...480 V three phase
Nominal output power	860 W at 115 V three phase 1670 W at 230 V three phase 2890 W at 400 V three phase 3170 W at 480 V three phase
Nominal torque	93.81 lbf.in (10.6 N.m) at 230 V three phase 81.42 lbf.in (9.2 N.m) at 400 V three phase 96.9 lbf.in (10.95 N.m) at 115 V three phase 74.34 lbf.in (8.4 N.m) at 480 V three phase
Nominal speed	750 rpm at 115 V three phase 1500 rpm at 230 V three phase 3000 rpm at 400 V three phase 3600 rpm at 480 V three phase
Maximum current Irms	20.8 A
Shaft end	Smooth shaft
Shaft diameter	0.94 in (24 mm)
Shaft length	1.97 in (50 mm)

Key width	0.31 in (8 mm)
IP degree of protection	IP65 (motor) conforming to EN/IEC 60034-5 IP65 (shaft bushing) conforming to EN/IEC 60034-5
Encoder type	Absolute single turn SinCos Hiperface
Speed feedback resolution	128 periods
Holding brake	With
Holding torque	203.54 lbf.in (23 N.m)
Mounting support	International standard flange
Motor flange size	5.51 in (140 mm)
Electrical connection	Straight connector
Torque constant	1.43 N.m/A at 248 °F (120 °C)
Back emf constant	100 V/krpm at 68 °F (20 °C)
Number of motor poles	5
Rotor inertia	9.21 kg.cm <sup>2</sup>
Stator resistance	1.41 Ohm
Stator inductance	23.72 mH
Maximum radial force Fr	1930 N at 1000 rpm 1530 N at 2000 rpm 1340 N at 3000 rpm
Maximum axial force Fa	300 N
Type of cooling	Natural convection
Length	10.06 in (255.5 mm)
Centring collar diameter	3.74 in (95 mm)
Centring collar depth	0.14 in (3.5 mm)
Number of mounting holes	4
Mounting holes diameter	0.43 in (11 mm)
Circle diameter of the mounting holes	6.5 in (165 mm)
Product weight	28.66 lb(US) (13 kg)

## Ordering and shipping details

Category	18359 - PACDRIVE3 SERVO MOTORS
Discount Schedule	PC52
Nbr. of units in pkg.	1
Package weight(Lbs)	26.18
Returnability	N

## Offer Sustainability

Sustainable offer status	Green Premium product
RoHS (date code: YYWW)	Compliant - since 1036 - Schneider Electric declaration of conformity <a href="#">Schneider Electric declaration of conformity</a>
REACH	Reference not containing SVHC above the threshold <a href="#">Reference not containing SVHC above the threshold</a>
Product environmental profile	Available
Product end of life instructions	Need no specific recycling operations
California proposition 65	WARNING: This product can expose you to chemicals including:
- - - - - Substance 1	Lead and lead compounds, which is known to the State of California to cause cancer and birth defects or other reproductive harm.
- - - - - More information	For more information go to <a href="http://www.p65warnings.ca.gov">www.p65warnings.ca.gov</a>

## Contractual warranty

Warranty period	18 months
-----------------	-----------