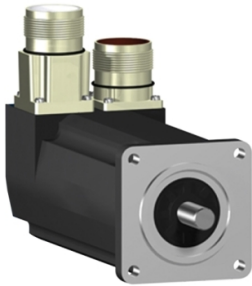


Product data sheet

Specifications



servo motor SH3 055
0,71Nm,key,single,brake,str.conn,IP
65/IP65,9k RPM

SH30552P11F1100

Discontinued on: Jun 30, 2023

Discontinued

Product availability: Non-Stock - Not normally stocked in distribution facility

Main

Range Compatibility	PacDrive 3
Product Or Component Type	Servo motor
Device Short Name	SH3.....P

Complementary

Maximum Mechanical Speed	9000 rpm
[Us] Rated Supply Voltage	115...480 V
Phase	Three phase
Continuous Stall Current	1.2 A
Continuous Stall Torque	6.28 lbf.in (0.71 N.m) 115...480 V three phase
Continuous Power	530 W
Peak Stall Torque	22.13 lbf.in (2.5 N.m) 115...480 V three phase
Nominal Output Power	160 W 115 V single phase 310 W 230 V single phase 600 W 400 V three phase 670 W 480 V three phase
Nominal Torque	6.82 lbf.in (0.77 N.m) 115 V single phase 6.64 lbf.in (0.75 N.m) 230 V single phase 5.58 lbf.in (0.63 N.m) 400 V three phase 5.58 lbf.in (0.63 N.m) 480 V three phase
Nominal Speed	4000 rpm 230 V single phase 9000 rpm 480 V three phase 2000 rpm 115 V single phase 8000 rpm 400 V three phase
Maximum Current Irms	4.8 A
Shaft End	Parallel key
Shaft Diameter	0.35 in (9 mm)
Shaft Length	0.79 in (20 mm)
Key Width	0.12 in (3 mm)
Ip Degree Of Protection	IP65 motor: conforming to EN/IEC 60034-5 IP65 shaft bushing: conforming to EN/IEC 60034-5
Encoder Type	Absolute single turn SinCos Hiperface
Speed Feedback Resolution	128 periods
Holding Brake	With

Price is "List Price" and may be subject to a trade discount – check with your local distributor or retailer for actual price.

Disclaimer: This documentation is not intended as a substitute for and is not to be used for determining suitability or reliability of these products for specific user applications

Holding Torque	7.08 lbf.in (0.8 N.m)
Mounting Support	International standard flange
Motor Flange Size	2.17 in (55 mm)
Electrical Connection	Straight connector
Torque Constant	0.59 N.m/A 248 °F (120 °C)
Back Emf Constant	40 V/krpm 68 °F (20 °C)
Number Of Motor Poles	3
Rotor Inertia	0.117 kg.cm²
Stator Resistance	17.4 Ohm
Stator Inductance	53.54 mH
Maximum Radial Force Fr	370 N 1000 rpm 290 N 2000 rpm 260 N 3000 rpm 230 N 4000 rpm 220 N 5000 rpm 200 N 6000 rpm 190 N 7000 rpm 190 N 8000 rpm
Maximum Axial Force Fa	40 N
Type Of Cooling	Natural convection
Length	7.13 in (181 mm)
Centring Collar Diameter	1.57 in (40 mm)
Centring Collar Depth	0.08 in (2 mm)
Number Of Mounting Holes	4
Mounting Holes Diameter	0.22 in (5.5 mm)
Circle Diameter Of The Mounting Holes	2.48 in (63 mm)
Net Weight	3.53 lb(US) (1.6 kg)

Ordering and shipping details

Category	US1PC5218359
Discount Schedule	PC52
Gtin	3606481971227
Returnability	No
Country Of Origin	US

Packing Units

Unit Type Of Package 1	PCE
Number Of Units In Package 1	1
Package 1 Weight	3.30 lb(US) (1.497 kg)

Contractual warranty

Warranty	18 months
----------	-----------

Sustainability



Green Premium™ label is Schneider Electric’s commitment to delivering products with best-in-class environmental performance. Green Premium promises compliance with the latest regulations, transparency on environmental impacts, as well as circular and low-CO₂ products.

Guide to assessing product sustainability is a white paper that clarifies global eco-label standards and how to interpret environmental declarations.

[Learn more about Green Premium >](#)

[Guide to assess a product’s sustainability >](#)



Transparency RoHS/REACH

Well-being performance

✓	Mercury Free	
✓	Rohs Exemption Information	Yes
✓	Pvc Free	

Certifications & Standards

Reach Regulation	REACH Declaration
Eu Rohs Directive	Pro-active compliance (Product out of EU RoHS legal scope)
China Rohs Regulation	China RoHS declaration
Environmental Disclosure	Product Environmental Profile
Weee	The product must be disposed on European Union markets following specific waste collection and never end up in rubbish bins.
Circularity Profile	No need of specific recycling operations
California Proposition 65	WARNING: This product can expose you to chemicals including: Lead and lead compounds, which is known to the State of California to cause cancer and birth defects or other reproductive harm. For more information go to www.P65Warnings.ca.gov