

Product data sheet

Characteristics

SH30552P11A1000

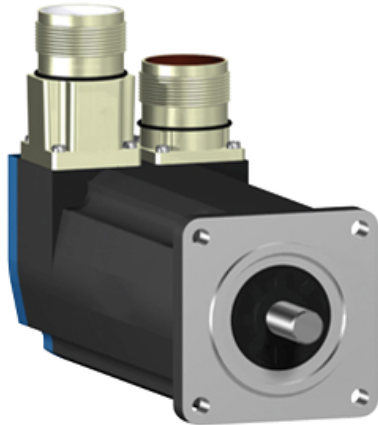
servo motor SH3 055

0,8Nm,key,single,nobrake,str.conn,IP54/IP65,9k RPM

Product availability : Non-Stock - Not normally stocked in distribution facility



Price** : 1,130.81 USD



Main

Range compatibility	PacDrive 3
Product or component type	Servo motor
Device short name	SH3.....P

Complementary

Maximum mechanical speed	9000 rpm
[Us] rated supply voltage	115...480 V
Phase	Three phase
Continuous stall current	0.6 A
Continuous stall torque	7.08 lbf.in (0.8 N.m) at 115...480 V three phase
Peak stall torque	22.12 lbf.in (2.5 N.m) at 115...480 V three phase
Nominal output power	160 W at 115 V three phase 310 W at 230 V three phase 600 W at 400 V three phase 670 W at 480 V three phase
Nominal torque	6.64 lbf.in (0.75 N.m) at 230 V three phase 6.28 lbf.in (0.71 N.m) at 480 V three phase 6.81 lbf.in (0.77 N.m) at 115 V three phase 6.37 lbf.in (0.72 N.m) at 400 V three phase
Nominal speed	2000 rpm at 115 V three phase 8000 rpm at 400 V three phase 9000 rpm at 480 V three phase 4000 rpm at 230 V three phase
Maximum current Irms	4.8 A
Shaft end	Parallel key
Shaft diameter	0.35 in (9 mm)
Shaft length	0.79 in (20 mm)

Key width	0.12 in (3 mm)
IP degree of protection	IP54 (shaft bushing without shaft seal ring) conforming to EN/IEC 60034-5 IP65 (motor) conforming to EN/IEC 60034-5 IP65 (shaft bushing) conforming to EN/IEC 60034-5
Encoder type	Absolute single turn SinCos Hiperface
Speed feedback resolution	128 periods
Holding brake	Without
Holding torque	7.08 lbf.in (0.8 N.m)
Mounting support	International standard flange
Motor flange size	2.17 in (55 mm)
Electrical connection	Straight connector
Torque constant	0.7 N.m/A at 248 °F (120 °C)
Back emf constant	40 V/krpm at 68 °F (20 °C)
Number of motor poles	3
Rotor inertia	0.096 kg.cm ²
Stator resistance	17.4 Ohm
Stator inductance	53.54 mH
Maximum radial force Fr	190 N at 7000 rpm 190 N at 8000 rpm 200 N at 6000 rpm 220 N at 5000 rpm 230 N at 4000 rpm 260 N at 3000 rpm 290 N at 2000 rpm 370 N at 1000 rpm
Maximum axial force Fa	40 N
Type of cooling	Natural convection
Length	6.08 in (154.4 mm)
Centring collar diameter	1.57 in (40 mm)
Centring collar depth	0.08 in (2 mm)
Number of mounting holes	4
Mounting holes diameter	0.22 in (5.5 mm)
Circle diameter of the mounting holes	2.48 in (63 mm)
Product weight	3.31 lb(US) (1.5 kg)

Ordering and shipping details

Category	18359 - PACDRIVE3 SERVO MOTORS
Discount Schedule	PC52
Nbr. of units in pkg.	1
Package weight(Lbs)	3.3000000000000003
Returnability	N

Offer Sustainability

Sustainable offer status	Green Premium product
RoHS (date code: YYWW)	Compliant - since 1036 - Schneider Electric declaration of conformity Schneider Electric declaration of conformity
REACH	Reference not containing SVHC above the threshold Reference not containing SVHC above the threshold
Product environmental profile	Available
Product end of life instructions	Need no specific recycling operations
California proposition 65	WARNING: This product can expose you to chemicals including:
----- Substance 1	Lead and lead compounds, which is known to the State of California to cause cancer and birth defects or other reproductive harm.
----- More information	For more information go to www.p65warnings.ca.gov

Contractual warranty

Warranty period	18 months
-----------------	-----------
