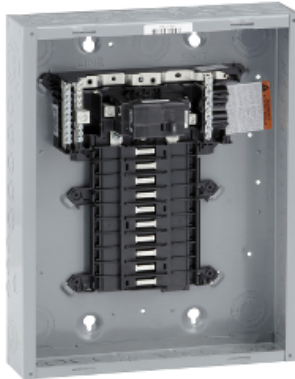


Product availability : Stock - Normally stocked in distribution facility



Price* : 396.00 USD



Main

Product	Load Center
Marketing Trade Name	QO
Load center type	Main breaker
Line Rated Current	100 A
Number of spaces	20
Short Circuit Current Rating	22 kA
Maximum Number of Single Pole Circuits	20
Maximum Number of Tandem Breakers	0
Phase	1 phase
System Voltage	120/240 V AC

Complementary

Wire Size	AWG 6...AWG 1 (aluminium/copper)
Enclosure Rating	NEMA 1 indoor
Cover type	Order separately
Electrical Connection	Lugs
Grounding Bar	Grounding bar (ordered separately)
Electrical connection	Lugs
Wiring configuration	3-wire
Busbar Material	Tin plated copper busbar
Enclosure Material	Welded sheet steel
Cover Finish	Baked enamel grey
Box number	6
Product certifications	UL listed
Height	17.91 in (455 mm)
Width	14.25 in (362 mm)

Ordering and shipping details

Category	00001 - QO 1PH LC,12-42 CKT,NEMA1
Discount Schedule	DE3A
GTIN	00785901847878
Nbr. of units in pkg.	1
Package weight(Lbs)	11.550000000000001
Returnability	Y
Country of origin	US

Offer Sustainability

RoHS (date code: YYWW)	Compliant - since 1248 - Schneider Electric declaration of conformity Schneider Electric declaration of conformity
REACH	Reference not containing SVHC above the threshold Reference not containing SVHC above the threshold
Product end of life instructions	Need no specific recycling operations
California proposition 65	WARNING: This product can expose you to chemicals including:
----- Substance 1	Lead and lead compounds which is known to the State of California to cause cancer and birth defects or other reproductive harm.
----- More information	For more information go to www.p65warnings.ca.gov

Contractual warranty

Warranty period	18 months
-----------------	-----------