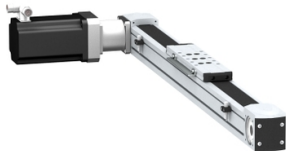


Product data sheet

Specifications



portal axis PAS E - profile size
110x110mm - toothed belt - ball -
stroke 450mm

PAS44E0450

⚠ Discontinued on: Sep 19, 2022

⚠ Discontinued

Main

Range Of Product	Lexium PAS E
Product Or Component Type	Portal axis
Product Specific Application	For 1 direction
Load Position	On carriage
Drive Type	Toothed belt
Type Of Guide	Ball

Complementary

Operating Position	Horizontal
Typical Payload	110.23 lb(US) (50 kg)
Distance Per Revolution	10.39 in (264 mm)
Operating Force	2600 N for Fx 6270 N for Fy 6270 N for Fz
Maximum Speed	6.56 ft/s (2 m/s)
Maximum Acceleration	49.21 ft/s ² (15 m/s ²)
Max. Drive Torque	35.40 lbf.in (4 N.m)
Max. Torque	<44.25 lbf.in (5 N.m) for Mx <97.36 lbf.in (11 N.m) for My <150.46 lbf.in (17 N.m) for Mz
Stroke	17.72 in (450 mm)
Product Weight	81.57 lb(US) (37 kg) at 0 stroke with carriage and motor 9.26 lb(US) (4.2 kg) of carriage 114.42 lb(US) (51.9 kg) total
Repeat Accuracy	+/- 0.05 mm
Profile Dimension	110 x 110 mm
Service Life	30000 km
Associated Module	PLE120 planetary gearbox 5:1 supplied) BMH1401P06A2A servo motor supplied) LXM32.D72N4 servo drive not supplied)

Ordering and shipping details

Gtin	3606485237596
------	---------------

Packing Units

Price is "List Price" and may be subject to a trade discount – check with your local distributor or retailer for actual price.

Disclaimer: This documentation is not intended as a substitute for and is not to be used for determining suitability or reliability of these products for specific user applications

Unit Type Of Package 1	PCE
Number Of Units In Package 1	1
Package 1 Height	10.43 in (26.5 cm)
Package 1 Width	19.21 in (48.8 cm)
Package 1 Length	49.29 in (125.2 cm)
Package 1 Weight	114.40 lb(US) (51.891 kg)

Contractual warranty

Warranty	18 months
----------	-----------

Sustainability





Green Premium™ label is Schneider Electric’s commitment to delivering products with best-in-class environmental performance. Green Premium promises compliance with the latest regulations, transparency on environmental impacts, as well as circular and low-CO₂ products.

Guide to assessing product sustainability is a white paper that clarifies global eco-label standards and how to interpret environmental declarations.

[Learn more about Green Premium >](#)

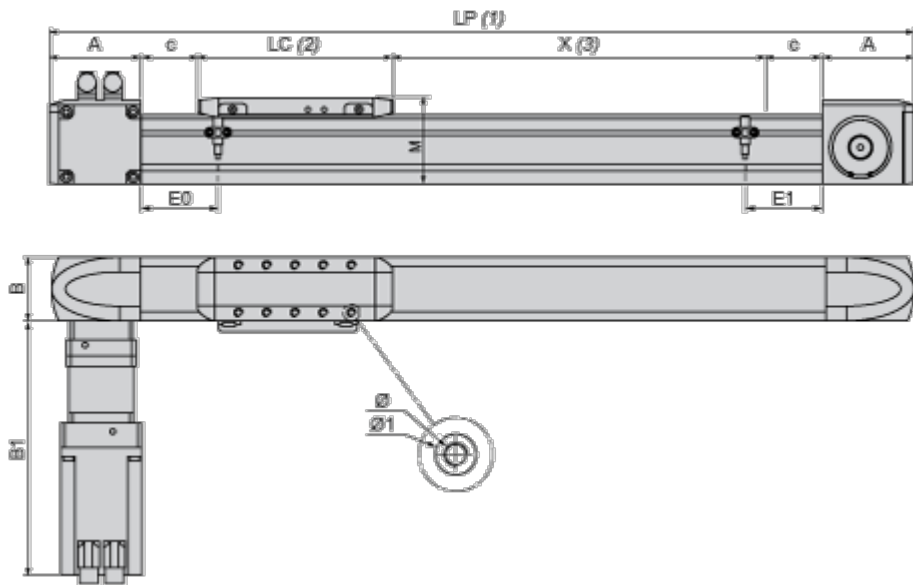
[Guide to assess a product’s sustainability >](#)

Well-being performance

	Reach Free Of Svhc	
	Mercury Free	
	Rohs Exemption Information	Yes
	Pvc Free	
Reach Regulation	REACH Declaration	
Eu Rohs Directive	Pro-active compliance (Product out of EU RoHS legal scope)	
China Rohs Regulation	China RoHS declaration	
Weee	The product must be disposed on European Union markets following specific waste collection and never end up in rubbish bins.	
California Proposition 65	WARNING: This product can expose you to chemicals including: Lead and lead compounds, which is known to the State of California to cause cancer and birth defects or other reproductive harm. For more information go to www.P65Warnings.ca.gov	

Dimensions Drawings

Size Characteristics



- (1) LP : total length of axis
- (2) LC : length of carriage
- (3) X : Stroke, refer to product characteristics.

A	mm	146
	in.	5.75
B	mm	110
	in.	4.33
B1	mm	360
	in.	14.17
c	mm	40
	in.	1.57
E0	mm	110
	in.	4.33
E1	mm	110
	in.	4.33
LC	mm	310
	in.	12.20

LP	mm	= 372 + LC + X
	in.	= 14.64 + LC + X
M	mm	135
	in.	5.31
Ø	mm	M8 X 18
	in.	M8 X 0.70
Ø1	mm	12 ^{H7} X 2.1
	in.	12 ^{H7} X 0.08

Mounting and Clearance

Servo Motor Mounting

Standard servo motor mounting

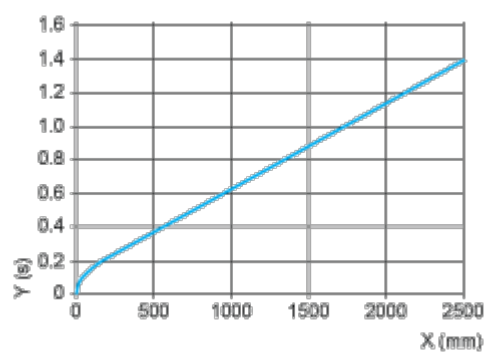


Servo motor mounted on the left



Performance Curves

Axis Positioning Time as a Function of the Stroke



X : Stroke

Y : Positioning time

Technical Description

Forces and Torques Exerted on the Lexium PAS E Portal Axis

