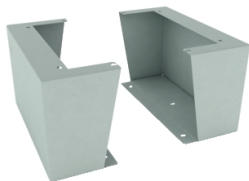


Product data sheet

Specifications



Floor stand kit for Spacial S3D Depth 300 x Height 300 mm Colour RAL7035

NSYWWMK33

⚠ Discontinued on: May 19, 2023

⚠ End-of-service on: Jul 6, 2023

⚠ Discontinued

**Product availability: Non-Stock - Not normally stocked in
distribution facility**

Main

Range	Spacial
Accessory / Separate Part Category	Mounting accessory
Product Or Component Type	Floor-standing kit
Device Application	Multi-purpose
Enclosure Nominal Dimensions	-
Mounting Location	Floor stand
Range Compatibility	Spacial Spacial S3DC
Application Market	Only US market
Device Composition	fixing elements 2 platform leg
Quantity Per Set	Set of 1

Complementary

Material	steel
Color	Gray RAL 7035)
Surface Finish	Epoxy-polyester powder
Fixing Mode	By fixing element M8 - on mounting holes
Permanent Permissible Load	551.16 lb(US) (250 kg)
Height	11.81 in (300 mm)
Width	10.91 in (277 mm)
Depth	8.11 in (206 mm)
Thickness	Side 0.10 in (2.5 mm) Base 0.12 in (3 mm)
Net Weight	24.58 lb(US) (11.15 kg)

Ordering and shipping details

Category	US10ES180034
Discount Schedule	0ES1
Gtin	3606480326608

Price is "List Price" and may be subject to a trade discount – check with your local distributor or retailer for actual price.

Disclaimer: This documentation is not intended as a substitute for and is not to be used for determining suitability or reliability of these products for specific user applications

Returnability	No
Country Of Origin	ES

Packing Units

Unit Type Of Package 1	PCE
Number Of Units In Package 1	1
Package 1 Height	15.55 in (39.5 cm)
Package 1 Width	12.99 in (33.0 cm)
Package 1 Length	14.06 in (35.7 cm)
Package 1 Weight	24.58 lb(US) (11.15 kg)

Contractual warranty

Warranty	18 months
----------	-----------

Sustainability



Green Premium™ label is Schneider Electric’s commitment to delivering products with best-in-class environmental performance. Green Premium promises compliance with the latest regulations, transparency on environmental impacts, as well as circular and low-CO₂ products.

Guide to assessing product sustainability is a white paper that clarifies global eco-label standards and how to interpret environmental declarations.

[Learn more about Green Premium >](#)

[Guide to assess a product’s sustainability >](#)

Well-being performance

 Mercury Free	
 Rohs Exemption Information	Yes
Reach Regulation	REACH Declaration
Eu Rohs Directive	Pro-active compliance (Product out of EU RoHS legal scope) EU RoHS Declaration
China Rohs Regulation	China RoHS declaration Product out of China RoHS scope. Substance declaration for your information.