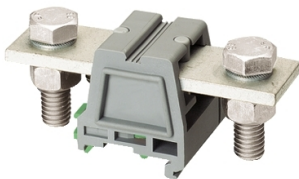


# Product data sheet

Specifications



## SCREW TERMINAL, FEED THROUGH, 2 POINTS, LUG-LUG, 95MM², GREY

NSYTRV952BB

**Discontinued on:** Mar 11, 2022

**Discontinued**

**Product availability: Non-Stock - Not normally stocked in distribution facility**

### Main

Range	Lineryg
Product Name	Lineryg TR
Product Or Component Type	Terminal block
Device Short Name	TRV
Accessory / Separate Part Category	Connection accessory
Terminal Block Type	Passthrough
Terminal Block Level	1
Mounting Mode	Clip-on
Nominal Cross Section	0.15 in² (95 mm²)
Length	4.33 in (110 mm)
Color	Gray
Quantity Per Set	Set of 10

### Complementary

Width	1.57 in (40 mm)
Height	2.20 in (56 mm)
Connections - Terminals	1 x lug upstream M12) 1 x lug downstream M12)
Number Of Connections	2
Connection Position	Sideways
Number Of Measurement Input	0
Cable Cross Section	0.04...0.15 in² (25...95 mm²), solid 0.05...0.15 in² (35...95 mm²), flexible without cable end
Tightening Torque	221.27...265.52 lbf.in (25...30 N.m)
Wire Stripping Length	1.14 in (29 mm)
Tool Type	Connection screwdriver Disconnection screwdriver
[Ue] Rated Operational Voltage	1000 V EN/IEC 60947-7-1 600 V cURus 600 V CSA
Line Rated Current	232 A EN/IEC 60947-7-1 230 A cURus 200 A CSA

Price is "List Price" and may be subject to a trade discount – check with your local distributor or retailer for actual price.

Disclaimer: This documentation is not intended as a substitute for and is not to be used for determining suitability or reliability of these products for specific user applications

Material	Polyamide 6/6: insulating case Copper alloy: connector and screw Copper alloy: commoning link Chromium-nickel steel: spring
Dielectric Loss	0.01 at 1 MHz IEC 60250 0.01 at 1 MHz VDE 0303-T4
Dielectric Constant	3.7 at 1 MHz
Resistivity	10000 MΩ.m IEC 60093 10000 MΩ.m VDE 0303-T30
Surface Resistance	1000 GΩ IEC 60093 1000 GΩ VDE 0303-T30
Creep Resistance	500 CTI (> 400 kV) IEC 60093 500 CTI (> 400 kV) VDE 0303-T30
Flame Retardance	V0 0.03 in (0.8 mm) UL 94
Range Compatibility	Prisma G Prisma P Prisma PH Spacial
Product Compatibility	Spacial enclosures

## Environment

Product Certifications	cURus EAC GL CSA
Dielectric Strength	1000 V IEC 60243-1
Ambient Air Temperature For Operation	-40...266 °F (-40...130 °C) IEC 60216-1 -40...266 °F (-40...130 °C) VDE 0304-T21

## Ordering and shipping details

Category	US10CP521715
Discount Schedule	0CP5
Gtin	3606480532245
Returnability	No
Country Of Origin	CN

## Packing Units

Unit Type Of Package 1	PCE
Number Of Units In Package 1	1

## Contractual warranty

Warranty	18 months
----------	-----------

Sustainability



**Green Premium™ label** is Schneider Electric’s commitment to delivering products with best-in-class environmental performance. Green Premium promises compliance with the latest regulations, transparency on environmental impacts, as well as circular and low-CO<sub>2</sub> products.

**Guide to assessing product sustainability** is a white paper that clarifies global eco-label standards and how to interpret environmental declarations.

[Learn more about Green Premium >](#)

[Guide to assess a product’s sustainability >](#)



RoHS/REACH

Well-being performance

✓	Reach Free Of Svhc	
✓	Toxic Heavy Metal Free	
✓	Mercury Free	
✓	Rohs Exemption Information	Yes
✓	Halogen Free Plastic Parts Product	

Certifications & Standards

Eu Rohs Directive	Compliant <a href="#">EU RoHS Declaration</a>
China Rohs Regulation	<a href="#">China RoHS declaration</a> Pro-active China RoHS declaration (out of China RoHS legal scope)
Weee	The product must be disposed on European Union markets following specific waste collection and never end up in rubbish bins.