

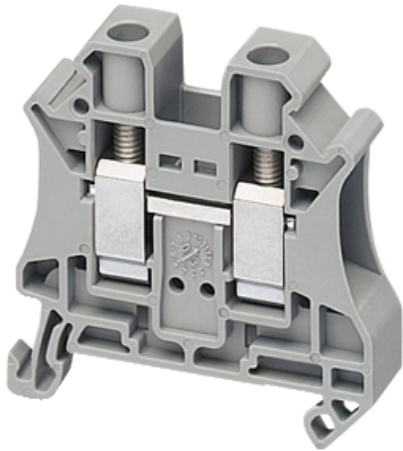
# NSYTRV102

Linery passthrough terminal block - 10mm<sup>2</sup> 57A  
single-level 1x1 screw - grey

Product availability : Stock - Normally stocked in distribution facility



Price\* : 2.70 USD



## Main

Range	Linery
Product name	Linery TR
Product or component type	Terminal block
Device short name	TRV
Accessory / separate part category	Connection accessory
Terminal block type	Passthrough
Terminal block level	1
Mounting mode	Clip-on
Nominal cross section	0.02 in <sup>2</sup> (10 mm <sup>2</sup> )
Length	1.88 in (47.7 mm)
Colour	Grey
Quantity per set	Set of 50

## Complementary

Width	0.4 in (10.2 mm)
Height	1.87 in (47.5 mm)
Connections - terminals	1 x screw terminal : upstream (M4) 1 x screw terminal : downstream (M4)
Number of connections	2
Connection position	Sideways
Number of measurement input	2
Cable cross section	0.2...10 mm <sup>2</sup> , flexible with cable end 0.2...10 mm <sup>2</sup> , solid with cable end 0.5...16 mm <sup>2</sup> , solid without cable end 0.5...16 mm <sup>2</sup> , flexible without cable end
Tightening torque	13.27...15.93 lbf.in (1.5...1.8 N.m)
Wire stripping length	0.39 in (10 mm)

Tool type	Connection : screwdriver Disconnection : screwdriver
System Voltage	600 V CSA 690 V conforming to ATEX Exe II Ex II 2 GD 600 V cURus 1000 V conforming to EN/IEC 60947-7-1
[In] rated current	57 A conforming to EN/IEC 60947-7-1 65 A CSA 65 A cURus 54 A conforming to ATEX Exe II Ex II 2 GD
Material	Polyamide 6/6 (insulating case) Copper alloy (connector and screw) Copper alloy (commoning link) Chromium-nickel steel (spring)
Dielectric loss	0.01 at 1 MHz conforming to IEC 60250 0.01 at 1 MHz conforming to VDE 0303-T4
Dielectric constant	3.7 at 1 MHz
Resistivity	10000 M $\Omega$ .m conforming to IEC 60093 10000 M $\Omega$ .m conforming to VDE 0303-T30
Surface resistance	1000 G $\Omega$ conforming to IEC 60093 1000 G $\Omega$ conforming to VDE 0303-T30
Creep resistance	500 CTI (> 400 kV) conforming to IEC 60093 500 CTI (> 400 kV) conforming to VDE 0303-T30
Flame retardance	V0, thickness 0.03 in (0.8 mm) conforming to UL 94
Product weight	0.63 oz (18 g)
Range compatibility	Prisma - G Prisma - P Pragma Prisma - PH Prisma - Pack Spacial Kaedra TeSys
Product compatibility	Spacial enclosures

## Environment

Product certifications	ATEX CSA cURus DNV GL LR VDE IEC-Ex EAC
Dielectric strength	1000 V conforming to IEC 60243-1
Ambient air temperature for operation	-40...266 °F (-40...130 °C) conforming to IEC 60216-1 -40...266 °F (-40...130 °C) conforming to VDE 0304-T21


## Ordering and shipping details

Category	21715 - IEC TERMINAL BLOCKS-NSY,AM1,DF6,GK1
Discount Schedule	CP5
GTIN	00785901860396
Nbr. of units in pkg.	50
Package weight(Lbs)	4.000000000000001E-2
Returnability	Y
Country of origin	DE

## Offer Sustainability

Sustainable offer status	Green Premium product
RoHS (date code: YYWW)	Compliant - since 1052 - Schneider Electric declaration of conformity

 [Schneider Electric declaration of conformity](#)

REACH	Reference contains SVHC above the threshold - <a href="#">Go to CaP for more details</a>  <a href="#">Go to CaP for more details</a>
Product environmental profile	Available
Product end of life instructions	Need no specific recycling operations
California proposition 65	WARNING: This product can expose you to chemicals including:
- - - - - Substance 1	Lead and lead compounds, which is known to the State of California to cause cancer and birth defects or other reproductive harm.
- - - - - More information	For more information go to <a href="http://www.p65warnings.ca.gov">www.p65warnings.ca.gov</a>

### Contractual warranty

Warranty period	18 months
-----------------	-----------