

Product data sheet

Characteristics

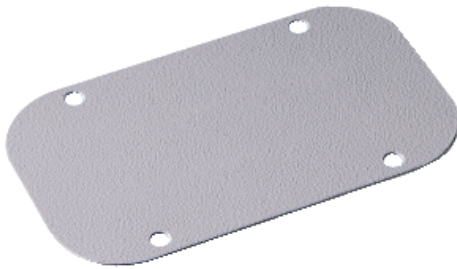
NSYTLCRND

Std for CRN WM To be coupled with cable entry
D. L417xW90

Product availability : Non-Stock - Not normally stocked in distribution facility



Price** : 10.35 USD



Main

Range	Spacial
Product or component type	Cable gland plate
Accessory / separate part category	Cable management accessory
Application	Multi-purpose
Range compatibility	Spacial CRN
Mounting location	Enclosure bottom
Cable gland type	Standard
Device composition	fixing elements 1 plate 1 separated seal
Quantity per set	Set of 1
Material	Plate steel Seal polyethylene (PE) foam

Complementary

Color	Plate grey RAL 7035)
Surface finish	Epoxy-polyester powder
Height	0.39 in (10 mm)
Width	Real 17.72 in (450 mm)
Net weight	1.25 lb(US) (0.566 kg)
Thickness	0.04 in (1 mm)

Ordering and shipping details

Category	80036 - ENCLOSURE SYSTEMS ACCESSORIES
Discount Schedule	ES1
GTIN	03606480211584

Package weight(Lbs)	0.56 kg (1.23 lb(US))
Returnability	No
Country of origin	ES

Offer Sustainability

Sustainable offer status	Green Premium product
REACH Regulation	REACH Declaration
REACH free of SVHC	Yes
EU RoHS Directive	Pro-active compliance (Product out of EU RoHS legal scope) EU RoHS Declaration
Toxic heavy metal free	Yes
Mercury free	Yes
RoHS exemption information	Yes
China RoHS Regulation	China RoHS declaration Pro-active China RoHS declaration (out of China RoHS legal scope)
Environmental Disclosure	Product Environmental Profile
Circularity Profile	No need of specific recycling operations

Contractual warranty

Warranty	18 months
----------	-----------