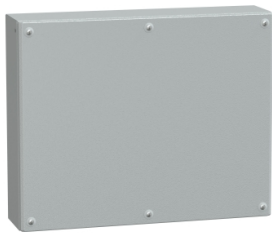


# Product data sheet

Specifications



## Metal industrial box plain door H400xW500xD120 IP66 IK10 RAL 7035

NSYSBM405012

Product availability: Non-Stock - Not normally stocked in distribution facility

Price\*: 122.08 USD

### Main

Range	Spacial
Product Name	Spacial SBM
Device Application	Multi-purpose
Category	Industrial box
Device Short Name	SBM
Enclosure Type	Flat face box
Enclosure Nominal Height	15.75 in (400 mm)
Enclosure Nominal Width	19.69 in (500 mm)
Enclosure Nominal Depth	4.72 in (120 mm)
Enclosure Mounting	Wall mounted
Device Composition	1 cover 1 body 6 cover screw
Body Type	Single piece body folded and welded
Type Of Front Cover	Plain door
Cover Fixing	Half turn metal screw
Lock Type	Captive screw PZ2 outside sealed area
Removable Parts	Cover by captive screws

### Complementary

Material	sheet steel
Surface Finish	Polyester powder
Color	Gray RAL 7035)
Standards	IEC 62208
Product Certifications	LR DNV-GL UL BV
Ip Degree Of Protection	IP66 IEC 60529
Ik Degree Of Protection	IK10 conforming to IEC 62262
Ambient Air Temperature For Storage	-31...140 °F (-35...60 °C)
Operating Temperature	-31...176 °F (-35...80 °C)

Price is "List Price" and may be subject to a trade discount – check with your local distributor or retailer for actual price.

Disclaimer: This documentation is not intended as a substitute for and is not to be used for determining suitability or reliability of these products for specific user applications

Net Weight	16.20 lb(US) (7.35 kg)
------------	------------------------

## Ordering and shipping details

Category	US10ES180033
Discount Schedule	0ES1
Gtin	3606480520266
Returnability	No
Country Of Origin	IN

## Packing Units

Unit Type Of Package 1	PCE
Number Of Units In Package 1	1
Package 1 Height	5.71 in (14.5 cm)
Package 1 Width	16.73 in (42.5 cm)
Package 1 Length	20.87 in (53.0 cm)
Package 1 Weight	16.20 lb(US) (7.35 kg)
Unit Type Of Package 2	P12
Number Of Units In Package 2	48
Package 2 Height	70.87 in (180.0 cm)
Package 2 Width	31.50 in (80.0 cm)
Package 2 Length	47.24 in (120.0 cm)
Package 2 Weight	826.73 lb(US) (375.0 kg)

## Contractual warranty

Warranty	18 months
----------	-----------

Sustainability



**Green Premium™ label** is Schneider Electric’s commitment to delivering products with best-in-class environmental performance. Green Premium promises compliance with the latest regulations, transparency on environmental impacts, as well as circular and low-CO<sub>2</sub> products.

**Guide to assessing product sustainability** is a white paper that clarifies global eco-label standards and how to interpret environmental declarations.

[Learn more about Green Premium >](#)

[Guide to assess a product’s sustainability >](#)



Transparency   RoHS/REACH

Well-being performance

✓	Reach Free Of Svhc	
✓	Toxic Heavy Metal Free	
✓	Mercury Free	
✓	Rohs Exemption Information	Yes

Certifications & Standards

Reach Regulation	<a href="#">REACH Declaration</a>
Eu Rohs Directive	Pro-active compliance (Product out of EU RoHS legal scope) <a href="#">EU RoHS Declaration</a>
China Rohs Regulation	<a href="#">China RoHS declaration</a> Pro-active China RoHS declaration (out of China RoHS legal scope)
Environmental Disclosure	<a href="#">Product Environmental Profile</a>
Circularity Profile	No need of specific recycling operations