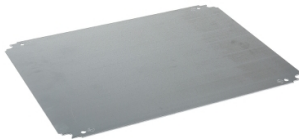


Product data sheet

Specifications



Plain mounting plate
H200xW300mm made of
galvanised sheet steel

NSYMM23

! Discontinued

Main

Range	Spacial
Accessory / Separate Part Category	Mounting accessory
Product Or Component Type	Mounting plate
Device Application	Multi-purpose
Enclosure Nominal Dimensions	-
Mounting Location	Step slide Direct fixing on backstuds
Mounting Plate Description	Plain
Range Compatibility	Spacial Spacial S3D Spacial Spacial CRN Spacial Spacial S3X Thalassa Thalassa PLM
Quantity Per Set	Set of 1
Material	galvanised steel

Complementary

Fixing Mode	Screwed on backstuds M8 By fixing element
Permanent Permissible Load	88.18 lb(US) (40 kg)
Height	5.91 in (150 mm)
Width	9.84 in (250 mm)
Depth	4.92 in (125 mm)
Thickness	0.07 in (1.8 mm)
Net Weight	1.17 lb(US) (0.53 kg)

Ordering and shipping details

Category	80033-ENCLOSURE SYSTEMS POLYESTER
Discount Schedule	ES1
Gtin	00785901983361
Returnability	No
Country Of Origin	ES

Contractual warranty

Price is "List Price" and may be subject to a trade discount – check with your local distributor or retailer for actual price.

Disclaimer: This documentation is not intended as a substitute for and is not to be used for determining suitability or reliability of these products for specific user applications

Warranty

18 months

Sustainability



Green Premium™ label is Schneider Electric’s commitment to delivering products with best-in-class environmental performance. Green Premium promises compliance with the latest regulations, transparency on environmental impacts, as well as circular and low-CO₂ products.

Guide to assessing product sustainability is a white paper that clarifies global eco-label standards and how to interpret environmental declarations.

[Learn more about Green Premium >](#)

[Guide to assess a product’s sustainability >](#)



Transparency RoHS/REACH

Certifications & Standards

Eu Rohs Directive	Pro-active compliance (Product out of EU RoHS legal scope)
	EU RoHS Declaration
<hr/>	
Environmental Disclosure	Product Environmental Profile