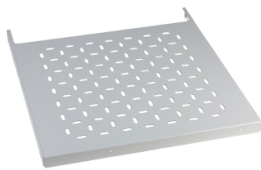


Product data sheet

Specifications



Fixed tray, PanelSeT SFN, Spacial SF, Spacial SM, for electrical enclosure W600 D400mm, steel

NSYFXT6040

Product availability: Non-Stock - Not normally stocked in distribution facility

Price*: 284.74 USD

Main

Range	Spacial
Accessory / Separate Part Category	Installation accessory
Product Or Component Type	Fixed tray
Application	Multi-purpose
For Enclosure Nominal Dimensions	- W: 23.62 in (600 mm) D: 15.75 in (400 mm)
Mounting Support	Direct to the structure 40 mm cross rails
Range Compatibility	Spacial Spacial SF Spacial Spacial SM
Device Composition	1 fixed tray fixing elements
Quantity Per Set	Set of 1

Complementary

Material	steel
Color	Gray RAL 7035)
Surface Finish	Epoxy-polyester powder
Adjustment	Adjustable in depth every 25 mm
Maximum Load	330.69 lb(US) (150 kg) evenly distributed
Height	1.18 in (30 mm)
Width	18.98 in (482 mm)
Depth	11.42 in (290 mm)

Ordering and shipping details

Category	US10ES180035
Discount Schedule	0ES1
Gtin	3606480064494
Returnability	No
Country Of Origin	FR

Packing Units

Unit Type Of Package 1	PCE
------------------------	-----

Price is "List Price" and may be subject to a trade discount – check with your local distributor or retailer for actual price.

Disclaimer: This documentation is not intended as a substitute for and is not to be used for determining suitability or reliability of these products for specific user applications

Number Of Units In Package 1	1
Package 1 Height	1.18 in (3 cm)
Package 1 Width	12.20 in (31 cm)
Package 1 Length	19.29 in (49 cm)
Package 1 Weight	5.21 lb(US) (2.362 kg)
Unit Type Of Package 2	PAM
Number Of Units In Package 2	60
Package 2 Height	35.43 in (90 cm)
Package 2 Width	39.37 in (100 cm)
Package 2 Length	47.24 in (120 cm)
Package 2 Weight	341.72 lb(US) (155 kg)

Contractual warranty

Warranty	18 months
----------	-----------

Sustainability



Green Premium™ label is Schneider Electric’s commitment to delivering products with best-in-class environmental performance. Green Premium promises compliance with the latest regulations, transparency on environmental impacts, as well as circular and low-CO₂ products.

Guide to assessing product sustainability is a white paper that clarifies global eco-label standards and how to interpret environmental declarations.

[Learn more about Green Premium >](#)

[Guide to assess a product’s sustainability >](#)



Transparency RoHS/REACH

Well-being performance

 Mercury Free

 RoHS Exemption Information [Yes](#)

Certifications & Standards

Reach Regulation	REACH Declaration
Eu Rohs Directive	Pro-active compliance (Product out of EU RoHS legal scope)
China Rohs Regulation	China RoHS declaration Product out of China RoHS scope. Substance declaration for your information.
Environmental Disclosure	Product Environmental Profile
Circularity Profile	No need of specific recycling operations