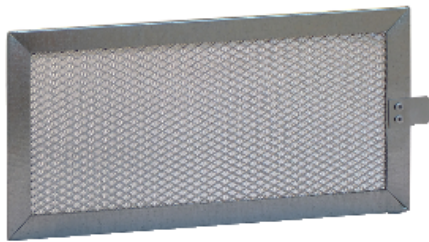


Product availability : Non-Stock - Not normally stocked in distribution facility



### Main

Range	ClimaSys
Product name	ClimaSys CU
Product or component type	Filter
Range compatibility	ClimaSys CU cooling unit
Accessory / separate part category	Thermal management accessory

### Complementary

Product destination	For top-mounting cooling unit - power: 1150 W For top-mounting cooling unit - power: 1550 W For top-mounting cooling unit - power: 2050 W
Accessory / separate part destination	ClimaSys cooling unit
Material	Aluminium

### Ordering and shipping details

Category	80036 - ENCLOSURE SYSTEMS ACCESSORIES
Discount Schedule	ES1
GTIN	003606480685668
Nbr. of units in pkg.	1
Package weight(Lbs)	2.2000000000000002
Returnability	N

### Offer Sustainability

Sustainable offer status	Green Premium product
RoHS (date code: YYWW)	Compliant - since 0940 - Schneider Electric declaration of conformity <a href="#">Schneider Electric declaration of conformity</a>
REACH	Reference not containing SVHC above the threshold

Reference not containing SVHC above the threshold

---

Product environmental profile	Available
Product end of life instructions	Need no specific recycling operations
California proposition 65	WARNING: Cancer and Reproductive Harm - <a href="http://www.P65Warnings.ca.gov">www.P65Warnings.ca.gov</a>

---