

Product data sheet

Characteristics

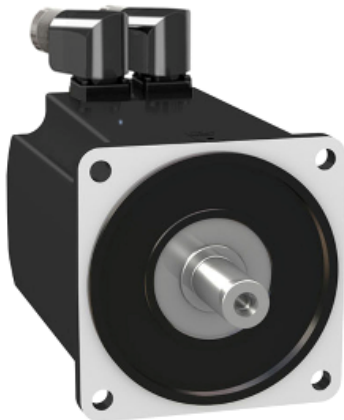
MH31401P06F2200

servo motor MH3 140 11,1Nm,no key,single 16 lines,brake,IP65/IP67,3kRPM

Product availability : Non-Stock - Not normally stocked in distribution facility



Price* : 1,833.24 USD



Main

Range compatibility	PacDrive 3
Product or component type	AC servo motors
Device short name	MH3

Complementary

Maximum mechanical speed	4000 rpm
[Us] rated supply voltage	115...480 V
Phase	Three phase
Continuous stall current	8.58 A
Continuous stall torque	91.15 lbf.in (10.3 N.m) at 115...480 V three phase
Continuous power	2640 W
Peak stall torque	39.9 N.m at 115...480 V three phase
Nominal output power	0.98 W at 115 V 1.78 W at 230 V 2.64 W at 400 V 2.64 W at 480 V
Nominal torque	67.52 lbf.in (7.63 N.m) at 230 V 60.18 lbf.in (6.8 N.m) at 400 V 6.25 N.m at 480 V 7.82 N.m at 115 V
Nominal speed	1000 rpm at 115 V 2000 rpm at 230 V 3500 rpm at 400 V 3500 rpm at 480 V
Maximum current Irms	29.8 A
Shaft end	Smooth shaft
Second shaft	Without second shaft end
Shaft diameter	0.94 in (24 mm)

Disclaimer: This documentation is not intended as a substitute for and is not to be used for determining suitability or reliability of these products for specific user applications

Shaft length	1.97 in (50 mm)
IP degree of protection	IP65 (standard)
Encoder type	Single turn SinCos Hiperface
Speed feedback resolution	16 periods
Holding brake	With
Holding torque	159.29 lbf.in (18 N.m)
Mounting support	International standard flange
Motor flange size	5.51 in (140 mm)
Electrical connection	Rotatable right-angled connectors
Torque constant	1.2 N.m/A at 248 °F (120 °C)
Back emf constant	77.41 V/krpm
Number of motor poles	10
Rotor inertia	17.96 kg.cm ²
Stator resistance	0.69 Ohm
Stator inductance	6.72 mH
Stator electrical time constant	9.7 ms
Maximum radial force Fr	1930 N at 1000 rpm 1530 N at 2000 rpm 1340 N at 3000 rpm
Brake pull-in power	18 W
Type of cooling	Natural convection
Length	7.36 in (187 mm)
Centring collar diameter	5.12 in (130 mm)
Centring collar depth	0.14 in (3.5 mm)
Number of mounting holes	4
Mounting holes diameter	0.43 in (11 mm)
Circle diameter of the mounting holes	6.5 in (165 mm)
Product weight	22.71 lb(US) (10.3 kg)

Ordering and shipping details

Category	18359 - PACDRIVE3 SERVO MOTORS
Discount Schedule	PC52
Nbr. of units in pkg.	1
Package weight(Lbs)	23.300000000000001
Returnability	N

Offer Sustainability

Sustainable offer status	Green Premium product
RoHS (date code: YYWW)	Compliant - since 1328 - Schneider Electric declaration of conformity Schneider Electric declaration of conformity
REACH	Reference not containing SVHC above the threshold Reference not containing SVHC above the threshold
Product environmental profile	Available
Product end of life instructions	Need no specific recycling operations
California proposition 65	WARNING: This product can expose you to chemicals including:
----- Substance 1	Lead and lead compounds, which is known to the State of California to cause cancer and birth defects or other reproductive harm.
----- More information	For more information go to www.p65warnings.ca.gov