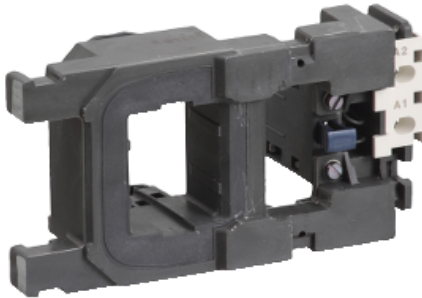


Product availability : Non-Stock - Not normally stocked in distribution facility



Price** : 138.00 USD



Main

Range	TeSys
Product or component type	Contacteur coil
Device short name	LX4FH
Range compatibility	TeSys F LC1F contacteur
Product compatibility	LC1F265 LC1F330
Control circuit type	DC low consumption
[Uc] control circuit voltage	125 V DC
Average resistance	20.8 Ohm inrush 68 °F (20 °C) 3840 Ohm holding 68 °F (20 °C)
Inductance of closed circuit	530 H
Operating time	40...50 ms closing 40...65 ms opening
Mechanical durability	10 Mcycles
Maximum operating rate	2400 cyc/h 131 °F (55 °C)

Complementary

Coil technology	Without built-in suppressor module
Control circuit voltage limits	Operational 0.85...1.1 Uc 131 °F (55 °C) Drop-out 0.15...0.2 Uc 131 °F (55 °C)
Inrush power in W	750 W 68 °F (20 °C)
Hold-in power consumption in W	5 W 68 °F (20 °C)

Environment

Ambient air temperature for operation	23...131 °F (-5...55 °C)
Net weight	1.63 lb(US) (0.74 kg)

Disclaimer: This documentation is not intended as a substitute for and is not to be used for determining suitability or reliability of these products for specific user applications.

Ordering and shipping details

Category	22341 - CONTACTOR,D,K,&F ACCESS
Discount Schedule	I12
GTIN	03389110083583
Package weight(Lbs)	1.41 kg (3.1 lb(US))
Returnability	No
Country of origin	CZ

Offer Sustainability

Sustainable offer status	Green Premium product
California proposition 65	WARNING: This product can expose you to chemicals including: No which is known to the State of California to cause No harm. For more information go to www.p65warnings.ca.gov
REACH Regulation	REACH Declaration
REACH free of SVHC	Yes
EU RoHS Directive	Not applicable, out of EU RoHS legal scope
Toxic heavy metal free	Yes
Mercury free	Yes
RoHS exemption information	Yes
China RoHS Regulation	China RoHS declaration
Environmental Disclosure	Product Environmental Profile
Circularity Profile	End of Life Information

Contractual warranty

Warranty	18 months
----------	-----------