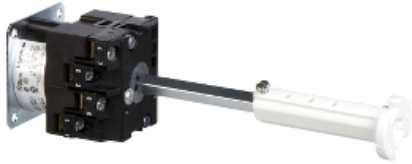


K1F527M

body for voltmeter switch - 3L and 3L-N - 45° - 12 A - rear mounting

Price* : 212.00 USD

K1F527M has not been replaced. Please contact your customer care center for more information.



⚠ Discontinued

Main

Range of product	Harmony K
Product or component type	Cam switch body
Component name	K1
[Ith] conventional free air thermal current	12 A
Sub-assembly composition	Contact blocks + fixing plate
Cam switch function	Voltmeter switch
Type of measurement	Between 3 phases and between each of the 3 phases and neutral
Off position	With Off position
Switching positions	Left: 0° - 315° - 270° - 225° Right: 0° - 45° - 90° - 135°
Product mounting	Rear mounting
Fixing mode	4 holes
Bezel material	Plastic

Complementary

Switching angle	45 °
[Ui] rated insulation voltage	690 V degree of pollution 3 conforming to IEC 60947-1
[Ithe] conventional enclosed thermal current	10 A
Rated operational power in W	600 W AC-3/230 V 1 phase conforming to IEC 947-3 1500 W AC-3/400 V 1 phase conforming to IEC 947-3 1100 W AC-3/230 V 3 phases conforming to IEC 947-3 8300 W AC-21/400 V 3 phases conforming to IEC 947-3 1500 W AC-3/690 V 3 phases conforming to IEC 947-3 2200 W AC-23A/400 V 3 phases conforming to IEC 947-3 1500 W AC-3/500 V 3 phases conforming to IEC 947-3 2200 W AC-23A/500 V 3 phases conforming to IEC 947-3 1500 W AC-3/400 V 3 phases conforming to IEC 947-3 1500 W AC-23A/230 V 3 phases conforming to IEC 947-3 2200 W AC-23A/690 V 3 phases conforming to IEC 947-3 4800 W AC-21/230 V 3 phases conforming to IEC 947-3 10500 W AC-21/500 - 660 V 3 phases conforming to IEC 947-3
[Ie] rated operational current AC	1 A at 500 V AC-15 conforming to IEC 947-5-1 2 A at 400 V AC-15 conforming to IEC 947-5-1 3 A at 230 V AC-15 conforming to IEC 947-5-1 1.8 A at 690 V AC-3 3 phases conforming to IEC 947-3

	2.8 A at 500 V AC-3 3 phases conforming to IEC 947-3 2.8 A at 690 V AC-23A 3 phases conforming to IEC 947-3 3.3 A at 400 V AC-3 3 phases conforming to IEC 947-3 3.8 A at 500 V AC-23A 3 phases conforming to IEC 947-3 4.6 A at 230 V AC-3 3 phases conforming to IEC 947-3 4.8 A at 400 V AC-23A 3 phases conforming to IEC 947-3 5.6 A at 230 V AC-23A 3 phases conforming to IEC 947-3
Electrical durability	1000000 cycles AC-15 1000000 cycles AC-21 500000 cycles AC-23 500000 cycles AC-3
Operating rate	2.5 cyc/mn AC-21 2.5 cyc/mn AC-23 2.5 cyc/mn AC-3 8.333 cyc/mn AC-15
Short-circuit current	10000 A
Short-circuit protection	16 A by cartridge fuse, type gG
[Uimp] rated impulse withstand voltage	4 kV in isolating function 6 kV conforming to IEC 947-1
Contact operation	Slow-break
Positive opening	With
Electrical connection	Captive screw clamp terminals flexible, 2 x 1.5 mm ² Captive screw clamp terminals solid, 1 x 2.5 mm ²
Mechanical durability	1000000 cycles
Product weight	0.28 lb(US) (0.126 kg)

Environment

Standards	CENELEC EN 50013 EN 60947-3 power circuit EN 60947-5-1 control circuit IEC 60947-3 power circuit IEC 60947-5-1 control circuit
Product certifications	CSA 240 V 1 hp 1 phase CSA 240 V 3 hp 3 phases 2 -pole(s) UL 240 V 1 hp 3 phases UL 240 V 0.33 hp 1 phase 2 -pole(s)
Protective treatment	TC
Ambient air temperature for operation	-13...131 °F (-25...55 °C)
Ambient air temperature for storage	-40...158 °F (-40...70 °C)
Shock resistance	30 gn conforming to IEC 68-2-27
Vibration resistance	5 gn, 10...150 Hz conforming to IEC 68-2-6
Electrical shock protection class	Class II conforming to IEC 536 Class II conforming to NF C 20-030

Ordering and shipping details

Category	18406 - WORLD SERVICE PARTS(OTHER OP INT)
Discount Schedule	CS2
Nbr. of units in pkg.	1
Package weight(Lbs)	0.39000000000000001
Returnability	N

Contractual warranty

Warranty period	18 months
-----------------	-----------