

Product data sheet

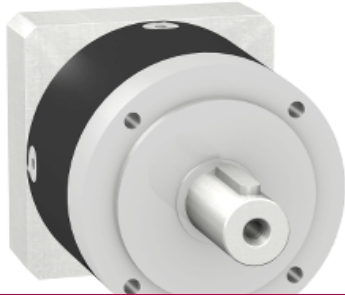
Characteristics

GBX0800040702F

gearbox with straight teeth GBX- Ø 80 mm-
reduction 4:1- < 9arcmin- 115 N.m

Price* : 512.00 USD

GBX0800040702F has not been replaced. Please contact your customer care center for more information.



⚠ Discontinued

Main

Range compatibility	Lexium 15 Lexium 32
Product or component type	Planetary gearbox
Gear box type	Straight teeth
Device short name	GBX
Gearbox external diameter	3.15 in (80 mm)
Product compatibility	BSH0702...
Reduction ratio	4:1

Complementary

Torsional backlash	< 9 arc.min
Torsional rigidity	6 N.m/arcmin
Housing colour	Black
Housing material	Black anodized aluminium
Shaft material	C 45
Additional information	Lubricated for life
Service life in hours	At 100 rpm at 86 °F (30 °C)
Efficiency	96 %
Mounting position	Any position
Maximum radial force Fr	650 N at 100 rpm, force applied at mid-distance from output shaft during 30000 hour at 30 °C 950 N at 100 rpm, force applied at mid-distance from output shaft during 10000 hour at 30 °C
Maximum axial force Fa	1200 N at 100 rpm, during 10000 hour at 30 °C 900 N at 100 rpm, during 30000 hour at 30 °C
Moment of inertia	0 lb.in ² (0.52 g.cm ²)
Continuous output torque	1017.7 lbf.in (115 N.m) at 100 rpm at 86 °F (30 °C)
Maximum output torque	1628.32 lbf.in (184 N.m) at 100 rpm at 86 °F (30 °C)
Product weight	4.63 lb(US) (2.1 kg)

Environment

Noise level	60 dB at 1 m, no-load
IP degree of protection	IP54 on shaft output
Ambient temperature for operation	-13...194 °F (-25...90 °C)

Ordering and shipping details

Category	18305 - MOTION CONTROL CONNECTORS & ACCESS
Discount Schedule	PC51
Nbr. of units in pkg.	1
Package weight(Lbs)	4.8600000000000003
Returnability	N
Country of origin	DE

Contractual warranty

Warranty period	18 months
-----------------	-----------