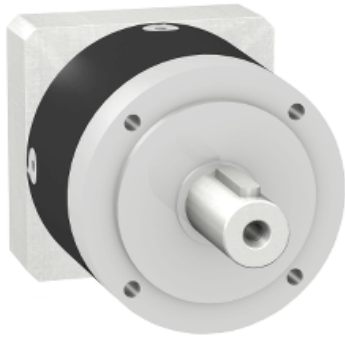


Product data sheet

Characteristics

GBX0600600701F

gearbox with straight teeth GBX- Ø 60 mm-
reduction 60:1- < 22arcmin- 44 N.m



Main

Range compatibility	Lexium 32
Product or component type	Planetary gearbox
Gear box type	Straight teeth
Device short name	GBX
Gearbox external diameter	2.36 in (60 mm)
Product compatibility	BMH0701... BSH0701...
Reduction ratio	60:1

Complementary

Torsional backlash	< 22 arc.min
Torsional rigidity	2.5 N.m/arcmin
Housing colour	Black
Housing material	Black anodized aluminium
Shaft material	C 45
Additional information	Lubricated for life
Service life in hours	At 100 rpm at 86 °F (30 °C)
Efficiency	94 %
Maximum radial force Fr	340 N at 100 rpm, force applied at mid-distance from output shaft during 30000 hour at 30 °C 500 N at 100 rpm, force applied at mid-distance from output shaft during 10000 hour at 30 °C
Maximum axial force Fa	450 N at 100 rpm, during 30000 hour at 30°C 600 N at 100 rpm, during 10000 hour at 30°C
Continuous output torque	389.38 lbf.in (44 N.m) at 100 rpm at 86 °F (30 °C)
Maximum output torque	619.47 lbf.in (70 N.m) at 100 rpm at 86 °F (30 °C)
Product weight	2.87 lb(US) (1.3 kg)

Environment

Noise level	58 dB at 1 m, no-load
IP degree of protection	IP54 on shaft output
Ambient temperature for operation	-13...194 °F (-25...90 °C)

Contractual warranty

Warranty period	18 months
-----------------	-----------
