

Product data sheet

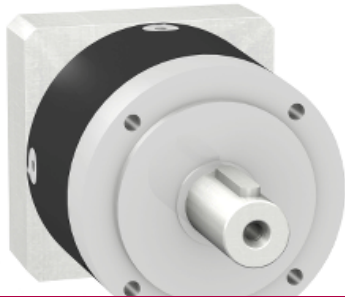
Characteristics

GBX0600250552F

gearbox with straight teeth GBX- Ø 60 mm-
reduction 25:1- < 20arcmin- 40 N.m

Price* : 517.00 USD

GBX0600250552F has not been replaced. Please contact your customer care center for more information.



⚠ Discontinued

Main

| | |
|---------------------------|------------------------|
| Range compatibility | Lexium 15 Lexium 32 |
| Product or component type | Planetary gearbox |
| Gear box type | Straight teeth |
| Device short name | GBX |
| Gearbox external diameter | 2.36 in (60 mm) |
| Product compatibility | BSH0552... |
| Reduction ratio | 25:1 |

Complementary

| | |
|--------------------------|--|
| Torsional backlash | < 20 arc.min |
| Torsional rigidity | 2.5 N.m/arcmin |
| Housing colour | Black |
| Housing material | Black anodized aluminium |
| Shaft material | C 45 |
| Additional information | Lubricated for life |
| Service life in hours | At 100 rpm at 86 °F (30 °C) |
| Efficiency | 94 % |
| Mounting position | Any position |
| Maximum radial force Fr | 340 N at 100 rpm, force applied at mid-distance from output shaft during 30000 hour at 30 °C 500 N at 100 rpm, force applied at mid-distance from output shaft during 10000 hour at 30 °C |
| Maximum axial force Fa | 450 N at 100 rpm, during 30000 hour at 30 °C 600 N at 100 rpm, during 10000 hour at 30 °C |
| Moment of inertia | 0 lb.in ² (0.075 g.cm ²) |
| Continuous output torque | 353.98 lbf.in (40 N.m) at 100 rpm at 86 °F (30 °C) |
| Maximum output torque | 566.37 lbf.in (64 N.m) at 100 rpm at 86 °F (30 °C) |
| Product weight | 2.43 lb(US) (1.1 kg) |

Environment

| | |
|-----------------------------------|----------------------------|
| Noise level | 58 dB at 1 m, no-load |
| IP degree of protection | IP54 on shaft output |
| Ambient temperature for operation | -13...194 °F (-25...90 °C) |

Ordering and shipping details

| | |
|-----------------------|--|
| Category | 18305 - MOTION CONTROL CONNECTORS & ACCESS |
| Discount Schedule | PC51 |
| Nbr. of units in pkg. | 1 |
| Package weight(Lbs) | 2.6000000000000001 |
| Returnability | N |
| Country of origin | DE |

Contractual warranty

| | |
|-----------------|-----------|
| Warranty period | 18 months |
|-----------------|-----------|