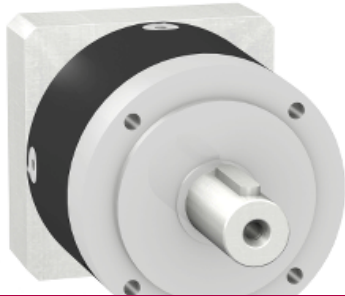




Price\* : 571.00 USD

GBX0600200601S has not been replaced. Please contact your customer care center for more information.



⚠ Discontinued

Main

Range compatibility	Lexium SD3
Product or component type	Planetary gearbox
Gear box type	Straight teeth
Device short name	GBX
Gearbox external diameter	2.36 in (60 mm)
Product compatibility	BRS368W13
Reduction ratio	20:1

Complementary

Torsional backlash	< 20 arc.min
Torsional rigidity	2.5 N.m/arcmin
Housing colour	Black
Housing material	Black anodized aluminium
Shaft material	C 45
Additional information	Lubricated for life
Service life in hours	At 100 rpm at 86 °F (30 °C)
Efficiency	94 %
Mounting position	Any position
Maximum radial force Fr	340 N at 100 rpm, force applied at mid-distance from output shaft during 30000 hour at 30 °C 500 N at 100 rpm, force applied at mid-distance from output shaft during 10000 hour at 30 °C
Maximum axial force Fa	450 N at 100 rpm, during 30000 hour at 30 °C 600 N at 100 rpm, during 10000 hour at 30 °C
Moment of inertia	0 lb.in <sup>2</sup> (0.075 g.cm <sup>2</sup> )
Continuous output torque	389.38 lbf.in (44 N.m) at 100 rpm at 86 °F (30 °C)
Maximum output torque	619.47 lbf.in (70 N.m) at 100 rpm at 86 °F (30 °C)
Product weight	2.43 lb(US) (1.1 kg)

Disclaimer: This documentation is not intended as a substitute for and is not to be used for determining suitability or reliability of these products for specific user applications

## Environment

Noise level	58 dB at 1 m, no-load
IP degree of protection	IP54 on shaft output
Ambient temperature for operation	-13...194 °F (-25...90 °C)

## Ordering and shipping details

Category	18305 - MOTION CONTROL CONNECTORS & ACCESS
Discount Schedule	PC51
Nbr. of units in pkg.	1
Package weight(Lbs)	2.6400000000000001
Returnability	N
Country of origin	DE

## Offer Sustainability

Sustainable offer status	Green Premium product
RoHS (date code: YYWW)	Compliant - since 0912 - Schneider Electric declaration of conformity <a href="#">Schneider Electric declaration of conformity</a>
REACH	Reference not containing SVHC above the threshold <a href="#">Reference not containing SVHC above the threshold</a>
Product environmental profile	Available
Product end of life instructions	Need no specific recycling operations

## Contractual warranty

Warranty period	18 months
-----------------	-----------