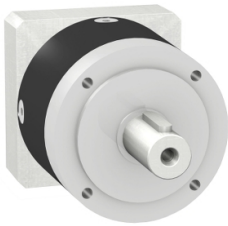


# Product data sheet

Specifications



gearbox with straight teeth GBX- Ø 60 mm- reduction 12:1- < 20arcmin- 44 N.m

GBX0600120601S

⚠ Discontinued

## Main

Range Compatibility	Lexium SD3
Product Or Component Type	Planetary gearbox
Gear Box Type	Straight teeth
Device Short Name	GBX
Gearbox External Diameter	2.36 in (60 mm)
Product Compatibility	BRS368W13
Reduction Ratio	12:1

## Complementary

Maximum Torsional Backlash	20 arc.min
Torsional Rigidity	2.5 N.m/arcmin
Housing Colour	Black
Housing Material	Black anodized aluminium
Shaft Material	C 45
Additional Information	Lubricated for life
Service Life In Hours	30000 h 100 rpm 86 °F (30 °C)
Efficiency	94 %
Mounting Position	Any position
Maximum Radial Force Fr	340 N 100 rpm, force applied at mid-distance from output shaft during 30000 hour at 30 °C 500 N 100 rpm, force applied at mid-distance from output shaft during 10000 hour at 30 °C
Maximum Axial Force Fa	450 N 100 rpm, during 30000 hour at 30°C 600 N 100 rpm, during 10000 hour at 30°C
Moment Of Inertia	0.00 lb.in² (0.127 g.cm²)
Continuous Output Torque	389.43 lbf.in (44 N.m) 100 rpm 86 °F (30 °C)
Maximum Output Torque	619.55 lbf.in (70 N.m) 100 rpm 86 °F (30 °C)
Net Weight	2.43 lb(US) (1.1 kg)

## Environment

Noise Level	58 dB 1 m, no-load
Ip Degree Of Protection	Shaft output IP54

Price is "List Price" and may be subject to a trade discount – check with your local distributor or retailer for actual price.

Disclaimer: This documentation is not intended as a substitute for and is not to be used for determining suitability or reliability of these products for specific user applications

Ambient Temperature For Operation	-13...194 °F (-25...90 °C)
-----------------------------------	----------------------------

## Ordering and shipping details

Category	18305-MOTION CONTROL CONNECTORS & ACCESS
Discount Schedule	PC51
Gtin	3389119224789
Returnability	No
Country Of Origin	DE

## Contractual warranty

Warranty	18 months
----------	-----------