

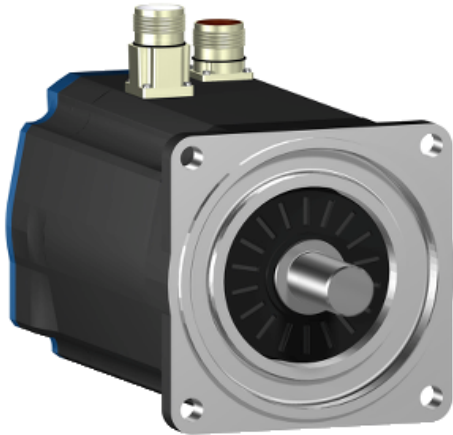
# BSH1404P21F1P

AC servo motor BSH - 32.1 N.m - 3000 rpm -  
untapped shaft - with brake - IP65

Product availability : Non-Stock - Not normally stocked in distribution facility



Price\* : 3,415.00 USD



## Main

Product or component type	Servo motor
Device short name	BSH
Maximum mechanical speed	4000 rpm
Continuous stall torque	295.58 lbf.in (33.4 N.m) LXM32.D72N4 24 A at 400 V three phase 295.58 lbf.in (33.4 N.m) LXM32.D72N4 24 A at 480 V three phase 284.07 lbf.in (32.1 N.m) LXM05AD57N4 at 380...480 V three phase 284.07 lbf.in (32.1 N.m) LXM05BD57N4 at 380...480 V three phase 284.07 lbf.in (32.1 N.m) LXM05CD57N4 at 380...480 V three phase
Peak stall torque	916.81 lbf.in (103.6 N.m) LXM32.D72N4 24 A at 400 V three phase 916.81 lbf.in (103.6 N.m) LXM32.D72N4 24 A at 480 V three phase 558.32 lbf.in (63.09 N.m) LXM05AD57N4 at 380...480 V three phase 558.32 lbf.in (63.09 N.m) LXM05BD57N4 at 380...480 V three phase 558.32 lbf.in (63.09 N.m) LXM05CD57N4 at 380...480 V three phase
Nominal output power	5000 W LXM32.D72N4 24 A at 400 V three phase 5000 W LXM32.D72N4 24 A at 480 V three phase 3400 W LXM05AD57N4 at 380...480 V three phase 3400 W LXM05BD57N4 at 380...480 V three phase 3400 W LXM05CD57N4 at 380...480 V three phase
Nominal torque	168.14 lbf.in (19 N.m) LXM32.D72N4 24 A at 400 V three phase 168.14 lbf.in (19 N.m) LXM32.D72N4 24 A at 480 V three phase 95.58 lbf.in (10.8 N.m) LXM05AD57N4 at 380...480 V three phase 95.58 lbf.in (10.8 N.m) LXM05BD57N4 at 380...480 V three phase 95.58 lbf.in (10.8 N.m) LXM05CD57N4 at 380...480 V three phase
Nominal speed	2500 rpm LXM32.D72N4 24 A at 400 V three phase 2500 rpm LXM32.D72N4 24 A at 480 V three phase 3000 rpm LXM05AD57N4 at 380...480 V three phase 3000 rpm LXM05BD57N4 at 380...480 V three phase 3000 rpm LXM05CD57N4 at 380...480 V three phase
Product compatibility	LXM05AD57N4 at 380...480 V three phase LXM05BD57N4 at 380...480 V three phase LXM05CD57N4 at 380...480 V three phase LXM32.D72N4 at 400 V three phase LXM32.D72N4 at 480 V three phase

Disclaimer: This documentation is not intended as a substitute for and is not to be used for determining suitability or reliability of these products for specific user applications

Shaft end	Untapped
IP degree of protection	IP65 (standard) IP67 (with IP67 kit)
Speed feedback resolution	131072 points/turn
Holding brake	With
Mounting support	International standard flange
Electrical connection	Straight connectors

## Complementary

Range compatibility	Lexium 32 Lexium 05
Supply voltage max	480 V
Phase	Three phase
Continuous stall current	21.3 A
Maximum continuous power	4.33 W
Maximum current Irms	95.6 A LXM05AD57N4 95.6 A LXM05BD57N4 95.6 A LXM05CD57N4 72 A LXM32.D72N4
Maximum permanent current	95.6 A
Switching frequency	8 kHz
Second shaft	Without second shaft end
Shaft diameter	0.94 in (24 mm)
Shaft length	1.97 in (50 mm)
Feedback type	Single turn SinCos Hiperface
Holding torque	318.58 lbf.in (36 N.m) (holding brake)
Motor flange size	5.51 in (140 mm)
Number of motor stacks	4
Torque constant	1.57 N.m/A at 248 °F (120 °C)
Back emf constant	104 V/krpm at 248 °F (120 °C)
Number of motor poles	10
Rotor inertia	29.2 kg.cm <sup>2</sup>
Stator resistance	0.28 Ohm at 68 °F (20 °C)
Stator inductance	3.9 mH at 68 °F (20 °C)
Stator electrical time constant	13.93 ms at 68 °F (20 °C)
Maximum radial force Fr	1840 N at 3000 rpm 2110 N at 2000 rpm 2660 N at 1000 rpm
Maximum axial force Fa	0.2 x Fr
Brake pull-in power	26 W
Type of cooling	Natural convection
Length	16.56 in (420.5 mm)
Centring collar diameter	5.12 in (130 mm)
Centring collar depth	0.14 in (3.5 mm)
Number of mounting holes	4
Mounting holes diameter	0.43 in (11 mm)
Circle diameter of the mounting holes	6.5 in (165 mm)
Product weight	61.29 lb(US) (27.8 kg)

## Ordering and shipping details

Category	18282 - LEXIUM 32 MOTORS
Discount Schedule	PC53
GTIN	003389118361577
Nbr. of units in pkg.	1

Package weight(Lbs)	45.300000000000004
Returnability	N
Country of origin	DE

### Offer Sustainability

Sustainable offer status	Green Premium product
RoHS (date code: YYWW)	Compliant - since 1018 - Schneider Electric declaration of conformity <a href="#">Schneider Electric declaration of conformity</a>
REACH	Reference not containing SVHC above the threshold <a href="#">Reference not containing SVHC above the threshold</a>
Product environmental profile	Available
Product end of life instructions	Need no specific recycling operations

### Contractual warranty

Warranty period	18 months
-----------------	-----------