

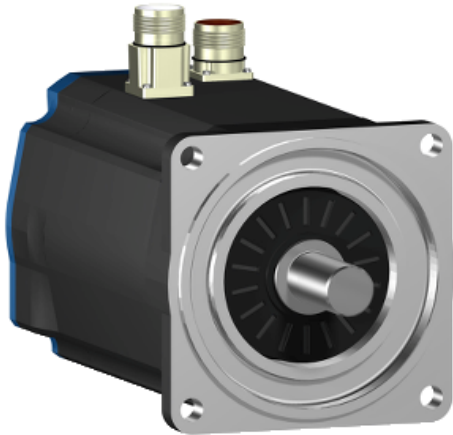
BSH1402T22F1P

AC servo motor BSH - 14.4 N.m - 3000 rpm -
untapped shaft - with brake - IP65

Product availability : Non-Stock - Not normally stocked in distribution facility



Price* : 2,910.00 USD



Main

Product or component type	Servo motor
Device short name	BSH
Maximum mechanical speed	4000 rpm
Continuous stall torque	172.57 lbf.in (19.5 N.m) LXM32.D72N4 24 A at 400 V three phase 172.57 lbf.in (19.5 N.m) LXM32.D72N4 24 A at 480 V three phase 127.43 lbf.in (14.4 N.m) LXM05AD42M3X at 200...240 V three phase 127.43 lbf.in (14.4 N.m) LXM05BD42M3X at 200...240 V three phase 127.43 lbf.in (14.4 N.m) LXM05CD42M3X at 200...240 V three phase
Peak stall torque	524.78 lbf.in (59.3 N.m) LXM32.D72N4 24 A at 400 V three phase 524.78 lbf.in (59.3 N.m) LXM32.D72N4 24 A at 480 V three phase 217.35 lbf.in (24.56 N.m) LXM05AD42M3X at 200...240 V three phase 217.35 lbf.in (24.56 N.m) LXM05BD42M3X at 200...240 V three phase
Nominal output power	3900 W LXM32.D72N4 24 A at 400 V three phase 3900 W LXM32.D72N4 24 A at 480 V three phase 2900 W LXM05AD42M3X at 200...240 V three phase 2900 W LXM05BD42M3X at 200...240 V three phase 2900 W LXM05CD42M3X at 200...240 V three phase
Nominal torque	108.85 lbf.in (12.3 N.m) LXM32.D72N4 24 A at 400 V three phase 108.85 lbf.in (12.3 N.m) LXM32.D72N4 24 A at 480 V three phase 81.42 lbf.in (9.2 N.m) LXM05AD42M3X at 200...240 V three phase 81.42 lbf.in (9.2 N.m) LXM05BD42M3X at 200...240 V three phase 81.42 lbf.in (9.2 N.m) LXM05CD42M3X at 200...240 V three phase
Nominal speed	3000 rpm LXM32.D72N4 24 A at 400 V three phase 3000 rpm LXM32.D72N4 24 A at 480 V three phase 3000 rpm LXM05AD42M3X at 200...240 V three phase 3000 rpm LXM05BD42M3X at 200...240 V three phase 3000 rpm LXM05CD42M3X at 200...240 V three phase
Product compatibility	LXM05AD42M3X at 200...240 V three phase LXM05BD42M3X at 200...240 V three phase LXM05CD42M3X at 200...240 V three phase
Shaft end	Untapped
IP degree of protection	IP65 (standard) IP67 (with IP67 kit)

Disclaimer: This documentation is not intended as a substitute for and is not to be used for determining suitability or reliability of these products for specific user applications

Speed feedback resolution	131072 points/turn x 4096 turns
Holding brake	With
Mounting support	International standard flange
Electrical connection	Straight connectors

Complementary

Range compatibility	Lexium 05 Lexium 32
Supply voltage max	480 V
Phase	Three phase
Continuous stall current	22.5 A
Maximum continuous power	4.2 W
Maximum current Irms	75.2 A LXM05AD42M3X 75.2 A LXM05BD42M3X 75.2 A LXM05CD42M3X 72 A LXM32.D72N4
Maximum permanent current	75.2 A
Switching frequency	8 kHz
Second shaft	Without second shaft end
Shaft diameter	0.94 in (24 mm)
Shaft length	1.97 in (50 mm)
Feedback type	Multiturn SinCos Hiperface
Holding torque	203.54 lbf.in (23 N.m) (holding brake)
Motor flange size	5.51 in (140 mm)
Number of motor stacks	2
Torque constant	1.47 N.m/A at 248 °F (120 °C)
Back emf constant	101 V/krpm at 248 °F (120 °C)
Number of motor poles	10
Rotor inertia	14.48 kg.cm ²
Stator resistance	0.6 Ohm at 68 °F (20 °C)
Stator inductance	7.4 mH at 68 °F (20 °C)
Stator electrical time constant	12.1 ms at 68 °F (20 °C)
Maximum radial force Fr	1680 N at 3000 rpm 1930 N at 2000 rpm 2430 N at 1000 rpm
Maximum axial force Fa	0.2 x Fr
Brake pull-in power	24 W
Type of cooling	Natural convection
Length	12.22 in (310.5 mm)
Centring collar diameter	5.12 in (130 mm)
Centring collar depth	0.14 in (3.5 mm)
Number of mounting holes	4
Mounting holes diameter	0.43 in (11 mm)
Circle diameter of the mounting holes	6.5 in (165 mm)
Product weight	39.02 lb(US) (17.7 kg)

Ordering and shipping details

Category	18282 - LEXIUM 32 MOTORS
Discount Schedule	PC53
GTIN	003389118361294
Nbr. of units in pkg.	1
Package weight(Lbs)	29.30000000000001
Returnability	N
Country of origin	DE

Offer Sustainability

Sustainable offer status	Green Premium product
RoHS (date code: YYWW)	Compliant - since 1018 - Schneider Electric declaration of conformity Schneider Electric declaration of conformity
REACH	Reference not containing SVHC above the threshold Reference not containing SVHC above the threshold
Product environmental profile	Available
Product end of life instructions	Need no specific recycling operations

Contractual warranty

Warranty period	18 months
-----------------	-----------