

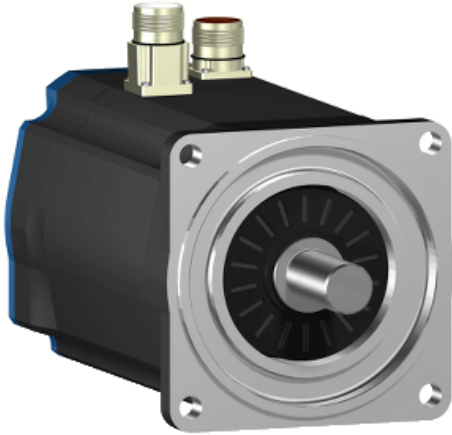
BSH1401P31F1A

AC servo motor BSH - 11.1 N.m - 1500 rpm -
keyed shaft - with brake - IP65

Product availability : Non-Stock - Not normally stocked in distribution facility



Price* : 2,395.00 USD



Main

Product or component type	Servo motor
Device short name	BSH
Maximum mechanical speed	4000 rpm
Continuous stall torque	98.23 lbf.in (11.1 N.m) LXM32.D30N4 10 A at 400 V three phase 98.23 lbf.in (11.1 N.m) LXM32.D30N4 10 A at 480 V three phase 98.23 lbf.in (11.1 N.m) LXM15MD28N4 at 400 V three phase 98.23 lbf.in (11.1 N.m) LXM15MD28N4 at 480 V three phase 98.23 lbf.in (11.1 N.m) LXM15MD28N4 at 230 V three phase 98.23 lbf.in (11.1 N.m) LXM15MD40N4 at 400 V three phase 98.23 lbf.in (11.1 N.m) LXM15MD40N4 at 480 V three phase 98.23 lbf.in (11.1 N.m) LXM15LD28M3 at 230 V three phase 100.88 lbf.in (11.4 N.m) LXM05AD34N4 at 380...480 V three phase 100.88 lbf.in (11.4 N.m) LXM05BD34N4 at 380...480 V three phase 100.88 lbf.in (11.4 N.m) LXM05CD34N4 at 380...480 V three phase
Peak stall torque	238.94 lbf.in (27 N.m) LXM32.D30N4 10 A at 480 V three phase 238.94 lbf.in (27 N.m) LXM32.D30N4 10 A at 400 V three phase 206.46 lbf.in (23.33 N.m) LXM15MD28N4 at 230 V three phase 206.46 lbf.in (23.33 N.m) LXM15MD28N4 at 400 V three phase 206.46 lbf.in (23.33 N.m) LXM15MD28N4 at 480 V three phase 206.46 lbf.in (23.33 N.m) LXM15MD40N4 at 400 V three phase 206.46 lbf.in (23.33 N.m) LXM15MD40N4 at 480 V three phase 210.62 lbf.in (23.8 N.m) LXM15LD28M3 at 230 V three phase 206.46 lbf.in (23.33 N.m) LXM05AD34N4 at 380...480 V three phase 206.46 lbf.in (23.33 N.m) LXM05BD34N4 at 380...480 V three phase 206.46 lbf.in (23.33 N.m) LXM05CD34N4 at 380...480 V three phase
Nominal output power	2500 W LXM32.D30N4 10 A at 400 V three phase 3000 W LXM32.D30N4 10 A at 480 V three phase 2000 W LXM15MD28N4 at 400 V three phase 2000 W LXM15MD40N4 at 400 V three phase 2200 W LXM05AD34N4 at 380...480 V three phase 2200 W LXM05BD34N4 at 380...480 V three phase 2200 W LXM05CD34N4 at 380...480 V three phase 1400 W LXM15LD28M3 at 230 V three phase 1400 W LXM15MD28N4 at 230 V three phase 2150 W LXM15MD28N4 at 480 V three phase

Disclaimer: This documentation is not intended as a substitute for and is not to be used for determining suitability or reliability of these products for specific user applications

2150 W LXM15MD40N4 at 480 V three phase

Nominal torque	84.07 lbf.in (9.5 N.m) LXM32.D30N4 10 A at 400 V three phase 84.07 lbf.in (9.5 N.m) LXM32.D30N4 10 A at 480 V three phase 60.18 lbf.in (6.8 N.m) LXM15MD28N4 at 480 V three phase 60.18 lbf.in (6.8 N.m) LXM15MD40N4 at 480 V three phase 61.06 lbf.in (6.9 N.m) LXM05AD34N4 at 380...480 V three phase 61.06 lbf.in (6.9 N.m) LXM05BD34N4 at 380...480 V three phase 61.06 lbf.in (6.9 N.m) LXM05CD34N4 at 380...480 V three phase 67.52 lbf.in (7.63 N.m) LXM15MD28N4 at 400 V three phase 67.52 lbf.in (7.63 N.m) LXM15MD40N4 at 400 V three phase 80.53 lbf.in (9.1 N.m) LXM15LD28M3 at 230 V three phase 80.53 lbf.in (9.1 N.m) LXM15MD28N4 at 230 V three phase
Nominal speed	3000 rpm LXM32.D30N4 10 A at 480 V three phase 2500 rpm LXM32.D30N4 10 A at 400 V three phase 3000 rpm LXM05AD34N4 at 380...480 V three phase 3000 rpm LXM05BD34N4 at 380...480 V three phase 3000 rpm LXM05CD34N4 at 380...480 V three phase 1500 rpm LXM15MD28N4 at 230 V three phase 1500 rpm LXM15LD28M3 at 230 V three phase 2500 rpm LXM15MD28N4 at 400 V three phase 2500 rpm LXM15MD40N4 at 400 V three phase 3000 rpm LXM15MD28N4 at 480 V three phase 3000 rpm LXM15MD40N4 at 480 V three phase
Product compatibility	LXM15LD28M3 at 230 V three phase LXM05AD34N4 at 380...480 V three phase LXM05BD34N4 at 380...480 V three phase LXM05CD34N4 at 380...480 V three phase LXM15MD28N4 at 400 V three phase LXM15MD28N4 at 480 V three phase LXM15MD40N4 at 400 V three phase LXM15MD40N4 at 480 V three phase LXM15MD28N4 at 230 V three phase
Shaft end	Keyed
IP degree of protection	IP65 (standard) IP67 (with IP67 kit)
Speed feedback resolution	131072 points/turn
Holding brake	With
Mounting support	International standard flange
Electrical connection	Straight connectors

Complementary

Range compatibility	Lexium 05 Lexium 15 Lexium 32
Supply voltage max	480 V
Phase	Three phase
Continuous stall current	7.8 A
Maximum continuous power	3.6 W
Maximum current Irms	20.8 A LXM05AD34N4 20.8 A LXM05BD34N4 20.8 A LXM05CD34N4 20.8 A LXM15LD28M3 20.8 A LXM15MD28N4 20.8 A LXM15MD40N4 20.8 A LXM32.D30N4
Maximum permanent current	20.8 A
Switching frequency	8 kHz
Second shaft	Without second shaft end
Shaft diameter	0.94 in (24 mm)
Shaft length	1.97 in (50 mm)
Key width	1.57 in (40 mm)
Feedback type	Single turn SinCos Hiperface
Holding torque	203.54 lbf.in (23 N.m) (holding brake)
Motor flange size	5.51 in (140 mm)

Number of motor stacks	1
Torque constant	1.43 N.m/A at 248 °F (120 °C)
Back emf constant	100 V/krpm at 248 °F (120 °C)
Number of motor poles	10
Rotor inertia	9.21 kg.cm ²
Stator resistance	1.41 Ohm at 68 °F (20 °C)
Stator inductance	15.6 mH at 68 °F (20 °C)
Stator electrical time constant	11.06 ms at 68 °F (20 °C)
Maximum radial force Fr	1530 N at 3000 rpm 1760 N at 2000 rpm 2210 N at 1000 rpm
Maximum axial force Fa	0.2 x Fr
Brake pull-in power	24 W
Type of cooling	Natural convection
Length	10.06 in (255.5 mm)
Centring collar diameter	5.12 in (130 mm)
Centring collar depth	0.14 in (3.5 mm)
Number of mounting holes	4
Mounting holes diameter	0.43 in (11 mm)
Circle diameter of the mounting holes	6.5 in (165 mm)
Product weight	28.66 lb(US) (13 kg)

Ordering and shipping details

Category	18282 - LEXIUM 32 MOTORS
Discount Schedule	PC53
GTIN	003389118141001
Nbr. of units in pkg.	1
Package weight(Lbs)	21.5
Returnability	N
Country of origin	DE

Offer Sustainability

Sustainable offer status	Green Premium product
RoHS (date code: YYWW)	Compliant Schneider Electric declaration of conformity
REACH	Reference not containing SVHC above the threshold Reference not containing SVHC above the threshold
Product environmental profile	Available
Product end of life instructions	Need no specific recycling operations
California proposition 65	WARNING: This product can expose you to chemicals including:
----- Substance 1	Lead and lead compounds, which is known to the State of California to cause cancer and birth defects or other reproductive harm.
----- More information	For more information go to www.p65warnings.ca.gov

Contractual warranty

Warranty period	18 months
-----------------	-----------