

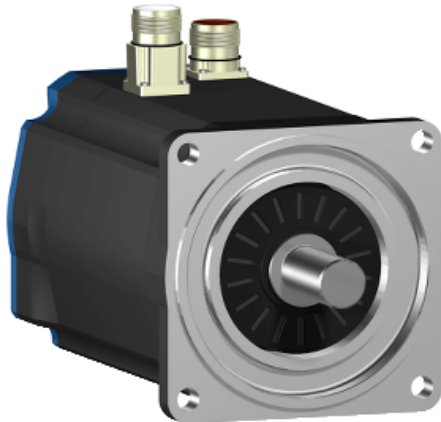
BSH1004P22F1A

AC servo motor BSH - 9.31 N.m - 1500 rpm -
untapped shaft - with brake - IP65

Product availability : Non-Stock - Not normally stocked in distribution facility



Price* : 2,645.00 USD



Main

Product or component type	Servo motor
Device short name	BSH
Maximum mechanical speed	6000 rpm
Continuous stall torque	70.8 lbf.in (8 N.m) LXM32.D30N4 10 A at 400 V three phase 70.8 lbf.in (8 N.m) LXM32.D30N4 10 A at 480 V three phase 82.39 lbf.in (9.31 N.m) LXM15MD40N4 at 400 V three phase 82.39 lbf.in (9.31 N.m) LXM15MD40N4 at 480 V three phase 82.39 lbf.in (9.31 N.m) LXM15MD28M3 at 230 V three phase 82.39 lbf.in (9.31 N.m) LXM15MD28N4 at 230 V three phase 82.39 lbf.in (9.31 N.m) LXM15MD28N4 at 400 V three phase 82.39 lbf.in (9.31 N.m) LXM15MD28N4 at 480 V three phase 82.39 lbf.in (9.31 N.m) LXM15MD40N4 at 230 V three phase 82.39 lbf.in (9.31 N.m) LXM05AD34N4 at 380...480 V three phase 82.39 lbf.in (9.31 N.m) LXM05AD42M3X at 200...240 V three phase 82.39 lbf.in (9.31 N.m) LXM05AD57N4 at 380...480 V three phase 82.39 lbf.in (9.31 N.m) LXM05BD34N4 at 380...480 V three phase 82.39 lbf.in (9.31 N.m) LXM05BD42M3X at 200...240 V three phase 82.39 lbf.in (9.31 N.m) LXM05BD57N4 at 380...480 V three phase 82.39 lbf.in (9.31 N.m) LXM05CD34N4 at 380...480 V three phase 82.39 lbf.in (9.31 N.m) LXM05CD42M3X at 200...240 V three phase 82.39 lbf.in (9.31 N.m) LXM05CD57N4 at 380...480 V three phase
Peak stall torque	335.4 lbf.in (37.9 N.m) LXM32.D30N4 10 A at 480 V three phase 335.4 lbf.in (37.9 N.m) LXM32.D30N4 10 A at 400 V three phase 227.43 lbf.in (25.7 N.m) LXM15MD28M3 at 230 V three phase 227.43 lbf.in (25.7 N.m) LXM15MD28N4 at 230 V three phase 227.43 lbf.in (25.7 N.m) LXM15MD28N4 at 400 V three phase 227.43 lbf.in (25.7 N.m) LXM15MD28N4 at 480 V three phase 299.38 lbf.in (33.83 N.m) LXM15MD40N4 at 230 V three phase 299.38 lbf.in (33.83 N.m) LXM15MD40N4 at 400 V three phase 299.38 lbf.in (33.83 N.m) LXM15MD40N4 at 480 V three phase 207.7 lbf.in (23.47 N.m) LXM05AD34N4 at 380...480 V three phase 315.93 lbf.in (35.7 N.m) LXM05AD42M3X at 200...240 V three phase 315.93 lbf.in (35.7 N.m) LXM05AD57N4 at 380...480 V three phase 207.7 lbf.in (23.47 N.m) LXM05BD34N4 at 380...480 V three phase 315.93 lbf.in (35.7 N.m) LXM05BD42M3X at 200...240 V three phase 315.93 lbf.in (35.7 N.m) LXM05BD57N4 at 380...480 V three phase

Disclaimer: This documentation is not intended as a substitute for and is not to be used for determining suitability or reliability of these products for specific user applications

	<p>207.7 lbf.in (23.47 N.m) LXM05CD34N4 at 380...480 V three phase 315.93 lbf.in (35.7 N.m) LXM05CD42M3X at 200...240 V three phase 315.93 lbf.in (35.7 N.m) LXM05CD57N4 at 380...480 V three phase</p>
Nominal output power	<p>2600 W LXM32.D30N4 10 A at 480 V three phase 2100 W LXM32.D30N4 10 A at 400 V three phase 1300 W LXM05AD42M3X at 200...240 V three phase 1300 W LXM05BD42M3X at 200...240 V three phase 1300 W LXM05CD42M3X at 200...240 V three phase 1300 W LXM15MD28M3 at 230 V three phase 1300 W LXM15MD28N4 at 230 V three phase 1300 W LXM15MD40N4 at 230 V three phase 2200 W LXM05AD34N4 at 380...480 V three phase 2200 W LXM05AD57N4 at 380...480 V three phase 2200 W LXM05BD34N4 at 380...480 V three phase 2200 W LXM05BD57N4 at 380...480 V three phase 2200 W LXM05CD34N4 at 380...480 V three phase 2200 W LXM05CD57N4 at 380...480 V three phase 2200 W LXM15MD28N4 at 400 V three phase 2300 W LXM15MD40N4 at 400 V three phase 2400 W LXM15MD40N4 at 480 V three phase 2700 W LXM15MD28N4 at 480 V three phase</p>
Nominal torque	<p>73.45 lbf.in (8.3 N.m) LXM32.D30N4 10 A at 400 V three phase 73.45 lbf.in (8.3 N.m) LXM32.D30N4 10 A at 480 V three phase 57.52 lbf.in (6.5 N.m) LXM15MD28N4 at 480 V three phase 59.2 lbf.in (6.69 N.m) LXM15MD40N4 at 480 V three phase 61.95 lbf.in (7 N.m) LXM15MD28N4 at 400 V three phase 62.83 lbf.in (7.1 N.m) LXM05AD34N4 at 380...480 V three phase 62.83 lbf.in (7.1 N.m) LXM05AD57N4 at 380...480 V three phase 62.83 lbf.in (7.1 N.m) LXM05BD34N4 at 380...480 V three phase 62.83 lbf.in (7.1 N.m) LXM05BD57N4 at 380...480 V three phase 62.83 lbf.in (7.1 N.m) LXM05CD34N4 at 380...480 V three phase 62.83 lbf.in (7.1 N.m) LXM05CD57N4 at 380...480 V three phase 63.45 lbf.in (7.17 N.m) LXM15MD40N4 at 400 V three phase 72.39 lbf.in (8.18 N.m) LXM15MD40N4 at 230 V three phase 72.74 lbf.in (8.22 N.m) LXM05AD42M3X at 200...240 V three phase 72.74 lbf.in (8.22 N.m) LXM05BD42M3X at 200...240 V three phase 72.74 lbf.in (8.22 N.m) LXM05CD42M3X at 200...240 V three phase 72.74 lbf.in (8.22 N.m) LXM15LD28M3 at 230 V three phase 72.74 lbf.in (8.22 N.m) LXM15MD28N4 at 230 V three phase</p>
Nominal speed	<p>3000 rpm LXM32.D30N4 10 A at 480 V three phase 2500 rpm LXM32.D30N4 10 A at 400 V three phase 1500 rpm LXM05AD42M3X at 200...240 V three phase 1500 rpm LXM05BD42M3X at 200...240 V three phase 1500 rpm LXM05CD42M3X at 200...240 V three phase 3000 rpm LXM05AD34N4 at 380...480 V three phase 3000 rpm LXM05BD34N4 at 380...480 V three phase 3000 rpm LXM05CD34N4 at 380...480 V three phase 1500 rpm LXM15MD28M3 at 230 V three phase 1500 rpm LXM15MD28N4 at 230 V three phase 1500 rpm LXM15MD40N4 at 230 V three phase 3000 rpm LXM05AD57N4 at 380...480 V three phase 3000 rpm LXM05BD57N4 at 380...480 V three phase 3000 rpm LXM05CD57N4 at 380...480 V three phase 3000 rpm LXM15MD28N4 at 400 V three phase 3000 rpm LXM15MD40N4 at 400 V three phase 3500 rpm LXM15MD40N4 at 480 V three phase 4000 rpm LXM15MD28N4 at 480 V three phase</p>
Product compatibility	<p>LXM05AD42M3X at 200...240 V three phase LXM05BD42M3X at 200...240 V three phase LXM05CD42M3X at 200...240 V three phase LXM05AD34N4 at 380...480 V three phase LXM05BD34N4 at 380...480 V three phase LXM05CD34N4 at 380...480 V three phase LXM15MD28N4 at 400 V three phase LXM15MD28N4 at 480 V three phase LXM15MD40N4 at 400 V three phase LXM15MD40N4 at 480 V three phase LXM32.D30N4 at 400 V three phase LXM32.D30N4 at 480 V three phase LXM05AD57N4 at 380...480 V three phase LXM05BD57N4 at 380...480 V three phase LXM05CD57N4 at 380...480 V three phase LXM15MD28M3 at 230 V three phase LXM15MD28N4 at 230 V three phase</p>

LXM15MD40N4 at 230 V three phase

Shaft end	Untapped
IP degree of protection	IP65 (standard) IP67 (with IP67 kit)
Speed feedback resolution	131072 points/turn x 4096 turns
Holding brake	With
Mounting support	International standard flange
Electrical connection	Straight connectors

Complementary

Range compatibility	Lexium 05 Lexium 15 Lexium 32
Supply voltage max	480 V
Phase	Three phase
Continuous stall current	6.2 A
Maximum continuous power	3.64 W
Maximum current Irms	32.3 A LXM05AD34N4 32.3 A LXM05AD42M3X 32.3 A LXM05AD57N4 32.3 A LXM05BD34N4 32.3 A LXM05BD42M3X 32.3 A LXM05BD57N4 32.3 A LXM05CD34N4 32.3 A LXM05CD42M3X 32.3 A LXM05CD57N4 34.8 A LXM15LD28M3 34.8 A LXM15MD28N4 34.8 A LXM15MD40N4 30 A LXM32.D30N4
Maximum permanent current	32.3 A
Switching frequency	8 kHz
Second shaft	Without second shaft end
Shaft diameter	0.94 in (24 mm)
Shaft length	1.97 in (50 mm)
Feedback type	Multiturn SinCos Hiperface
Holding torque	106.19 lbf.in (12 N.m) (holding brake)
Motor flange size	3.94 in (100 mm)
Number of motor stacks	4
Torque constant	1.62 N.m/A at 248 °F (120 °C)
Back emf constant	103 V/krpm at 248 °F (120 °C)
Number of motor poles	8
Rotor inertia	5.245 kg.cm ²
Stator resistance	1.81 Ohm at 68 °F (20 °C)
Stator inductance	11.8 mH at 68 °F (20 °C)
Stator electrical time constant	6.52 ms at 68 °F (20 °C)
Maximum radial force Fr	1070 N at 1000 rpm 740 N at 3000 rpm 850 N at 2000 rpm
Maximum axial force Fa	0.2 x Fr
Brake pull-in power	17 W
Type of cooling	Natural convection
Length	12.11 in (307.5 mm)
Centring collar diameter	3.74 in (95 mm)
Centring collar depth	0.14 in (3.5 mm)
Number of mounting holes	4
Mounting holes diameter	0.35 in (9 mm)
Circle diameter of the mounting holes	4.53 in (115 mm)

Product weight	21.83 lb(US) (9.9 kg)
----------------	-----------------------

Ordering and shipping details

Category	18282 - LEXIUM 32 MOTORS
Discount Schedule	PC53
GTIN	003389118140493
Nbr. of units in pkg.	1
Package weight(Lbs)	17.900000000000002
Returnability	N
Country of origin	DE

Offer Sustainability

Sustainable offer status	Green Premium product
RoHS (date code: YYWW)	Compliant - since 0850 - Schneider Electric declaration of conformity Schneider Electric declaration of conformity
REACH	Reference not containing SVHC above the threshold Reference not containing SVHC above the threshold
Product environmental profile	Available
Product end of life instructions	Need no specific recycling operations

Contractual warranty

Warranty period	18 months
-----------------	-----------