

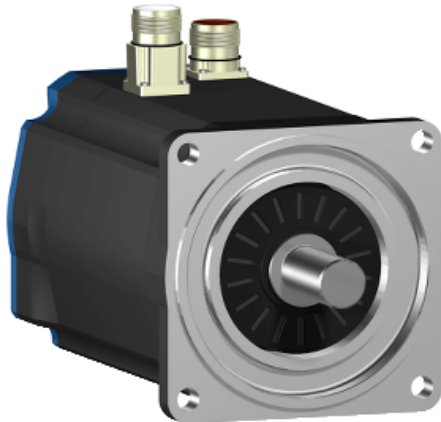
BSH1001P02F1A

AC servo motor BSH - 2.7 N.m - 3000 rpm -
untapped shaft - with brake - IP50

Product availability : Non-Stock - Not normally stocked in distribution facility



Price* : 1,830.00 USD



Main

Product or component type	Servo motor
Device short name	BSH
Maximum mechanical speed	6000 rpm
Continuous stall torque	29.2 lbf.in (3.3 N.m) for LXM32.D18N4 6 A at 400 V three phase 29.2 lbf.in (3.3 N.m) for LXM32.D18N4 6 A at 480 V three phase 30 lbf.in (3.39 N.m) LXM15LD21M3 at 230 V single phase 23.89 lbf.in (2.7 N.m) LXM15LD10N4 at 230 V three phase 30 lbf.in (3.39 N.m) LXM15LD10N4 at 400 V three phase 30 lbf.in (3.39 N.m) LXM15LD10N4 at 480 V three phase 30 lbf.in (3.39 N.m) LXM15LD21M3 at 230 V three phase 30 lbf.in (3.39 N.m) LXM15LD17N4 at 230 V three phase 30 lbf.in (3.39 N.m) LXM15LD17N4 at 400 V three phase 30 lbf.in (3.39 N.m) LXM15LD17N4 at 480 V three phase 30.09 lbf.in (3.4 N.m) LXM05AD17M3X at 200...240 V three phase 30.09 lbf.in (3.4 N.m) LXM05AD22N4 at 380...480 V three phase 30.09 lbf.in (3.4 N.m) LXM05BD17M3X at 200...240 V three phase 30.09 lbf.in (3.4 N.m) LXM05BD22N4 at 380...480 V three phase 30.09 lbf.in (3.4 N.m) LXM05CD17M3X at 200...240 V three phase 30.09 lbf.in (3.4 N.m) LXM05CD22N4 at 380...480 V three phase
Peak stall torque	84.96 lbf.in (9.6 N.m) for LXM32.D18N4 6 A at 480 V three phase 84.96 lbf.in (9.6 N.m) for LXM32.D18N4 6 A at 400 V three phase 62.65 lbf.in (7.08 N.m) LXM15LD21M3 at 230 V single phase 54.78 lbf.in (6.19 N.m) LXM15LD10N4 at 230 V three phase 54.78 lbf.in (6.19 N.m) LXM15LD10N4 at 400 V three phase 54.78 lbf.in (6.19 N.m) LXM15LD10N4 at 480 V three phase 62.65 lbf.in (7.08 N.m) LXM15LD21M3 at 230 V three phase 62.65 lbf.in (7.08 N.m) LXM15LD17N4 at 230 V three phase 62.65 lbf.in (7.08 N.m) LXM15LD17N4 at 400 V three phase 62.65 lbf.in (7.08 N.m) LXM15LD17N4 at 480 V three phase 62.83 lbf.in (7.1 N.m) LXM05AD17M3X at 200...240 V three phase 62.83 lbf.in (7.1 N.m) LXM05AD22N4 at 380...480 V three phase 62.83 lbf.in (7.1 N.m) LXM05BD17M3X at 200...240 V three phase 62.83 lbf.in (7.1 N.m) LXM05BD22N4 at 380...480 V three phase 62.83 lbf.in (7.1 N.m) LXM05CD17M3X at 200...240 V three phase 62.83 lbf.in (7.1 N.m) LXM05CD22N4 at 380...480 V three phase

Disclaimer: This documentation is not intended as a substitute for and is not to be used for determining suitability or reliability of these products for specific user applications

Nominal output power	<p>1100 W for LXM32.D18N4 6 A at 400 V three phase 1100 W for LXM32.D18N4 6 A at 480 V three phase 950 W LXM15LD21M3 at 230 V single phase 1300 W LXM15LD17N4 at 400 V three phase 1500 W LXM15LD10N4 at 480 V three phase 1300 W LXM15LD10N4 at 400 V three phase 1500 W LXM15LD17N4 at 480 V three phase 500 W LXM05AD17M3X at 200...240 V three phase 500 W LXM05BD17M3X at 200...240 V three phase 500 W LXM05CD17M3X at 200...240 V three phase 850 W LXM15LD10N4 at 230 V three phase 900 W LXM05AD22N4 at 380...480 V three phase 900 W LXM05BD22N4 at 380...480 V three phase 900 W LXM05CD22N4 at 380...480 V three phase 950 W LXM15LD17N4 at 230 V three phase 950 W LXM15LD21M3 at 230 V three phase</p>
Nominal torque	<p>23.89 lbf.in (2.7 N.m) LXM15LD10N4 at 230 V three phase 23.89 lbf.in (2.7 N.m) for LXM32.D18N4 6 A at 400 V three phase 23.89 lbf.in (2.7 N.m) for LXM32.D18N4 6 A at 480 V three phase 26.55 lbf.in (3 N.m) LXM15LD21M3 at 230 V single phase 22.12 lbf.in (2.5 N.m) LXM15LD10N4 at 480 V three phase 22.12 lbf.in (2.5 N.m) LXM15LD17N4 at 480 V three phase 23.89 lbf.in (2.7 N.m) LXM15LD10N4 at 400 V three phase 23.89 lbf.in (2.7 N.m) LXM15LD17N4 at 400 V three phase 25.84 lbf.in (2.92 N.m) LXM05AD22N4 at 380...480 V three phase 25.84 lbf.in (2.92 N.m) LXM05BD22N4 at 380...480 V three phase 25.84 lbf.in (2.92 N.m) LXM05CD22N4 at 380...480 V three phase 26.55 lbf.in (3 N.m) LXM15LD17N4 at 230 V three phase 26.55 lbf.in (3 N.m) LXM15LD21M3 at 230 V three phase 27.96 lbf.in (3.16 N.m) LXM05AD17M3X at 200...240 V three phase 27.96 lbf.in (3.16 N.m) LXM05BD17M3X at 200...240 V three phase 27.96 lbf.in (3.16 N.m) LXM05CD17M3X at 200...240 V three phase</p>
Nominal speed	<p>4000 rpm for LXM32.D18N4 6 A at 400 V three phase 4000 rpm for LXM32.D18N4 6 A at 480 V three phase 3000 rpm LXM15LD21M3 at 230 V single phase 3000 rpm LXM15LD10N4 at 230 V three phase 3000 rpm LXM05AD22N4 at 380...480 V three phase 3000 rpm LXM05BD22N4 at 380...480 V three phase 3000 rpm LXM05CD22N4 at 380...480 V three phase 3000 rpm LXM15LD17N4 at 230 V three phase 3000 rpm LXM15LD21M3 at 230 V three phase 1500 rpm LXM05AD17M3X at 200...240 V three phase 1500 rpm LXM05BD17M3X at 200...240 V three phase 1500 rpm LXM05CD17M3X at 200...240 V three phase 4500 rpm LXM15LD10N4 at 400 V three phase 4500 rpm LXM15LD17N4 at 400 V three phase 6000 rpm LXM15LD10N4 at 480 V three phase 6000 rpm LXM15LD17N4 at 480 V three phase</p>
Product compatibility	<p>LXM15LD21M3 at 230 V single phase LXM15LD10N4 at 400 V three phase LXM05AD17M3X at 200...240 V three phase LXM05BD17M3X at 200...240 V three phase LXM05CD17M3X at 200...240 V three phase LXM15LD10N4 at 230 V three phase LXM15LD10N4 at 480 V three phase LXM15LD21M3 at 230 V three phase LXM15LD17N4 at 230 V three phase LXM05AD22N4 at 380...480 V three phase LXM05BD22N4 at 380...480 V three phase LXM05CD22N4 at 380...480 V three phase LXM15LD17N4 at 400 V three phase LXM15LD17N4 at 480 V three phase LXM32.D18N4 at 400 V three phase LXM32.D18N4 at 480 V three phase</p>
Shaft end	Untapped
IP degree of protection	IP50 (standard)
Speed feedback resolution	131072 points/turn x 4096 turns
Holding brake	With
Mounting support	International standard flange
Electrical connection	Straight connectors

Complementary

Range compatibility	Lexium 05 Lexium 15 Lexium 32
Supply voltage max	480 V
Phase	Three phase
Continuous stall current	3.5 A
Maximum continuous power	1.6 W
Maximum current Irms	12 A LXM05AD17M3X 12 A LXM05AD22N4 12 A LXM05BD17M3X 12 A LXM05BD22N4 12 A LXM05CD17M3X 12 A LXM05CD22N4 12 A LXM15LD10N4 12 A LXM15LD17N4 12 A LXM15LD21M3 12 A LXM32.D18N4
Maximum permanent current	12 A
Switching frequency	8 kHz
Second shaft	Without second shaft end
Shaft diameter	0.75 in (19 mm)
Shaft length	1.57 in (40 mm)
Feedback type	Multiturn SinCos Hiperface
Holding torque	79.65 lbf.in (9 N.m) (holding brake)
Motor flange size	3.94 in (100 mm)
Number of motor stacks	1
Torque constant	0.89 N.m/A at 248 °F (120 °C)
Back emf constant	60 V/krpm at 248 °F (120 °C)
Number of motor poles	8
Rotor inertia	2.018 kg.cm ²
Stator resistance	3.8 Ohm at 68 °F (20 °C)
Stator inductance	17.6 mH at 68 °F (20 °C)
Stator electrical time constant	4.63 ms at 68 °F (20 °C)
Maximum radial force Fr	530 N at 5000 rpm 570 N at 4000 rpm 630 N at 3000 rpm 720 N at 2000 rpm 900 N at 1000 rpm
Maximum axial force Fa	0.2 x Fr
Brake pull-in power	18 W
Type of cooling	Natural convection
Length	7.85 in (199.5 mm)
Centring collar diameter	3.74 in (95 mm)
Centring collar depth	0.14 in (3.5 mm)
Number of mounting holes	4
Mounting holes diameter	0.35 in (9 mm)
Circle diameter of the mounting holes	4.53 in (115 mm)
Product weight	10.58 lb(US) (4.8 kg)

Ordering and shipping details

Category	18282 - LEXIUM 32 MOTORS
Discount Schedule	PC53
GTIN	003389118138087
Nbr. of units in pkg.	1
Package weight(Lbs)	10.9

Returnability	N
Country of origin	DE

Offer Sustainability

Sustainable offer status	Green Premium product
RoHS (date code: YYWW)	Compliant Schneider Electric declaration of conformity
REACH	Reference not containing SVHC above the threshold Reference not containing SVHC above the threshold
Product environmental profile	Available
Product end of life instructions	Need no specific recycling operations
California proposition 65	WARNING: This product can expose you to chemicals including:
- - - - - Substance 1	Lead and lead compounds, which is known to the State of California to cause cancer and birth defects or other reproductive harm.
- - - - - More information	For more information go to www.p65warnings.ca.gov

Contractual warranty

Warranty period	18 months
-----------------	-----------