

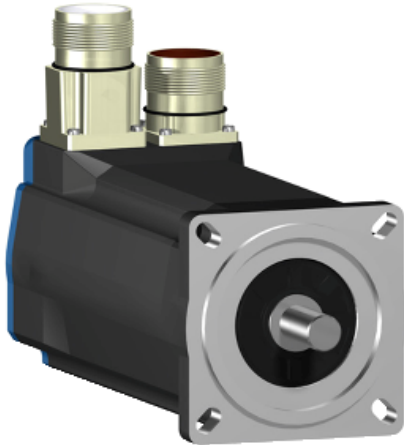
# BSH0703P32A2A

AC servo motor BSH - 1.1 N.m - 3000 rpm -  
keyed shaft - without brake - IP65

Product availability : Non-Stock - Not normally stocked in distribution facility



Price\* : 1,590.00 USD



## Main

Product or component type	Servo motor
Device short name	BSH
Maximum mechanical speed	8000 rpm
Continuous stall torque	<p>27.43 lbf.in (3.1 N.m) for LXM32.D18N4 6 A at 400 V three phase</p> <p>27.43 lbf.in (3.1 N.m) for LXM32.D18N4 6 A at 480 V three phase</p> <p>25.04 lbf.in (2.83 N.m) LXM15LD21M3 at 230 V single phase</p> <p>24.78 lbf.in (2.8 N.m) LXM05AD17M2 at 200...240 V single phase</p> <p>24.78 lbf.in (2.8 N.m) LXM05AD28M2 at 200...240 V single phase</p> <p>24.78 lbf.in (2.8 N.m) LXM05BD17M2 at 200...240 V single phase</p> <p>24.78 lbf.in (2.8 N.m) LXM05BD28M2 at 200...240 V single phase</p> <p>24.78 lbf.in (2.8 N.m) LXM05CD17M2 at 200...240 V single phase</p> <p>24.78 lbf.in (2.8 N.m) LXM05CD28M2 at 200...240 V single phase</p> <p>9.73 lbf.in (1.1 N.m) LXM15LU60N4 at 480 V three phase</p> <p>9.73 lbf.in (1.1 N.m) LXM15LU60N4 at 400 V three phase</p> <p>13.27 lbf.in (1.5 N.m) LXM15LU60N4 at 230 V three phase</p> <p>19.73 lbf.in (2.23 N.m) LXM15LD13M3 at 230 V three phase</p> <p>21.24 lbf.in (2.4 N.m) LXM15LD10N4 at 230 V three phase</p> <p>21.24 lbf.in (2.4 N.m) LXM15LD10N4 at 400 V three phase</p> <p>21.24 lbf.in (2.4 N.m) LXM15LD10N4 at 480 V three phase</p> <p>25.04 lbf.in (2.83 N.m) LXM15LD17N4 at 230 V three phase</p> <p>25.04 lbf.in (2.83 N.m) LXM15LD17N4 at 400 V three phase</p> <p>25.04 lbf.in (2.83 N.m) LXM15LD17N4 at 480 V three phase</p> <p>25.04 lbf.in (2.83 N.m) LXM15LD21M3 at 230 V three phase</p> <p>24.78 lbf.in (2.8 N.m) LXM05AD17M3X at 200...240 V three phase</p> <p>24.78 lbf.in (2.8 N.m) LXM05AD22N4 at 380...480 V three phase</p> <p>24.78 lbf.in (2.8 N.m) LXM05BD17M3X at 200...240 V three phase</p> <p>24.78 lbf.in (2.8 N.m) LXM05BD22N4 at 380...480 V three phase</p> <p>24.78 lbf.in (2.8 N.m) LXM05CD17M3X at 200...240 V three phase</p> <p>24.78 lbf.in (2.8 N.m) LXM05CD22N4 at 380...480 V three phase</p>
Peak stall torque	<p>100 lbf.in (11.3 N.m) for LXM32.D18N4 6 A at 400 V three phase</p> <p>100 lbf.in (11.3 N.m) for LXM32.D18N4 6 A at 480 V three phase</p> <p>53.01 lbf.in (5.99 N.m) LXM15LD21M3 at 230 V single phase</p> <p>63.36 lbf.in (7.16 N.m) LXM05AD17M2 at 200...240 V single phase</p> <p>91.15 lbf.in (10.3 N.m) LXM05AD28M2 at 200...240 V single phase</p> <p>63.36 lbf.in (7.16 N.m) LXM05BD17M2 at 200...240 V single phase</p> <p>91.15 lbf.in (10.3 N.m) LXM05BD28M2 at 200...240 V single phase</p>

Disclaimer: This documentation is not intended as a substitute for and is not to be used for determining suitability or reliability of these products for specific user applications

	<p>63.36 lbf.in (7.16 N.m) LXM05CD17M2 at 200...240 V single phase  91.15 lbf.in (10.3 N.m) LXM05CD28M2 at 200...240 V single phase  29.2 lbf.in (3.3 N.m) LXM15LU60N4 at 480 V three phase  29.2 lbf.in (3.3 N.m) LXM15LU60N4 at 400 V three phase  29.2 lbf.in (3.3 N.m) LXM15LU60N4 at 230 V three phase  53.1 lbf.in (6 N.m) LXM15LD13M3 at 230 V three phase  46.9 lbf.in (5.3 N.m) LXM15LD10N4 at 230 V three phase  46.9 lbf.in (5.3 N.m) LXM15LD10N4 at 400 V three phase  46.9 lbf.in (5.3 N.m) LXM15LD10N4 at 480 V three phase  68.23 lbf.in (7.71 N.m) LXM15LD17N4 at 230 V three phase  68.23 lbf.in (7.71 N.m) LXM15LD17N4 at 400 V three phase  68.23 lbf.in (7.71 N.m) LXM15LD17N4 at 480 V three phase  82.12 lbf.in (9.28 N.m) LXM15LD21M3 at 230 V three phase  63.36 lbf.in (7.16 N.m) LXM05AD17M3X at 200...240 V three phase  77.43 lbf.in (8.75 N.m) LXM05AD22N4 at 380...480 V three phase  63.36 lbf.in (7.16 N.m) LXM05BD17M3X at 200...240 V three phase  77.43 lbf.in (8.75 N.m) LXM05BD22N4 at 380...480 V three phase  63.36 lbf.in (7.16 N.m) LXM05CD17M3X at 200...240 V three phase  77.43 lbf.in (8.75 N.m) LXM05CD22N4 at 380...480 V three phase</p>
Nominal output power	<p>1300 W for LXM32.D18N4 6 A at 400 V three phase  1300 W for LXM32.D18N4 6 A at 480 V three phase  750 W LXM05AD17M2 at 200...240 V single phase  750 W LXM05AD28M2 at 200...240 V single phase  750 W LXM05BD17M2 at 200...240 V single phase  750 W LXM05BD28M2 at 200...240 V single phase  750 W LXM05CD17M2 at 200...240 V single phase  750 W LXM05CD28M2 at 200...240 V single phase  750 W LXM15LD21M3 at 230 V single phase  1250 W LXM15LD10N4 at 400 V three phase  1300 W LXM15LD17N4 at 400 V three phase  1400 W LXM15LD17N4 at 480 V three phase  1500 W LXM15LD10N4 at 480 V three phase  350 W LXM15LU60N4 at 230 V three phase  700 W LXM15LD13M3 at 230 V three phase  700 W LXM15LU60N4 at 400 V three phase  750 W LXM05AD17M3X at 200...240 V three phase  750 W LXM05AD22N4 at 380...480 V three phase  750 W LXM05BD17M3X at 200...240 V three phase  750 W LXM05BD22N4 at 380...480 V three phase  750 W LXM05CD17M3X at 200...240 V three phase  750 W LXM05CD22N4 at 380...480 V three phase  750 W LXM15LD10N4 at 230 V three phase  750 W LXM15LD17N4 at 230 V three phase  750 W LXM15LD21M3 at 230 V three phase  950 W LXM15LU60N4 at 480 V three phase</p>
Nominal torque	<p>19.73 lbf.in (2.23 N.m) LXM15LD13M3 at 230 V three phase  21.24 lbf.in (2.4 N.m) LXM15LD10N4 at 230 V three phase  21.59 lbf.in (2.44 N.m) for LXM32.D18N4 6 A at 400 V three phase  21.59 lbf.in (2.44 N.m) for LXM32.D18N4 6 A at 480 V three phase  21.24 lbf.in (2.4 N.m) LXM05AD17M2 at 200...240 V single phase  21.24 lbf.in (2.4 N.m) LXM05AD28M2 at 200...240 V single phase  21.24 lbf.in (2.4 N.m) LXM05BD17M2 at 200...240 V single phase  21.24 lbf.in (2.4 N.m) LXM05BD28M2 at 200...240 V single phase  21.24 lbf.in (2.4 N.m) LXM05CD17M2 at 200...240 V single phase  21.24 lbf.in (2.4 N.m) LXM05CD28M2 at 200...240 V single phase  21.24 lbf.in (2.4 N.m) LXM15LD21M3 at 230 V single phase  9.91 lbf.in (1.12 N.m) LXM15LU60N4 at 230 V three phase  9.91 lbf.in (1.12 N.m) LXM15LU60N4 at 400 V three phase  9.91 lbf.in (1.12 N.m) LXM15LU60N4 at 480 V three phase  15.93 lbf.in (1.8 N.m) LXM15LD10N4 at 480 V three phase  17.35 lbf.in (1.96 N.m) LXM15LD17N4 at 480 V three phase  17.7 lbf.in (2 N.m) LXM15LD10N4 at 400 V three phase  17.7 lbf.in (2 N.m) LXM15LD17N4 at 400 V three phase  21.24 lbf.in (2.4 N.m) LXM05AD17M3X at 200...240 V three phase  21.24 lbf.in (2.4 N.m) LXM05AD22N4 at 380...480 V three phase  21.24 lbf.in (2.4 N.m) LXM05BD17M3X at 200...240 V three phase  21.24 lbf.in (2.4 N.m) LXM05BD22N4 at 380...480 V three phase  21.24 lbf.in (2.4 N.m) LXM05CD17M3X at 200...240 V three phase  21.24 lbf.in (2.4 N.m) LXM05CD22N4 at 380...480 V three phase  21.24 lbf.in (2.4 N.m) LXM15LD17N4 at 230 V three phase  21.24 lbf.in (2.4 N.m) LXM15LD21M3 at 230 V three phase</p>
Nominal speed	<p>5000 rpm for LXM32.D18N4 6 A at 400 V three phase  5000 rpm for LXM32.D18N4 6 A at 480 V three phase  3000 rpm LXM05AD17M2 at 200...240 V single phase  3000 rpm LXM05AD28M2 at 200...240 V single phase</p>

3000 rpm LXM05BD17M2 at 200...240 V single phase  
 3000 rpm LXM05BD28M2 at 200...240 V single phase  
 3000 rpm LXM05CD17M2 at 200...240 V single phase  
 3000 rpm LXM05CD28M2 at 200...240 V single phase  
 3000 rpm LXM15LD21M3 at 230 V single phase  
 3000 rpm LXM15LD13M3 at 230 V three phase  
 3000 rpm LXM05AD17M3X at 200...240 V three phase  
 3000 rpm LXM05BD17M3X at 200...240 V three phase  
 3000 rpm LXM05CD17M3X at 200...240 V three phase  
 3000 rpm LXM15LU60N4 at 230 V three phase  
 8000 rpm LXM15LD10N4 at 480 V three phase  
 8000 rpm LXM15LU60N4 at 480 V three phase  
 3000 rpm LXM15LD10N4 at 230 V three phase  
 6000 rpm LXM15LD10N4 at 400 V three phase  
 3000 rpm LXM05AD22N4 at 380...480 V three phase  
 3000 rpm LXM05BD22N4 at 380...480 V three phase  
 3000 rpm LXM05CD22N4 at 380...480 V three phase  
 3000 rpm LXM15LD17N4 at 230 V three phase  
 3000 rpm LXM15LD21M3 at 230 V three phase  
 6000 rpm LXM15LD17N4 at 400 V three phase  
 6000 rpm LXM15LU60N4 at 400 V three phase  
 7000 rpm LXM15LD17N4 at 480 V three phase

Product compatibility	LXM05AD17M2 at 200...240 V single phase LXM05AD28M2 at 200...240 V single phase LXM05BD17M2 at 200...240 V single phase LXM05BD28M2 at 200...240 V single phase LXM05CD17M2 at 200...240 V single phase LXM05CD28M2 at 200...240 V single phase LXM15LD21M3 at 230 V single phase LXM15LU60N4 at 230 V three phase LXM15LD13M3 at 230 V three phase LXM15LU60N4 at 400 V three phase LXM15LU60N4 at 480 V three phase LXM15LD10N4 at 400 V three phase LXM05AD17M3X at 200...240 V three phase LXM05BD17M3X at 200...240 V three phase LXM05CD17M3X at 200...240 V three phase LXM15LD10N4 at 230 V three phase LXM15LD10N4 at 480 V three phase LXM15LD21M3 at 230 V three phase LXM15LD17N4 at 230 V three phase LXM05AD22N4 at 380...480 V three phase LXM05BD22N4 at 380...480 V three phase LXM05CD22N4 at 380...480 V three phase LXM15LD17N4 at 400 V three phase LXM15LD17N4 at 480 V three phase LXM32.D18N4 at 400 V three phase LXM32.D18N4 at 480 V three phase
Shaft end	Keyed
IP degree of protection	IP65 (standard) IP67 (with IP67 kit)
Speed feedback resolution	131072 points/turn x 4096 turns
Holding brake	Without
Mounting support	International standard flange
Electrical connection	Rotatable right-angled connectors

## Complementary

Range compatibility	Lexium 05 Lexium 15 Lexium 32
Supply voltage max	480 V
Phase	Three phase
Continuous stall current	4.1 A
Maximum continuous power	1.7 W
Maximum current Irms	17 A LXM05AD17M2 17 A LXM05AD17M3X 17 A LXM05AD22N4 17 A LXM05AD28M2 17 A LXM05BD17M2

17 A LXM05BD17M3X  
 17 A LXM05BD22N4  
 17 A LXM05BD28M2  
 17 A LXM05CD17M2  
 17 A LXM05CD17M3X  
 17 A LXM05CD22N4  
 17 A LXM05CD28M2  
 15.2 A LXM15LD10N4  
 15.2 A LXM15LD13M3  
 15.2 A LXM15LD17N4  
 15.2 A LXM15LD21M3  
 15.2 A LXM15LU60N4  
 17 A LXM32.D18N4

Maximum permanent current	17 A
Switching frequency	8 kHz
Second shaft	Without second shaft end
Shaft diameter	0.55 in (14 mm)
Shaft length	1.18 in (30 mm)
Key width	0.79 in (20 mm)
Feedback type	Multiturn SinCos Hiperface
Motor flange size	2.76 in (70 mm)
Number of motor stacks	3
Torque constant	0.78 N.m/A at 248 °F (120 °C)
Back emf constant	49 V/krpm at 248 °F (120 °C)
Number of motor poles	6
Rotor inertia	0.58 kg.cm <sup>2</sup>
Stator resistance	2.7 Ohm at 68 °F (20 °C)
Stator inductance	13 mH at 68 °F (20 °C)
Stator electrical time constant	4.82 ms at 68 °F (20 °C)
Maximum radial force Fr	400 N at 6000 rpm 430 N at 5000 rpm 460 N at 4000 rpm 510 N at 3000 rpm 580 N at 2000 rpm 730 N at 1000 rpm
Maximum axial force Fa	0.2 x Fr
Type of cooling	Natural convection
Length	8.66 in (220 mm)
Centring collar diameter	2.36 in (60 mm)
Centring collar depth	0.1 in (2.5 mm)
Number of mounting holes	4
Mounting holes diameter	0.22 in (5.5 mm)
Circle diameter of the mounting holes	3.23 in (82 mm)
Product weight	7.98 lb(US) (3.62 kg)

## Ordering and shipping details

Category	18282 - LEXIUM 32 MOTORS
Discount Schedule	PC53
GTIN	003389118137417
Nbr. of units in pkg.	1
Package weight(Lbs)	7.9000000000000004
Returnability	N
Country of origin	DE

## Offer Sustainability

Sustainable offer status	Green Premium product
RoHS (date code: YYWW)	Compliant

 [Schneider Electric declaration of conformity](#)

REACH	Reference not containing SVHC above the threshold <a href="#">Reference not containing SVHC above the threshold</a>
Product environmental profile	Available
Product end of life instructions	Need no specific recycling operations
California proposition 65	WARNING: This product can expose you to chemicals including:
- - - - - Substance 1	Lead and lead compounds, which is known to the State of California to cause cancer and birth defects or other reproductive harm.
- - - - - More information	For more information go to <a href="http://www.p65warnings.ca.gov">www.p65warnings.ca.gov</a>

[Contractual warranty](#)

Warranty period	18 months
-----------------	-----------