

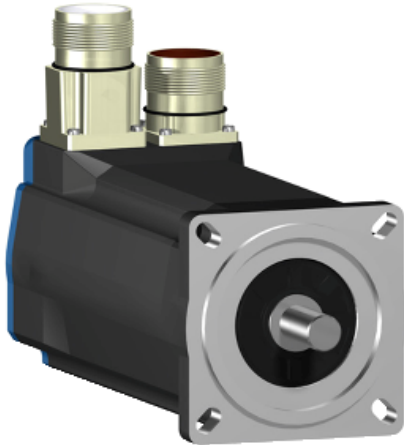
# BSH0703P22A2A

AC servo motor BSH - 1.1 N.m - 3000 rpm -  
untapped shaft - without brake - IP65

Product availability : Non-Stock - Not normally stocked in distribution facility



Price\* : 1,555.00 USD



## Main

|                           |   |
|---------------------------|---|
| Product or component type | Servo motor   |
| Device short name         | BSH   |
| Maximum mechanical speed  | 8000 rpm  |
| Continuous stall torque   | <p>27.43 lbf.in (3.1 N.m) for LXM32.D18N4 6 A at 400 V three phase</p> <p>27.43 lbf.in (3.1 N.m) for LXM32.D18N4 6 A at 480 V three phase</p> <p>25.04 lbf.in (2.83 N.m) LXM15LD21M3 at 230 V single phase</p> <p>24.78 lbf.in (2.8 N.m) LXM05AD17M2 at 200...240 V single phase</p> <p>24.78 lbf.in (2.8 N.m) LXM05AD28M2 at 200...240 V single phase</p> <p>24.78 lbf.in (2.8 N.m) LXM05BD17M2 at 200...240 V single phase</p> <p>24.78 lbf.in (2.8 N.m) LXM05BD28M2 at 200...240 V single phase</p> <p>24.78 lbf.in (2.8 N.m) LXM05CD17M2 at 200...240 V single phase</p> <p>24.78 lbf.in (2.8 N.m) LXM05CD28M2 at 200...240 V single phase</p> <p>9.73 lbf.in (1.1 N.m) LXM15LU60N4 at 480 V three phase</p> <p>9.73 lbf.in (1.1 N.m) LXM15LU60N4 at 400 V three phase</p> <p>13.27 lbf.in (1.5 N.m) LXM15LU60N4 at 230 V three phase</p> <p>19.73 lbf.in (2.23 N.m) LXM15LD13M3 at 230 V three phase</p> <p>21.24 lbf.in (2.4 N.m) LXM15LD10N4 at 230 V three phase</p> <p>21.24 lbf.in (2.4 N.m) LXM15LD10N4 at 400 V three phase</p> <p>21.24 lbf.in (2.4 N.m) LXM15LD10N4 at 480 V three phase</p> <p>25.04 lbf.in (2.83 N.m) LXM15LD17N4 at 230 V three phase</p> <p>25.04 lbf.in (2.83 N.m) LXM15LD17N4 at 400 V three phase</p> <p>25.04 lbf.in (2.83 N.m) LXM15LD17N4 at 480 V three phase</p> <p>25.04 lbf.in (2.83 N.m) LXM15LD21M3 at 230 V three phase</p> <p>24.78 lbf.in (2.8 N.m) LXM05AD17M3X at 200...240 V three phase</p> <p>24.78 lbf.in (2.8 N.m) LXM05AD22N4 at 380...480 V three phase</p> <p>24.78 lbf.in (2.8 N.m) LXM05BD17M3X at 200...240 V three phase</p> <p>24.78 lbf.in (2.8 N.m) LXM05BD22N4 at 380...480 V three phase</p> <p>24.78 lbf.in (2.8 N.m) LXM05CD17M3X at 200...240 V three phase</p> <p>24.78 lbf.in (2.8 N.m) LXM05CD22N4 at 380...480 V three phase</p> |
| Peak stall torque         | <p>100 lbf.in (11.3 N.m) for LXM32.D18N4 6 A at 400 V three phase</p> <p>100 lbf.in (11.3 N.m) for LXM32.D18N4 6 A at 480 V three phase</p> <p>53.01 lbf.in (5.99 N.m) LXM15LD21M3 at 230 V single phase</p> <p>63.36 lbf.in (7.16 N.m) LXM05AD17M2 at 200...240 V single phase</p> <p>91.15 lbf.in (10.3 N.m) LXM05AD28M2 at 200...240 V single phase</p> <p>63.36 lbf.in (7.16 N.m) LXM05BD17M2 at 200...240 V single phase</p> <p>91.15 lbf.in (10.3 N.m) LXM05BD28M2 at 200...240 V single phase</p>  |

Disclaimer: This documentation is not intended as a substitute for and is not to be used for determining suitability or reliability of these products for specific user applications

|                      |   |
|----------------------|---|
|                      | <p>63.36 lbf.in (7.16 N.m) LXM05CD17M2 at 200...240 V single phase<br/> 91.15 lbf.in (10.3 N.m) LXM05CD28M2 at 200...240 V single phase<br/> 29.2 lbf.in (3.3 N.m) LXM15LU60N4 at 480 V three phase<br/> 29.2 lbf.in (3.3 N.m) LXM15LU60N4 at 400 V three phase<br/> 29.2 lbf.in (3.3 N.m) LXM15LU60N4 at 230 V three phase<br/> 53.1 lbf.in (6 N.m) LXM15LD13M3 at 230 V three phase<br/> 46.9 lbf.in (5.3 N.m) LXM15LD10N4 at 230 V three phase<br/> 46.9 lbf.in (5.3 N.m) LXM15LD10N4 at 400 V three phase<br/> 46.9 lbf.in (5.3 N.m) LXM15LD10N4 at 480 V three phase<br/> 68.23 lbf.in (7.71 N.m) LXM15LD17N4 at 230 V three phase<br/> 68.23 lbf.in (7.71 N.m) LXM15LD17N4 at 400 V three phase<br/> 68.23 lbf.in (7.71 N.m) LXM15LD17N4 at 480 V three phase<br/> 82.12 lbf.in (9.28 N.m) LXM15LD21M3 at 230 V three phase<br/> 63.36 lbf.in (7.16 N.m) LXM05AD17M3X at 200...240 V three phase<br/> 77.43 lbf.in (8.75 N.m) LXM05AD22N4 at 380...480 V three phase<br/> 63.36 lbf.in (7.16 N.m) LXM05BD17M3X at 200...240 V three phase<br/> 77.43 lbf.in (8.75 N.m) LXM05BD22N4 at 380...480 V three phase<br/> 63.36 lbf.in (7.16 N.m) LXM05CD17M3X at 200...240 V three phase<br/> 77.43 lbf.in (8.75 N.m) LXM05CD22N4 at 380...480 V three phase</p>  |
| Nominal output power | <p>1300 W for LXM32.D18N4 6 A at 400 V three phase<br/> 1300 W for LXM32.D18N4 6 A at 480 V three phase<br/> 750 W LXM05AD17M2 at 200...240 V single phase<br/> 750 W LXM05AD28M2 at 200...240 V single phase<br/> 750 W LXM05BD17M2 at 200...240 V single phase<br/> 750 W LXM05BD28M2 at 200...240 V single phase<br/> 750 W LXM05CD17M2 at 200...240 V single phase<br/> 750 W LXM05CD28M2 at 200...240 V single phase<br/> 750 W LXM15LD21M3 at 230 V single phase<br/> 1250 W LXM15LD10N4 at 400 V three phase<br/> 1300 W LXM15LD17N4 at 400 V three phase<br/> 1400 W LXM15LD17N4 at 480 V three phase<br/> 1500 W LXM15LD10N4 at 480 V three phase<br/> 350 W LXM15LU60N4 at 230 V three phase<br/> 700 W LXM15LD13M3 at 230 V three phase<br/> 700 W LXM15LU60N4 at 400 V three phase<br/> 750 W LXM05AD17M3X at 200...240 V three phase<br/> 750 W LXM05AD22N4 at 380...480 V three phase<br/> 750 W LXM05BD17M3X at 200...240 V three phase<br/> 750 W LXM05BD22N4 at 380...480 V three phase<br/> 750 W LXM05CD17M3X at 200...240 V three phase<br/> 750 W LXM05CD22N4 at 380...480 V three phase<br/> 750 W LXM15LD10N4 at 230 V three phase<br/> 750 W LXM15LD17N4 at 230 V three phase<br/> 750 W LXM15LD21M3 at 230 V three phase<br/> 950 W LXM15LU60N4 at 480 V three phase</p>   |
| Nominal torque       | <p>19.73 lbf.in (2.23 N.m) LXM15LD13M3 at 230 V three phase<br/> 21.24 lbf.in (2.4 N.m) LXM15LD10N4 at 230 V three phase<br/> 21.59 lbf.in (2.44 N.m) for LXM32.D18N4 6 A at 400 V three phase<br/> 21.59 lbf.in (2.44 N.m) for LXM32.D18N4 6 A at 480 V three phase<br/> 21.24 lbf.in (2.4 N.m) LXM05AD17M2 at 200...240 V single phase<br/> 21.24 lbf.in (2.4 N.m) LXM05AD28M2 at 200...240 V single phase<br/> 21.24 lbf.in (2.4 N.m) LXM05BD17M2 at 200...240 V single phase<br/> 21.24 lbf.in (2.4 N.m) LXM05BD28M2 at 200...240 V single phase<br/> 21.24 lbf.in (2.4 N.m) LXM05CD17M2 at 200...240 V single phase<br/> 21.24 lbf.in (2.4 N.m) LXM05CD28M2 at 200...240 V single phase<br/> 21.24 lbf.in (2.4 N.m) LXM15LD21M3 at 230 V single phase<br/> 9.91 lbf.in (1.12 N.m) LXM15LU60N4 at 230 V three phase<br/> 9.91 lbf.in (1.12 N.m) LXM15LU60N4 at 400 V three phase<br/> 9.91 lbf.in (1.12 N.m) LXM15LU60N4 at 480 V three phase<br/> 15.93 lbf.in (1.8 N.m) LXM15LD10N4 at 480 V three phase<br/> 17.35 lbf.in (1.96 N.m) LXM15LD17N4 at 480 V three phase<br/> 17.7 lbf.in (2 N.m) LXM15LD10N4 at 400 V three phase<br/> 17.7 lbf.in (2 N.m) LXM15LD17N4 at 400 V three phase<br/> 21.24 lbf.in (2.4 N.m) LXM05AD17M3X at 200...240 V three phase<br/> 21.24 lbf.in (2.4 N.m) LXM05AD22N4 at 380...480 V three phase<br/> 21.24 lbf.in (2.4 N.m) LXM05BD17M3X at 200...240 V three phase<br/> 21.24 lbf.in (2.4 N.m) LXM05BD22N4 at 380...480 V three phase<br/> 21.24 lbf.in (2.4 N.m) LXM05CD17M3X at 200...240 V three phase<br/> 21.24 lbf.in (2.4 N.m) LXM05CD22N4 at 380...480 V three phase<br/> 21.24 lbf.in (2.4 N.m) LXM15LD17N4 at 230 V three phase<br/> 21.24 lbf.in (2.4 N.m) LXM15LD21M3 at 230 V three phase</p> |
| Nominal speed        | <p>5000 rpm for LXM32.D18N4 6 A at 400 V three phase<br/> 5000 rpm for LXM32.D18N4 6 A at 480 V three phase<br/> 3000 rpm LXM05AD17M2 at 200...240 V single phase<br/> 3000 rpm LXM05AD28M2 at 200...240 V single phase</p>   |

3000 rpm LXM05BD17M2 at 200...240 V single phase  
 3000 rpm LXM05BD28M2 at 200...240 V single phase  
 3000 rpm LXM05CD17M2 at 200...240 V single phase  
 3000 rpm LXM05CD28M2 at 200...240 V single phase  
 3000 rpm LXM15LD21M3 at 230 V single phase  
 3000 rpm LXM15LD13M3 at 230 V three phase  
 3000 rpm LXM05AD17M3X at 200...240 V three phase  
 3000 rpm LXM05BD17M3X at 200...240 V three phase  
 3000 rpm LXM05CD17M3X at 200...240 V three phase  
 3000 rpm LXM15LU60N4 at 230 V three phase  
 8000 rpm LXM15LD10N4 at 480 V three phase  
 8000 rpm LXM15LU60N4 at 480 V three phase  
 3000 rpm LXM15LD10N4 at 230 V three phase  
 6000 rpm LXM15LD10N4 at 400 V three phase  
 3000 rpm LXM05AD22N4 at 380...480 V three phase  
 3000 rpm LXM05BD22N4 at 380...480 V three phase  
 3000 rpm LXM05CD22N4 at 380...480 V three phase  
 3000 rpm LXM15LD17N4 at 230 V three phase  
 3000 rpm LXM15LD21M3 at 230 V three phase  
 6000 rpm LXM15LD17N4 at 400 V three phase  
 6000 rpm LXM15LU60N4 at 400 V three phase  
 7000 rpm LXM15LD17N4 at 480 V three phase

|                           |  |
|---------------------------|--|
| Product compatibility     | LXM05AD17M2 at 200...240 V single phase<br>LXM05AD28M2 at 200...240 V single phase<br>LXM05BD17M2 at 200...240 V single phase<br>LXM05BD28M2 at 200...240 V single phase<br>LXM05CD17M2 at 200...240 V single phase<br>LXM05CD28M2 at 200...240 V single phase<br>LXM15LD21M3 at 230 V single phase<br>LXM15LU60N4 at 230 V three phase<br>LXM15LD13M3 at 230 V three phase<br>LXM15LU60N4 at 400 V three phase<br>LXM15LU60N4 at 480 V three phase<br>LXM15LD10N4 at 400 V three phase<br>LXM05AD17M3X at 200...240 V three phase<br>LXM05BD17M3X at 200...240 V three phase<br>LXM05CD17M3X at 200...240 V three phase<br>LXM15LD10N4 at 230 V three phase<br>LXM15LD10N4 at 480 V three phase<br>LXM15LD21M3 at 230 V three phase<br>LXM15LD17N4 at 230 V three phase<br>LXM05AD22N4 at 380...480 V three phase<br>LXM05BD22N4 at 380...480 V three phase<br>LXM05CD22N4 at 380...480 V three phase<br>LXM15LD17N4 at 400 V three phase<br>LXM15LD17N4 at 480 V three phase<br>LXM32.D18N4 at 400 V three phase<br>LXM32.D18N4 at 480 V three phase |
| Shaft end                 | Untapped   |
| IP degree of protection   | IP65 (standard)<br>IP67 (with IP67 kit)  |
| Speed feedback resolution | 131072 points/turn x 4096 turns  |
| Holding brake             | Without  |
| Mounting support          | International standard flange  |
| Electrical connection     | Rotatable right-angled connectors  |

## Complementary

|                          |   |
|--------------------------|---|
| Range compatibility      | Lexium 05<br>Lexium 15<br>Lexium 32   |
| Supply voltage max       | 480 V   |
| Phase                    | Three phase   |
| Continuous stall current | 4.1 A   |
| Maximum continuous power | 1.7 W   |
| Maximum current Irms     | 17 A LXM05AD17M2<br>17 A LXM05AD17M3X<br>17 A LXM05AD22N4<br>17 A LXM05AD28M2<br>17 A LXM05BD17M2 |


17 A LXM05BD17M3X  
 17 A LXM05BD22N4  
 17 A LXM05BD28M2  
 17 A LXM05CD17M2  
 17 A LXM05CD17M3X  
 17 A LXM05CD22N4  
 17 A LXM05CD28M2  
 15.2 A LXM15LD10N4  
 15.2 A LXM15LD13M3  
 15.2 A LXM15LD17N4  
 15.2 A LXM15LD21M3  
 15.2 A LXM15LU60N4  
 17 A LXM32.D18N4

|                                       |  |
|---------------------------------------|--|
| Maximum permanent current             | 17 A   |
| Switching frequency                   | 8 kHz  |
| Second shaft                          | Without second shaft end   |
| Shaft diameter                        | 0.55 in (14 mm)  |
| Shaft length                          | 1.18 in (30 mm)  |
| Feedback type                         | Multiturn SinCos Hiperface   |
| Motor flange size                     | 2.76 in (70 mm)  |
| Number of motor stacks                | 3  |
| Torque constant                       | 0.78 N.m/A at 248 °F (120 °C)  |
| Back emf constant                     | 49 V/krpm at 248 °F (120 °C)   |
| Number of motor poles                 | 6  |
| Rotor inertia                         | 0.58 kg.cm <sup>2</sup>  |
| Stator resistance                     | 2.7 Ohm at 68 °F (20 °C)   |
| Stator inductance                     | 13 mH at 68 °F (20 °C)   |
| Stator electrical time constant       | 4.82 ms at 68 °F (20 °C)   |
| Maximum radial force Fr               | 400 N at 6000 rpm<br>430 N at 5000 rpm<br>460 N at 4000 rpm<br>510 N at 3000 rpm<br>580 N at 2000 rpm<br>730 N at 1000 rpm |
| Maximum axial force Fa                | 0.2 x Fr   |
| Type of cooling                       | Natural convection   |
| Length                                | 8.66 in (220 mm)   |
| Centring collar diameter              | 2.36 in (60 mm)  |
| Centring collar depth                 | 0.1 in (2.5 mm)  |
| Number of mounting holes              | 4  |
| Mounting holes diameter               | 0.22 in (5.5 mm)   |
| Circle diameter of the mounting holes | 3.23 in (82 mm)  |
| Product weight                        | 7.98 lb(US) (3.62 kg)  |

## Ordering and shipping details

|                       |                          |
|-----------------------|--------------------------|
| Category              | 18282 - LEXIUM 32 MOTORS |
| Discount Schedule     | PC53                     |
| GTIN                  | 003389118137332          |
| Nbr. of units in pkg. | 1                        |
| Package weight(Lbs)   | 7.9000000000000004       |
| Returnability         | N                        |
| Country of origin     | DE                       |

## Offer Sustainability

|                          |  |
|--------------------------|--|
| Sustainable offer status | Green Premium product  |
| RoHS (date code: YYWW)   | Compliant  |
|                          |  <a href="#">Schneider Electric declaration of conformity</a> |

|                                  |  |
|----------------------------------|--|
| REACH                            | Reference not containing SVHC above the threshold<br>Reference not containing SVHC above the threshold                           |
| Product environmental profile    | Available  |
| Product end of life instructions | Need no specific recycling operations  |
| California proposition 65        | WARNING: This product can expose you to chemicals including:   |
| - - - - - Substance 1            | Lead and lead compounds, which is known to the State of California to cause cancer and birth defects or other reproductive harm. |
| - - - - - More information       | For more information go to <a href="http://www.p65warnings.ca.gov">www.p65warnings.ca.gov</a>                                    |

### Contractual warranty

|                 |           |
|-----------------|-----------|
| Warranty period | 18 months |
|-----------------|-----------|