

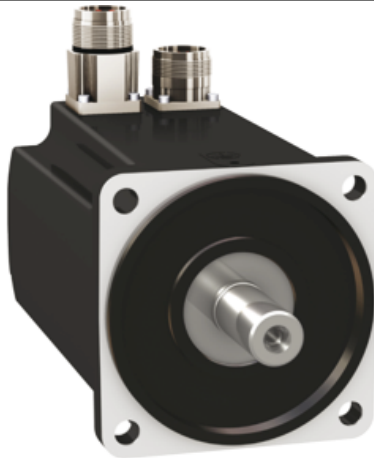
# BMH1001T02A1A

servo motor BMH - 3.4 Nm - 6000 rpm - untapped shaft - without brake - IP54

Product availability : Non-Stock - Not normally stocked in distribution facility



Price\* : 1,440.00 USD



## Main

Product or component type	Servo motor
Device short name	BMH
Maximum mechanical speed	6000 rpm
Continuous stall torque	30.09 lbf.in (3.4 N.m) for LXM32.D30M2 10 A at 115 V single phase 30.09 lbf.in (3.4 N.m) for LXM32.D18M2 6 A at 230 V single phase
Peak stall torque	90.27 lbf.in (10.2 N.m) for LXM32.D18M2 6 A at 230 V single phase 78.76 lbf.in (8.9 N.m) for LXM32.D30M2 10 A at 115 V single phase
Nominal output power	900 W for LXM32.D18M2 6 A at 230 V single phase 700 W LXM32.D30M2 10 A at 115 V single phase
Nominal torque	29.2 lbf.in (3.3 N.m) for LXM32.D30M2 10 A at 115 V single phase 24.78 lbf.in (2.8 N.m) for LXM32.D18M2 6 A at 230 V single phase
Nominal speed	2000 rpm for LXM32.D30M2 10 A at 115 V single phase 3000 rpm for LXM32.D18M2 6 A at 230 V single phase
Product compatibility	LXM32.D30M2 at 115 V single phase LXM32.D18M2 at 230 V single phase
Shaft end	Smooth shaft
IP degree of protection	IP54 (standard)
Speed feedback resolution	131072 points/turn x 4096 turns
Holding brake	Without
Mounting support	International standard flange
Electrical connection	Straight connectors

## Complementary

Range compatibility	Lexium 32
[Us] rated supply voltage	240 V
Phase	Three phase
Continuous stall current	5.11 A
Continuous power	1.74 W

Maximum current Irms	15 A LXM32.D30M2 19.4 A for LXM32.D18M2
Maximum permanent current	19.38 A
Second shaft	Without second shaft end
Shaft diameter	0.75 in (19 mm)
Shaft length	1.57 in (40 mm)
Feedback type	Multiturn SinCos Hiperface
Motor flange size	3.94 in (100 mm)
Number of motor stacks	1
Torque constant	0.67 N.m/A at 248 °F (120 °C)
Back emf constant	43.3 V/krpm at 248 °F (120 °C)
Number of motor poles	10
Rotor inertia	3.19 kg.cm <sup>2</sup>
Stator resistance	1.19 Ohm at 68 °F (20 °C)
Stator inductance	5.3 mH at 68 °F (20 °C)
Stator electrical time constant	4.5 ms at 68 °F (20 °C)
Maximum radial force Fr	530 N at 5000 rpm 570 N at 4000 rpm 630 N at 3000 rpm 720 N at 2000 rpm 900 N at 1000 rpm
Maximum axial force Fa	0.2 x Fr
Type of cooling	Natural convection
Length	5.06 in (128.6 mm)
Centring collar diameter	3.74 in (95 mm)
Centring collar depth	0.14 in (3.5 mm)
Number of mounting holes	4
Mounting holes diameter	0.35 in (9 mm)
Circle diameter of the mounting holes	4.53 in (115 mm)
Product weight	7.36 lb(US) (3.34 kg)

## Ordering and shipping details

Category	18282 - LEXIUM 32 MOTORS
Discount Schedule	PC53
GTIN	003606485196824
Nbr. of units in pkg.	1
Package weight(Lbs)	8.700000000000011
Returnability	N
Country of origin	DE

## Offer Sustainability

Sustainable offer status	Green Premium product
RoHS (date code: YYWW)	Compliant - since 0936 - Schneider Electric declaration of conformity <a href="#">Schneider Electric declaration of conformity</a>
REACH	Reference not containing SVHC above the threshold <a href="#">Reference not containing SVHC above the threshold</a>
Product environmental profile	Available
Product end of life instructions	Need no specific recycling operations
California proposition 65	WARNING: This product can expose you to chemicals including:
----- Substance 1	Lead and lead compounds, which is known to the State of California to cause cancer and birth defects or other reproductive harm.
----- More information	For more information go to <a href="http://www.p65warnings.ca.gov">www.p65warnings.ca.gov</a>

## Contractual warranty

---

Warranty period	18 months
-----------------	-----------

---