

# Product data sheet

## Characteristics

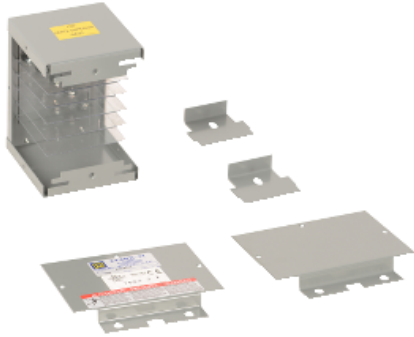
# ACF58EC

End Closure - I-Line - end caps - 1350A - Cu -  
6.34x1.00x7.06in

Product availability : Non-Stock - Not normally stocked in distribution facility



Price\* : 446.00 USD



### Main

Product	End Closure
Range	I-Line

### Complementary

System Voltage	600 V AC/DC 50/60 Hz
Length	6.34 in
Height	7.06 in
Width	1 in
For Use with	Busbar trunking 1350 A copper end caps

### Environment

Standards	UL 857 IEC 61439-6 CSA C22.2 No 27 1994
-----------	---

### Ordering and shipping details

Category	20199 - WALL FLANGES/END CLOSURES
Discount Schedule	PE8
GTIN	00785901816126
Nbr. of units in pkg.	1
Package weight(Lbs)	4.9500000000000002
Returnability	Y
Country of origin	US

## Offer Sustainability

Sustainable offer status	Green Premium product
RoHS (date code: YYWW)	Compliant <a href="#">Schneider Electric declaration of conformity</a>
REACH	Reference not containing SVHC above the threshold <a href="#">Reference not containing SVHC above the threshold</a>
Product environmental profile	Available
Product end of life instructions	Need no specific recycling operations
California proposition 65	WARNING: This product can expose you to chemicals including:
----- Substance 1	Nickel compounds, which is known to the State of California to cause cancer, and
----- Substance 2	Bisphenol A (BPA), which is known to the State of California to cause birth defects or other reproductive harm.
----- More information	For more information go to <a href="http://www.p65warnings.ca.gov">www.p65warnings.ca.gov</a>

## Contractual warranty

Warranty period	18 months
-----------------	-----------