

ABE7B20MPN20

connection sub-base ABE7 - for Twido modular
base - 12 inputs 8 outputs

Product availability : Non-Stock - Not normally stocked in distribution facility



Price* : 117.00 USD



Main

Range of product	Advantys Telefast ABE7
Product or component type	Passive discrete I/O sub-base
[Us] rated supply voltage	24 V DC (controller side) 24 V DC (sensor/controller side)
Number of channels	20
Number of terminal per channel	2
Connections - terminals	Screw type terminals, clamping capacity: 1 x 0.09...1 x 1.5 mm ² AWG 28...AWG 16 flexible with cable end Screw type terminals, clamping capacity: 1 x 0.14...1 x 2.5 mm ² AWG 26...AWG 12 solid Screw type terminals, clamping capacity: 1 x 0.14...1 x 2.5 mm ² AWG 26...AWG 14 flexible without cable end Screw type terminals, clamping capacity: 2 x 0.09...2 x 0.75 mm ² AWG 28...AWG 20 flexible with cable end Screw type terminals, clamping capacity: 2 x 0.2...2 x 2.5 mm ² AWG 28...AWG 16 solid
Connector destination	Twido programmable controller

Complementary

Supply voltage limits	19...30 V DC (controller side) conforming to IEC 61131-2 20.4...26.4 V DC (sensor/controller side) conforming to IEC 61131-2
Discrete input number	12
Discrete input logic	Sink
Discrete output number	8
Discrete output voltage	24 V
Discrete output voltage type	DC
Product compatibility	TWDLMDA20DTK TWDLMDA40DTK
Status LED	1 LED power ON
Polarity distribution	1 common/12 channels input 1 common/8 channels output

Short-circuit protection	2 A internal fuse, 5 x 20 mm, fast blow (controller side)
Connector type	HE-10
Pin number	26 pins
Fixing mode	By clips on 35 mm symmetrical DIN rail conforming to IEC 60715 By screws
Supply current	<= 2 A
Switched current	15 mAfor input circuit 300 mAfor output circuit
Current per output common	2 A
Voltage drop on power supply fuse	0.3 V
[Ui] rated insulation voltage	2000 V between terminals/mounting rails
Overvoltage category	II conforming to IEC 60664-1
Tightening torque	5.31 lbf.in (0.6 N.m) (with flat Ø 3.5 mm)
Product weight	0.95 lb(US) (0.43 kg)

Environment

Standards	IEC 61131-2 Type 1
Product certifications	CSA UL
IP degree of protection	IP2x conforming to IEC 60529
Resistance to incandescent wire	1382 °F (750 °C) conforming to IEC 60695-2-11
Shock resistance	15 gn 11 ms conforming to IEC 60068-2-27
Vibration resistance	2 gn (f = 10...150 Hz) conforming to IEC 60068-2-6
Resistance to electrostatic discharge	4 kV (contact) conforming to IEC 61000-4-2 level 3 8 kV (air) conforming to IEC 61000-4-2 level 3
Resistance to radiated fields	9.14 V/yd (10 V/m) (80000000...2000000000 Hz) conforming to IEC 61000-4-3 level 3
Resistance to fast transients	2 kV conforming to IEC 61000-4-4 level 3
Ambient air temperature for operation	23...140 °F (-5...60 °C) conforming to IEC 61131-2
Ambient air temperature for storage	-40...176 °F (-40...80 °C) conforming to IEC 61131-2
Pollution degree	2 conforming to IEC 60664-1

Ordering and shipping details

Category	22375 - INTERFACE MODULE(ABA,R,S)
Discount Schedule	CP2
GTIN	00785901572244
Nbr. of units in pkg.	1
Package weight(Lbs)	0.7299999999999998
Returnability	N
Country of origin	LV

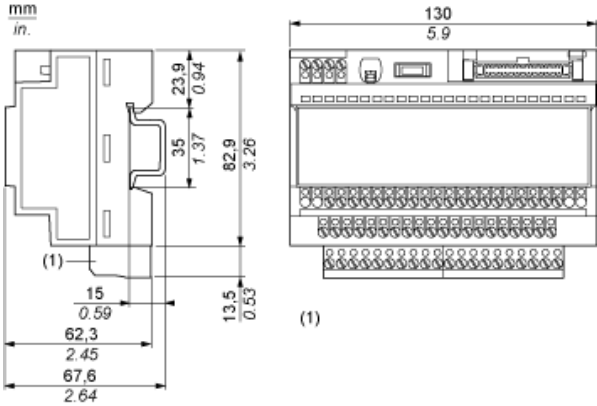
Offer Sustainability

Sustainable offer status	Green Premium product
RoHS (date code: YYWW)	Compliant - since 0841 - Schneider Electric declaration of conformity Schneider Electric declaration of conformity
REACH	Reference not containing SVHC above the threshold Reference not containing SVHC above the threshold
Product environmental profile	Available
Product end of life instructions	Available
California proposition 65	WARNING: This product can expose you to chemicals including:
----- Substance 1	Lead and lead compounds, which is known to the State of California to cause cancer and birth defects or other reproductive harm.
----- More information	For more information go to www.p65warnings.ca.gov

Contractual warranty

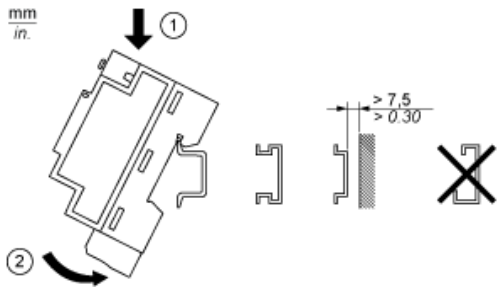
Warranty period	18 months
-----------------	-----------

Dimensions

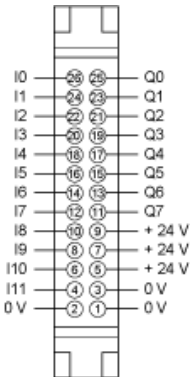


(1) ABE7BV10 / BV20 / BV20TB

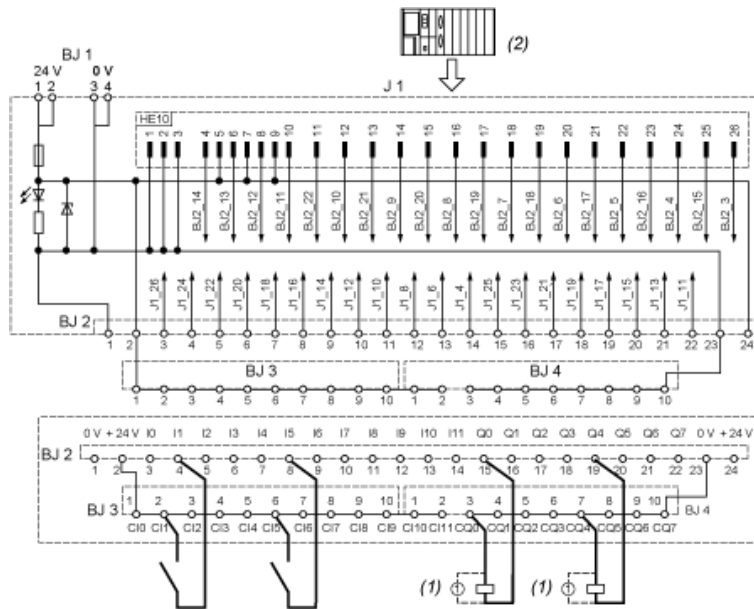
Mounting



HE10 20 Channels

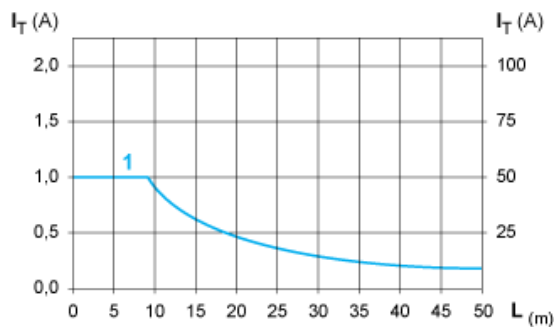


Wiring Diagram



- (1) Inductive load
- (2) Input sink

Curves for Determining Cable Type and Length According to the Current



- L Cable length
- I_T Total current per sub base (A)
- I_A Average current per channel (mA)
- (1) Cables ABFT2••••• c.s.a. 0.08 mm² (AWG 28)

The curves are given for a voltage drop of 1 V in the cable. For n volts tolerance, multiply the length determined from the graph by n.