

# Product data sheet

Specifications



## connection sub-base accessory - redundant input sub-base

ABE7ACC11

Product availability: Non-Stock - Not normally stocked in distribution facility

Price\*: 202.50 USD

### Main

Accessory / Separate Part Designation	Redundant input sub-base
Accessory / Separate Part Destination	PLC
Accessory / Separate Part Category	Connection accessories
Accessory / Separate Part Type	Splitter sub-base
Range Of Product	Modicon ABE7
Sub-Base Type	Redundant input sub-base
Number Of Channels	16
Quantity Per Set	Set of 1

### Complementary

Channel Splitting	2 x 16
Net Weight	0.17 lb(US) (0.075 kg)

### Ordering and shipping details

Category	US10CP222375
Discount Schedule	0CP2
Gtin	3389110864748
Returnability	No
Country Of Origin	LV

### Packing Units

Unit Type Of Package 1	PCE
Number Of Units In Package 1	1
Package 1 Height	2.83 in (7.2 cm)
Package 1 Width	3.15 in (8.0 cm)
Package 1 Length	3.74 in (9.5 cm)
Package 1 Weight	4.34 oz (123.0 g)
Unit Type Of Package 2	S03
Number Of Units In Package 2	24
Package 2 Height	11.81 in (30.0 cm)
Package 2 Width	11.81 in (30.0 cm)

Price is "List Price" and may be subject to a trade discount – check with your local distributor or retailer for actual price.

Disclaimer: This documentation is not intended as a substitute for and is not to be used for determining suitability or reliability of these products for specific user applications

Package 2 Length	15.75 in (40.0 cm)
Package 2 Weight	7.56 lb(US) (3.429 kg)

## Contractual warranty

Warranty	18 months
----------	-----------

## Sustainability




**Green Premium™ label** is Schneider Electric's commitment to delivering products with best-in-class environmental performance. Green Premium promises compliance with the latest regulations, transparency on environmental impacts, as well as circular and low-CO<sub>2</sub> products.

**Guide to assessing product sustainability** is a white paper that clarifies global eco-label standards and how to interpret environmental declarations.

[Learn more about Green Premium >](#)

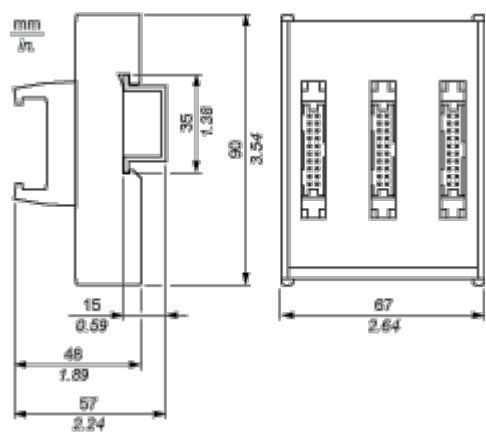
[Guide to assess a product's sustainability >](#)

## Well-being performance

	Reach Free Of Svhc	
	Mercury Free	
	Rohs Exemption Information	Yes
Reach Regulation		<a href="#">REACH Declaration</a>
Eu Rohs Directive		Pro-active compliance (Product out of EU RoHS legal scope)
China Rohs Regulation		<a href="#">China RoHS declaration</a>
Weee		The product must be disposed on European Union markets following specific waste collection and never end up in rubbish bins.
California Proposition 65		WARNING: This product can expose you to chemicals including: Lead and lead compounds, which is known to the State of California to cause cancer and birth defects or other reproductive harm. For more information go to <a href="http://www.P65Warnings.ca.gov">www.P65Warnings.ca.gov</a>

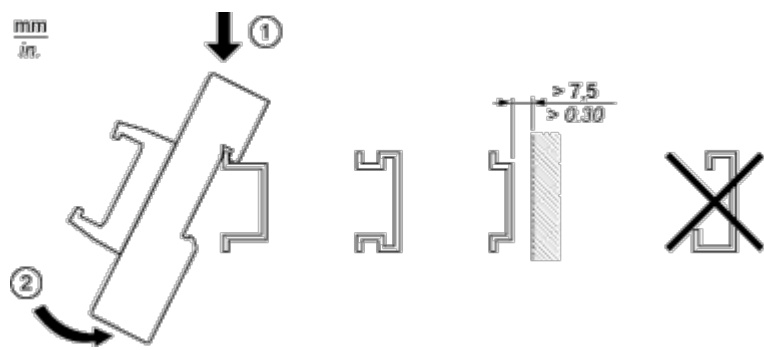
Dimensions Drawings

Dimensions



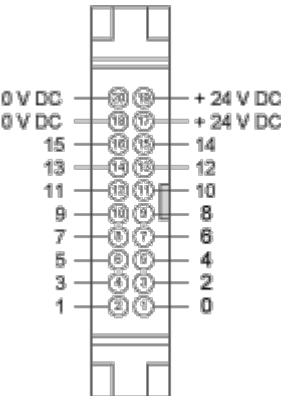
Mounting and Clearance

Mounting



Connections and Schema

HE10 16 Channels



Wiring Diagram

---

