

Product data sheet

Characteristics

ABE7ACC10

connection sub-base accessory - redundant output sub-base

Product availability : Non-Stock - Not normally stocked in distribution facility

Price* : 135.00 USD



Main

Accessory / separate part designation	Redundant output sub-base
Accessory / separate part destination	PLC
Accessory / separate part category	Connection accessories
Accessory / separate part type	Splitter sub-base
Range of product	Advantys Telefast ABE7
Sub-base type	Redundant output sub-base
Number of channels	16
Quantity per set	Set of 1

Complementary

Channel splitting	2 x 16
Product weight	0.17 lb(US) (0.075 kg)

Ordering and shipping details

Category	22375 - INTERFACE MODULE(ABA,R,S)
Discount Schedule	CP2
GTIN	003389110864731
Nbr. of units in pkg.	1
Package weight(Lbs)	0.16
Returnability	N
Country of origin	LV

Offer Sustainability

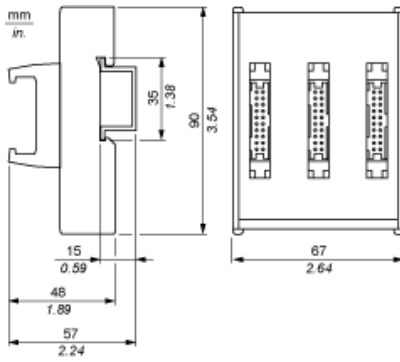
RoHS (date code: YYWW)	Compliant - since 0841 - Schneider Electric declaration of conformity Schneider Electric declaration of conformity
REACH	Reference not containing SVHC above the threshold Reference not containing SVHC above the threshold
California proposition 65	WARNING: This product can expose you to chemicals including:

----- Substance 1	Lead and lead compounds, which is known to the State of California to cause cancer and birth defects or other reproductive harm.
----- More information	For more information go to www.p65warnings.ca.gov

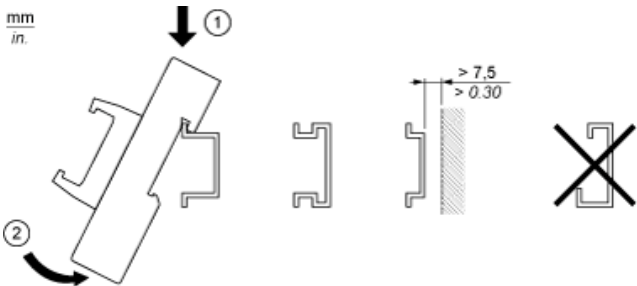
Contractual warranty

Warranty period	18 months
-----------------	-----------

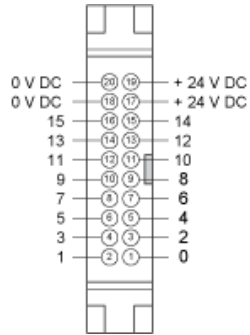
Dimensions



Mounting



HE10 16 Channels



Wiring Diagram

