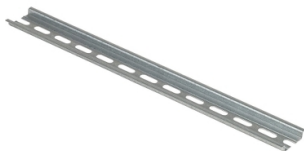


Product data sheet

Specifications

SQUARE D



Terminal Block Mounting Track - 35mm DIN Rail -No Slotted Holes 11 inches long

9080MH211

! Discontinued

Main

Range	9080G
Product	DIN rail
Quantity Per Set	Set of 10

Complementary

Material	Galvanised steel
Height	0.3 in (7.62 mm)
Width	1.38 in (35.05 mm)
Length	11 in (279.40 mm)

Ordering and shipping details

Category	21716-9080 M - DIN RAIL & END CLAMP
Discount Schedule	CP5
Returnability	No
Country Of Origin	MX

Packing Units

Unit Type Of Package 1	PCE
Number Of Units In Package 1	1
Package 1 Weight	3.20 oz (90.718 g)

Contractual warranty

Warranty	18 months
----------	-----------

Price is "List Price" and may be subject to a trade discount – check with your local distributor or retailer for actual price.

Sustainability

Green Premium™ label is Schneider Electric's commitment to delivering products with best-in-class environmental performance. Green Premium promises compliance with the latest regulations, transparency on environmental impacts, as well as circular and low-CO₂ products.

Guide to assessing product sustainability is a white paper that clarifies global eco-label standards and how to interpret environmental declarations.

[Learn more about Green Premium >](#)

[Guide to assess a product's sustainability >](#)

Eu Rohs Directive

Pro-active compliance (Product out of EU RoHS legal scope)

[EU RoHS Declaration](#)

California Proposition 65

WARNING: This product can expose you to chemicals including: Lead and lead compounds, which is known to the State of California to cause cancer and birth defects or other reproductive harm. For more information go to www.p65warnings.ca.gov