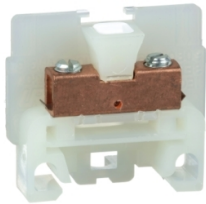


# Product data sheet

Specifications

SQUARE D



Terminal block, Linergy, box connector, natural colored block, 40A, 600 V

9080GK6

Product availability: Stock - Normally stocked in distribution facility

Price\*: 2.40 USD

## Main

Range Of Product	9080G
Product Type	Terminal block
Localisation On Device	Standard
Color	Natural
Quantity	Set of 50

## Complementary

Voltage Rating	600 V AC/DC
Current Rating	40 A CSA 70 A UL
Wire Size	AWG 22...AWG 10 copper
Mounting Type	9080GH track Panel
Certifications	CSA file 62144 class 6228 01 CE UL recognized E60616 CCN XCFR2
Electrical Connection	Copper box lugs
Material	Nylon: block
Ambient Air Temperature For Operation	-40...257 °F (-40...125 °C)
Electrical Connrection Tightening Torque	Lug copper 11...12 lbf.in (1.24...1.36 N.m) : AWG 22...AWG 10 copper)
Height	1.39 in (35.31 mm)
Width	1.4 in (35.56 mm)
Depth	0.35 in (8.89 mm)
Density	35 per foot
Compatible End Barrier	GK6B

## Ordering and shipping details

Category	US10CP521702
Discount Schedule	0CP5
Gtin	785901000822
Returnability	Yes
Country Of Origin	MX

Price is "List Price" and may be subject to a trade discount – check with your local distributor or retailer for actual price.

Disclaimer: This documentation is not intended as a substitute for and is not to be used for determining suitability or reliability of these products for specific user applications

## Packing Units

Unit Type Of Package 1	PCE
Number Of Units In Package 1	1
Package 1 Height	1.30 in (3.3 cm)
Package 1 Width	0.71 in (1.8 cm)
Package 1 Length	1.42 in (3.6 cm)
Package 1 Weight	0.48 oz (13.6 g)
Unit Type Of Package 2	PAL
Number Of Units In Package 2	10000
Package 2 Height	40.00 in (101.6 cm)
Package 2 Width	36.00 in (91.44 cm)
Package 2 Length	48.00 in (121.92 cm)
Package 2 Weight	299.83 lb(US) (136.0 kg)

## Contractual warranty

Warranty	18 months
----------	-----------

## Sustainability

**Green Premium™ label** is Schneider Electric’s commitment to delivering products with best-in-class environmental performance. Green Premium promises compliance with the latest regulations, transparency on environmental impacts, as well as circular and low-CO<sub>2</sub> products.

**Guide to assessing product sustainability** is a white paper that clarifies global eco-label standards and how to interpret environmental declarations.

[Learn more about Green Premium >](#)

[Guide to assess a product’s sustainability >](#)

## Well-being performance

✓	Reach Free Of Svhc	
✓	Toxic Heavy Metal Free	
✓	Mercury Free	
✓	Rohs Exemption Information	Yes
✓	Pvc Free	
Reach Regulation		<a href="#">REACH Declaration</a>
Eu Rohs Directive		Compliant <a href="#">EU RoHS Declaration</a>
China Rohs Regulation		<a href="#">China RoHS declaration</a> Pro-active China RoHS declaration (out of China RoHS legal scope)
California Proposition 65		WARNING: This product can expose you to chemicals including: Lead and lead compounds, which is known to the State of California to cause cancer and birth defects or other reproductive harm. For more information go to <a href="#">www.P65Warnings.ca.gov</a>