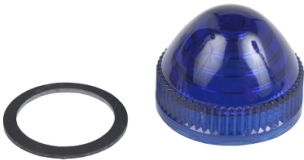


Product data sheet

Specifications

SQUARE D

Green Premium™



Harmony 9001K, Harmony 9001SK, lens, polycarbonate, domed, blue, grooved lens, 30 mm, for pilot light

9001L9

! Discontinued

! Discontinued on: Jun 30, 2023

Product availability: Non-Stock - Not normally stocked in distribution facility

Main

Range Of Product	Harmony 9001K Harmony 9001SK
Product Or Component Type	Lens
Accessory / Separate Part Type	Lens
Accessory / Separate Part Category	Spare parts
Accessory / Separate Part Destination	Pilot light

Complementary

Shape	Standard
Lens Type	Domed
Mounting Diameter	1.18 in (30 mm)
Cap/Operator Or Lens Colour	Blue
Net Weight	0.01 lb(US) (0.005 kg)

Ordering and shipping details

Category	US10CS121433
Discount Schedule	0CS1
Gtin	785901741138
Returnability	No
Country Of Origin	MX

Packing Units

Unit Type Of Package 1	PCE
Number Of Units In Package 1	1
Package 1 Height	0.80 in (2.032 cm)
Package 1 Width	1.00 in (2.54 cm)
Package 1 Length	1.00 in (2.54 cm)
Package 1 Weight	0.16 oz (4.536 g)

Contractual warranty

Price is "List Price" and may be subject to a trade discount – check with your local distributor or retailer for actual price.

Disclaimer: This documentation is not intended as a substitute for and is not to be used for determining suitability or reliability of these products for specific user applications

Warranty

18 months

Sustainability



Green Premium™ label is Schneider Electric’s commitment to delivering products with best-in-class environmental performance. Green Premium promises compliance with the latest regulations, transparency on environmental impacts, as well as circular and low-CO₂ products.

Guide to assessing product sustainability is a white paper that clarifies global eco-label standards and how to interpret environmental declarations.

[Learn more about Green Premium >](#)

[Guide to assess a product’s sustainability >](#)



Transparency RoHS/REACH

Well-being performance

 Mercury Free

 RoHS Exemption Information [Yes](#)

Certifications & Standards

Reach Regulation	REACH Declaration
Eu Rohs Directive	Pro-active compliance (Product out of EU RoHS legal scope)
China Rohs Regulation	China RoHS declaration
Environmental Disclosure	Product Environmental Profile
Weee	The product must be disposed on European Union markets following specific waste collection and never end up in rubbish bins.
Circularity Profile	No need of specific recycling operations
California Proposition 65	WARNING: This product can expose you to chemicals including: Nickel compounds, which is known to the State of California to cause cancer, and Di-isodecyl phthalate (DIDP), which is known to the State of California to cause birth defects or other reproductive harm. For more information go to www.P65Warnings.ca.gov