

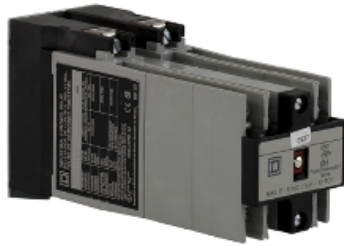
8501XO1000V01

Control Relay with 24VAC-60Hz Coil with 10 NO Contacts



Price* : 336.00 USD

8501XO1000V01 has not been replaced. Please contact your customer care center for more information.



⚠ Discontinued

Main

Range	8501X
Relay Type	Control
Product	Relay
Current Rating	10 A AC 5 A DC

Complementary

Coil Voltage	24 V AC 60 Hz
Control circuit voltage limits	0.85...1.1 U _c operational AC 60 Hz
Rated breaking capacity	6 A at: 120 V AC for inductive load control circuit per UL 508 3 A at: 240 V AC for inductive load control circuit per UL 508 1.5 A at: 480 V AC for inductive load control circuit per UL 508 1.2 A at: 600 V AC for inductive load control circuit per UL 508 10 A at: ≤ 600 V AC for resistive load control circuit per UL 508 1.1 A at: 125 V DC for inductive load control circuit per UL 508 0.55 A at: 250 V DC for inductive load control circuit per UL 508 0.2 A at: 301...600 V DC for inductive load control circuit per UL 508 4 A at: 125 V DC for resistive load control circuit per UL 508 0.8 A at: 250 V DC for resistive load control circuit per UL 508
[I _{cm}] rated short-circuit making capacity	60 A at: 120 V AC for inductive load control circuit per UL 508 30 A at: 240 V AC for inductive load control circuit per UL 508 15 A at: 480 V AC for inductive load control circuit per UL 508 12 A at: 600 V AC for inductive load control circuit per UL 508 10 A at: ≤ 600 V AC for resistive load control circuit per UL 508 1.1 A at: 125 V DC for inductive load control circuit per UL 508 0.55 A at: 250 V DC for inductive load control circuit per UL 508 0.2 A at: 301...600 V DC for inductive load control circuit per UL 508 4 A at: 125 V DC for inductive load control circuit per UL 508 0.8 A at: 250 V DC for resistive load control circuit per UL 508
Inrush power in VA	148 VA 60 Hz
Hold-in power consumption in VA	23 VA 60 Hz
Operating time	15 ms pick-up 16 ms drop-out

Contact Configuration	10 NO 10 standard contact cartridges
Electrical connection	Screw clamp terminals
AWG gauge	AWG 18...AWG 12 copper
Tightening torque	1.02...1.36 N.m control circuit screw terminals
Mounting Type	Panel
Height	3.5 in
Width	2.23 in
Depth	6.36 in

Environment

Operating Temperature	-40...160 °F
Certifications	UL listed file E78403 CCN NKCR CSA LR60905 class 3211 03

Ordering and shipping details

Category	21158 - 8501 XO (AC)
Discount Schedule	CP2
GTIN	00785901340638
Nbr. of units in pkg.	1
Package weight(Lbs)	3
Returnability	N
Country of origin	MX

Offer Sustainability

Sustainable offer status	Green Premium product
RoHS (date code: YYWW)	Compliant - since 1332 - Schneider Electric declaration of conformity Schneider Electric declaration of conformity
REACH	Reference not containing SVHC above the threshold Reference not containing SVHC above the threshold
Product environmental profile	Available
Product end of life instructions	Available
California proposition 65	WARNING: This product can expose you to chemicals including:
----- Substance 1	Lead and lead compounds, which is known to the State of California to cause cancer and birth defects or other reproductive harm.
----- More information	For more information go to www.p65warnings.ca.gov

Contractual warranty

Warranty period	18 months
-----------------	-----------