

170ADM35015

discrete I/O module Modicon Momentum - 16 I/O
solid state

Product availability : Non-Stock - Not normally stocked in distribution facility



Price* : 701.00 USD



Main

Range of product	Modicon Momentum automation platform
Product or component type	Discrete solid state I/O base DC
Group of channels	1 group of 16 inputs 2 groups of 8 outputs
Discrete input number	16 IEC 1131-2 Type 1
Discrete input logic	Negative
Discrete input voltage	24 V DC
Discrete output number	16
Discrete output type	Solid state switch
Discrete output voltage	<= 30 V DC 24 V DC
Discrete output logic	Negative
Protective treatment	TC

Complementary

[Us] rated supply voltage	24 V DC
Input voltage limits	- 3...30 V
Voltage state 0 guaranteed	4...30 V
Voltage state 1 guaranteed	-3...5 V
Current state 0 guaranteed	<= 1.2 mA
Current state 1 guaranteed	>= 2.5 mA
Input resistance	4 kOhm
Discrete output current	4 A per group 8 A per module 0.5 A per point
Leakage current	< 1 mA 24 V output circuit
Peak output current	5 A

Voltage drop	< 0.5 V 0.5 A at state 1 output circuit
Fault type	Overload on output
Response time	< 0.1 ms from state 0 to state 1 on output < 0.1 ms from state 1 to state 0 on output 2.2 ms from state 0 to state 1 on input 3.3 ms from state 1 to state 0 on input
Isolation between channels and bus	500 V AC
Power dissipation	6 W <= 8 W
Marking	CE
Terminals description PLC n°1	TB (14)IN_DIS#14 (16)IN_DIS#16 (2)IN_DIS#2 (11)IN_DIS#11 (4)IN_DIS#4 (3)IN_DIS#3 (10)IN_DIS#10 (9)IN_DIS#9 (1)IN_DIS#1 (7)IN_DIS#7 (15)IN_DIS#15 (6)IN_DIS#6 (8)IN_DIS#8 (L+)PW_POS (13)IN_DIS#13 (5)IN_DIS#5 (12)IN_DIS#12 (M-)PW_NEG
Terminals description PLC n°2	(11)OUT_DIS#11 (5)OUT_DIS#5 (3)OUT_DIS#3 (16)OUT_DIS#16 (9)OUT_DIS#9 (12)OUT_DIS#12 (14)OUT_DIS#14 (10)OUT_DIS#10 (1L+)PW_POS TB_1 (8)OUT_DIS#8 (6)OUT_DIS#6 (2L+)PW_POS (4)OUT_DIS#4 (15)OUT_DIS#15 (1)OUT_DIS#1 (7)OUT_DIS#7 (13)OUT_DIS#13 (2)OUT_DIS#2
Current consumption	250 mA 24 V DC
Depth	1.87 in (47.5 mm)
Height	5.57 in (141.5 mm)
Width	4.92 in (125 mm)
Product weight	0.44 lb(US) (0.2 kg)

Environment

Product certifications	UL CSA
Resistance to electrostatic discharge	4 kV contact IEC 801-2 8 kV on air IEC 801-2
Resistance to electromagnetic fields	9.14 V/yd (10 V/m) 80...1000 MHz IEC 801-3
Ambient air temperature for operation	32...140 °F (0...60 °C)
Ambient air temperature for storage	-40...185 °F (-40...85 °C)
Relative humidity	95 % without condensation
Operating altitude	<= 16404.2 ft (5000 m)

Ordering and shipping details

Category	18206 - MOMENTUM PROCESSORS,I/O BASES,CONN.
Discount Schedule	PC31
GTIN	00785901396390
Nbr. of units in pkg.	1
Package weight(Lbs)	0.8399999999999997
Returnability	N
Country of origin	ID

Offer Sustainability

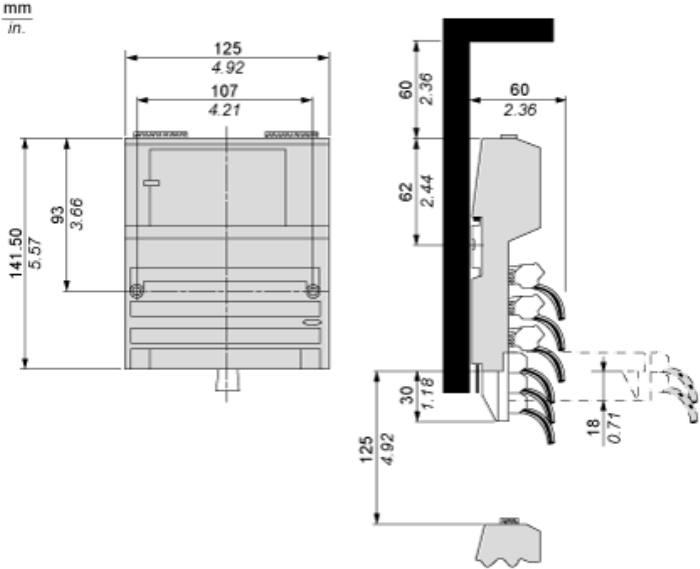
Sustainable offer status	Green Premium product
RoHS (date code: YYWW)	Compliant - since 1350 - Schneider Electric declaration of conformity Schneider Electric declaration of conformity
REACH	Reference not containing SVHC above the threshold Reference not containing SVHC above the threshold
Product environmental profile	Available
Product end of life instructions	Available
California proposition 65	WARNING: This product can expose you to chemicals including: Lead and lead compounds, which is known to the State of California to cause cancer and birth defects or other reproductive harm. For more information go to www.P65Warnings.ca.gov
----- Substance 1	Lead and lead compounds, which is known to the State of California to cause cancer and birth defects or other reproductive harm.
----- More information	For more information go to www.p65warnings.ca.gov

Contractual warranty

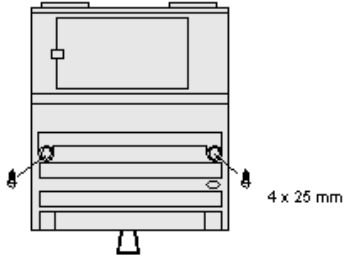
Warranty period	18 months
-----------------	-----------

Standard Adapter on a Typical Base

Dimensions

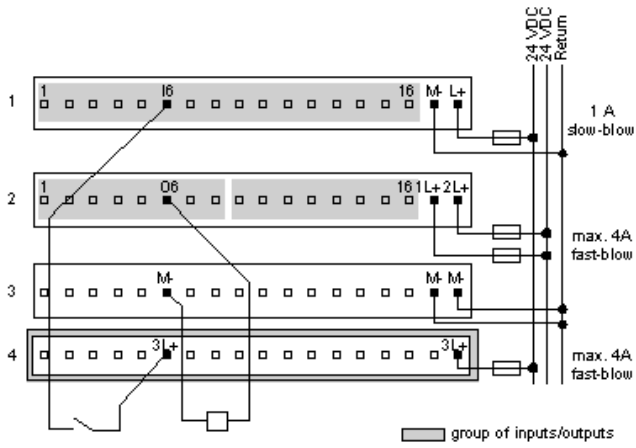


Mounting on a Wall

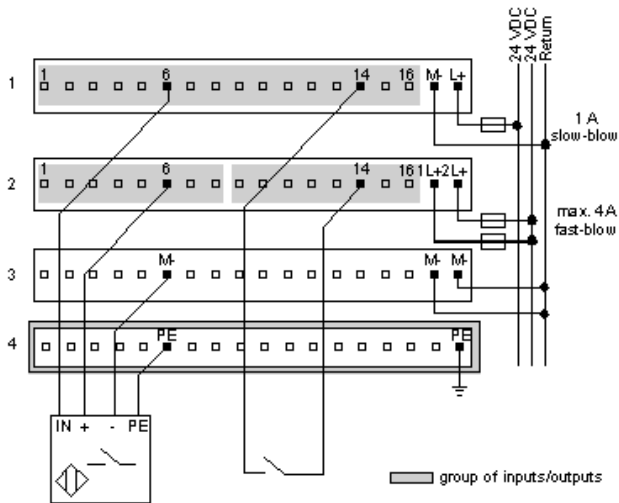


External Wiring Diagrams

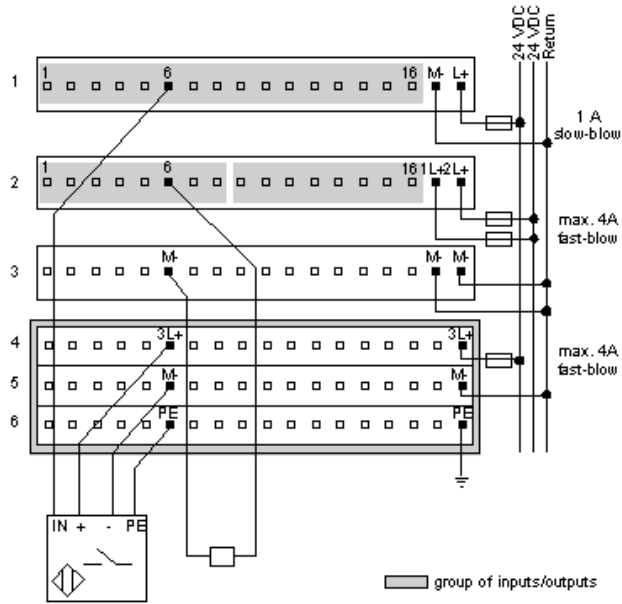
2-Wire Devices



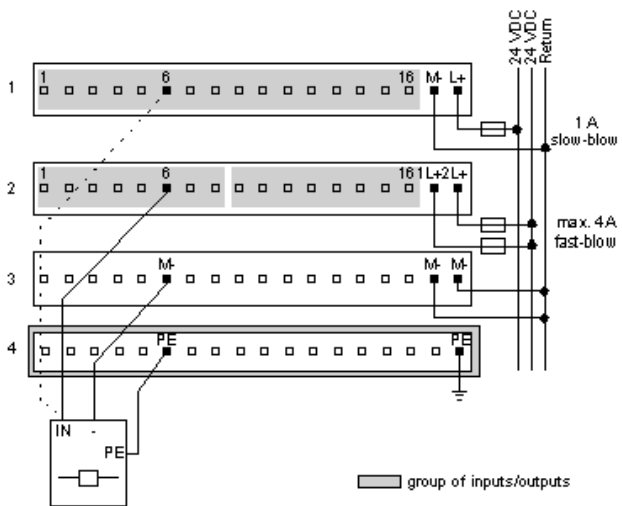
Sensor Activated by Output



Four-Wire Sensor with a Two-Wire Actuator



Broken Wire Detection



Internal Pin Connections

Rows 1 through 3 show the internal connections between terminals on the I/O base. Rows 4 through 6 show the internal connections on the optional busbar.

